

OPzS Series Battery

SPACEFLIGHT OPzS Series battery is Tubular Flooded battery, designed with an innovative tubular plates which provide greater capacity and enhanced cycle life. The battery has been specifically designed for longer life, greater reliability and strong resilience to high temperature making them ideal for critical power applications and energy storage.

Applications

- Solar and wind power systems
- Uninterruptible power supplies
- Communication systems
- Telecommunication systems
- Emergency Power Systems

General Features

- 20 years designed floating life(25°C)
- Non-spillable construction
- Sealed and maintenance-free
- Advanced tubular positive plates
- Excellent recovery from deep discharge
- Longer Life and low self-discharge

Standards

- Compliance with IEC, BS, JIS and EU standards.
- UL, CE Certified
- ISO45001, ISO9001 and ISO14001 certified production facilities

Specifications

Rated Voltage	2V	
Nominal Capacity	2500Ah	(C ₁₀ , 1.8V)
Approx Weight	Without Electrolyte 134.0kg/With Electrolyte 193.0kg	
Terminal	F28	

Rated Capacity(25°C)	3000 Ah	(120hr, 25.0A, 1.85V)
	2904 Ah	(48hr, 60.5A, 1.85V)
	2500 Ah	(10hr, 250.0A, 1.80V)
	2190 Ah	(5hr, 438.0A, 1.80V)

Max. Discharge/Charge Current 12500A(5s)/625A

Max. Short Circuit Current 16000A

Internal Resistance(25°C) Approx 0.25mΩ

Operating Temp. Range	Discharge	-20~60°C(-4~140°F)
	Charge	-10~50°C(14~122°F)
	Storage	-20~60°C(-4~140°F)

Nominal operating temperature 25±5°C

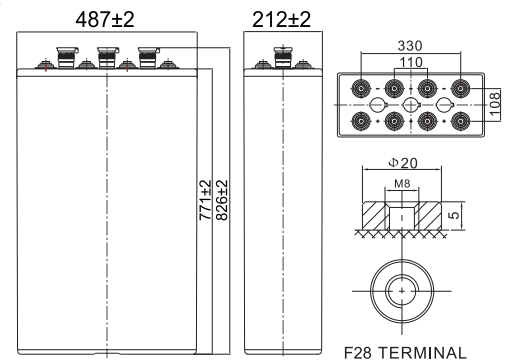
Charge Voltage @25°C(77°F)	Cycle Use	Initial Charging Current less than 625A. Voltage 2.4V~2.45V at 25°C(77°F)Temp. Coefficient -5mV/°C
	Standby Use	Initial Charging Current less than 625A. Voltage 2.23V~2.25V at 25°C(77°F)Temp. Coefficient -3mV/°C

Temperature effects on capacity	40°C (104°F)	103%
	25°C (77°F)	100%
	0°C (32°F)	86%
	-15°C (5°F)	65%

Self Discharge(25°C)	Capacity after 3 months storage	91%
	Capacity after 6 months storage	82%
	Capacity after 12 months storage	65%



Dimensions unit:mm



Length	487±2mm (19.2 inches)
Width	212±2mm (8.35 inches)
Container Height	771±2mm (30.4 inches)
Total Height	826±2mm (32.5 inches)

Battery Construction

Component	Positive plate	Negative plate	Container	Safety valve	Terminal	Separator	Electrolyte
Raw material	Lead dioxide	Lead	ABS(UL94-HB) or FR(UL94-V0)	Rubber	Copper	PVC	Sulfuric acid

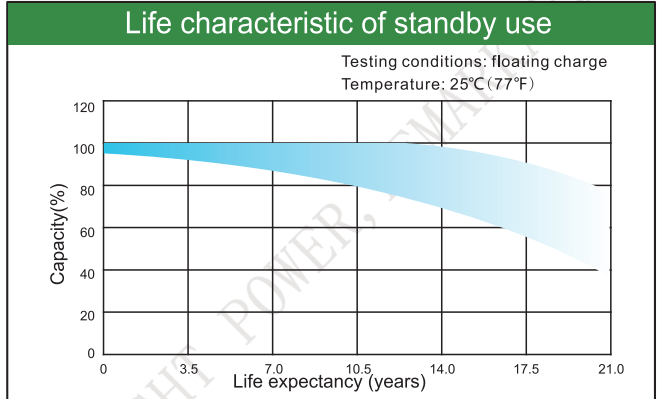
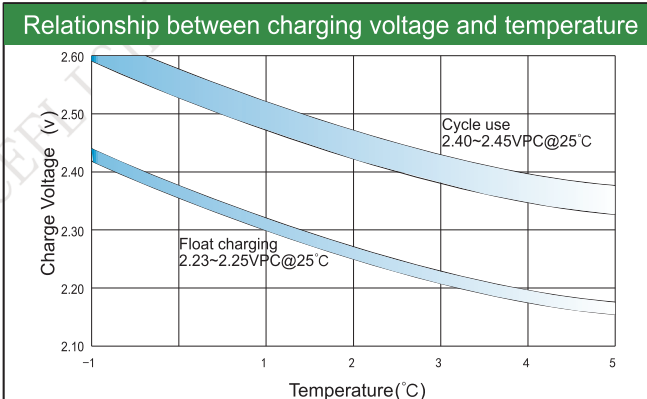
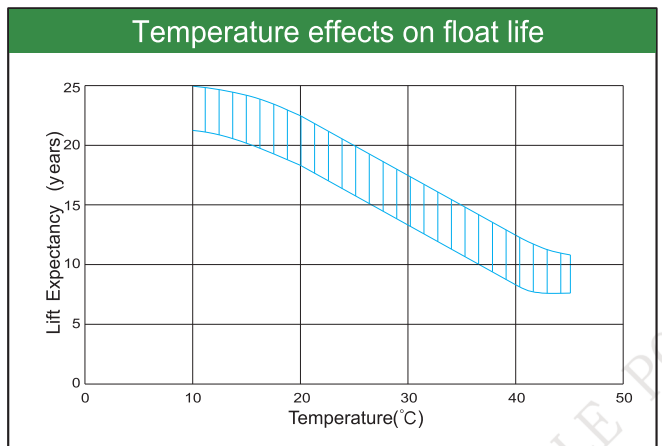
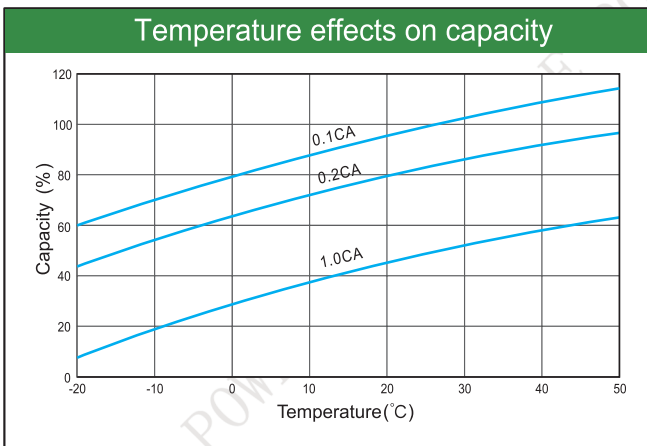
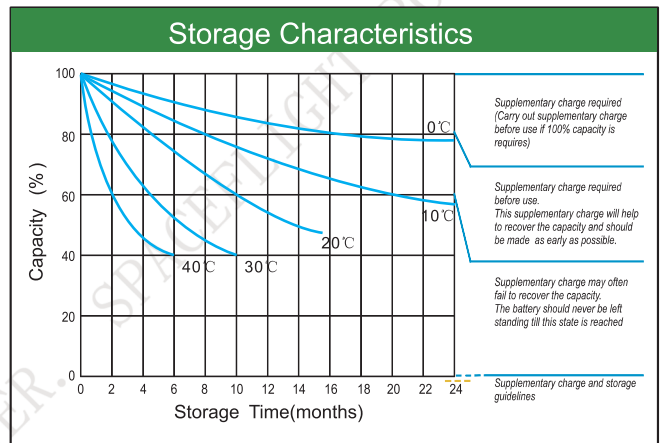
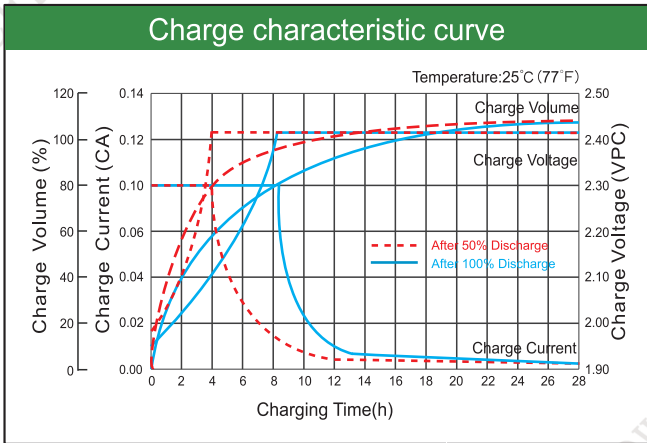
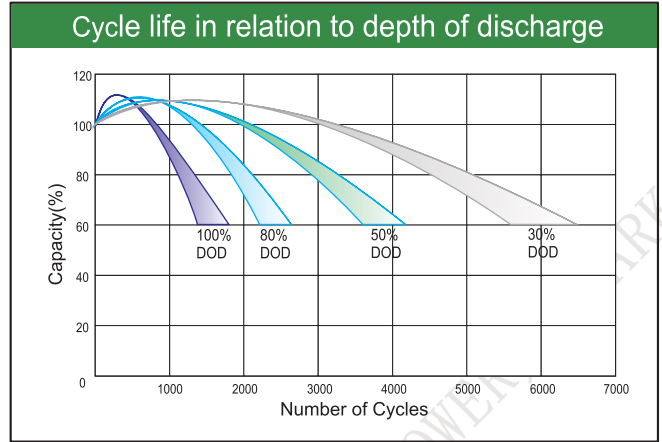
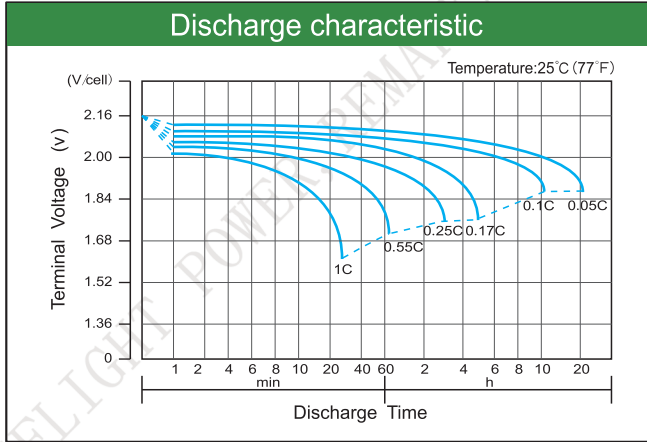
Constant Current Discharge (Amperes) at 25°C(77°F)

E.V/Time	1h	3h	5h	8h	10h	20h	24h	48h	120h
1.70V	1350	645	453	295	253	136	119	-----	-----
1.75V	1310	640	450	293	253	136	118	-----	-----
1.80V	1280	620	438	283	250	135	118	60.5	-----
1.85V	1200	580	413	265	238	129	112	60.5	25.0

Constant Power Discharge (Watts/cell) at 25°C(77°F)

E.V/Time	1h	3h	5h	8h	10h	20h	24h	48h	120h
1.70V	2550	1260	895	585	505	273	239	-----	-----
1.75V	2500	1250	890	580	500	273	238	-----	-----
1.80V	2430	1210	860	565	498	270	236	122	-----
1.85V	2250	1130	800	525	463	250	225	122	51.0

Note: The above characteristics data are average values obtained Within three charge/discharge cycles not the minimum.



Factory address: Fukang Industrial Zone, Longnan, Ganzhou, Jiangxi Province, China.
 Shenzhen Office: RM208-210, Building D, Tongju industrial Park, No.4, Longping West Road, Longgang District, Shenzhen.
 TEL: +86-755-28288189 sales@sfbattery.com www.sfbattery.com