

OPzV Series Battery

SPACEFLIGHT OPzV Series battery is Tubular GEL battery, designed with an innovative tubular plates which provide greater capacity and enhanced cycle life. The battery has been specifically designed for longer life, greater reliability and strong resilience to high temperature making them ideal for critical power applications and energy storage.

Applications

- Solar and wind power systems
- Uninterruptible power supplies
- Communication systems
- Telecommunication systems
- Emergency Power Systems

General Features

- 20 years design life(25 °C)
- Non-spillable construction
- Sealed and maintenance-free
- Advanced tubular positive plates
- Excellent recovery from deep discharge
- Longer Life and low self-discharge

Standards

- Compliance with IEC, BS, JIS and EU standards.
- UL, CE Certified
- ISO45001,ISO9001 and ISO14001 certified production facilities

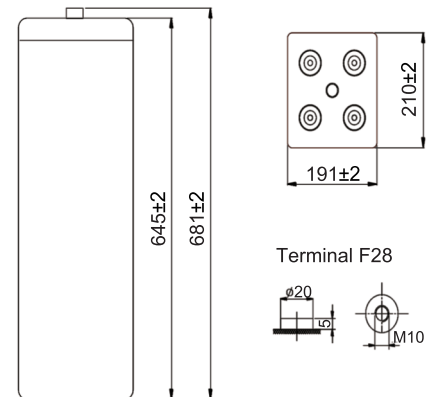
Specifications

Rated Voltage	2V	
Nominal Capacity	800Ah	(C ₁₀ , 1.80V)
Approx Weight	65.0kg±3%(143.3lbs)	
Terminal	F28	
Rated Capacity(25°C)	1020 Ah	(120hr,8.5A,1.85V)
	968 Ah	(100hr,9.68A,1.85V)
	800 Ah	(10hr,80A,1.80V)
	600 Ah	(3hr,200A,1.80V)
Max.Discharge/Charge Current	4000A(5s) /200A	
Max.Short Circuit Current	5200A	
Internal Resistance(25 °C)	Approx 0.45mΩ	
Operating Temp.Range	Discharge	-20~60 °C(-4~140 °F)
	Charge	-10~50 °C(14~122 °F)
	Storage	-20~60 °C(-4~140 °F)
Nominal operating temperature	25±5 °C	
Charge Voltage @25°C(77 °F)	Cycle Use	Initial Charging Current less than 200A. Voltage 2.4V~2.45V at 25°C(77°F)Temp. Coefficient -5mV/°C
	Standby Use	Initial Charging Current less than 200A. Voltage 2.25V~2.27V at 25°C(77°F)Temp. Coefficient -3mV/°C
Temperature effects on capacity	40 °C (104 °F)	103%
	25 °C (77 °F)	100%
	0 °C (32 °F)	86%
	-15 °C (5 °F)	65%
Self Discharge(25 °C)	Capacity after 3 months storage	91%
	Capacity after 6 months storage	82%
	Capacity after 12 months storage	65%



Dimensions

unit:mm



Length	210±2mm (8.27 inches)
Width	191±2mm (7.52 inches)
Container Height	645±2mm (25.4 inches)
Total Height	681±2mm (26.8 inches)

Battery Construction

Component	Positive plate	Negative plate	Container	Safety valve	Terminal	Separator	Electrolyte
Raw material	Lead dioxide	Lead	ABS(UL94-HB) or FR(UL94-V0)	Rubber	Copper	PVC-SiO ₂	Fumed Silicon

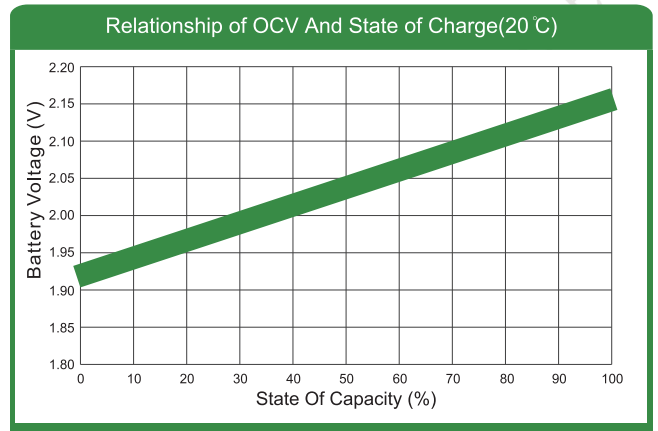
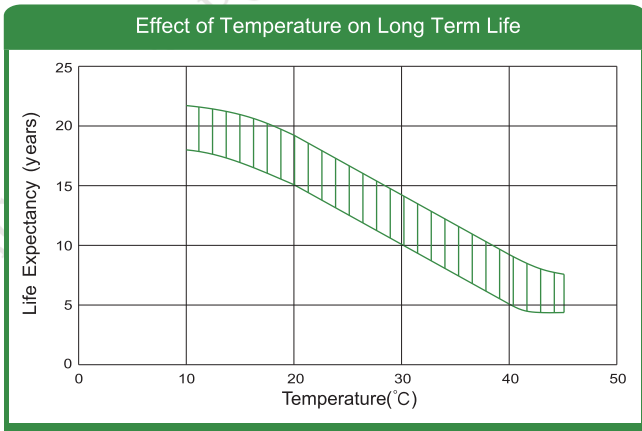
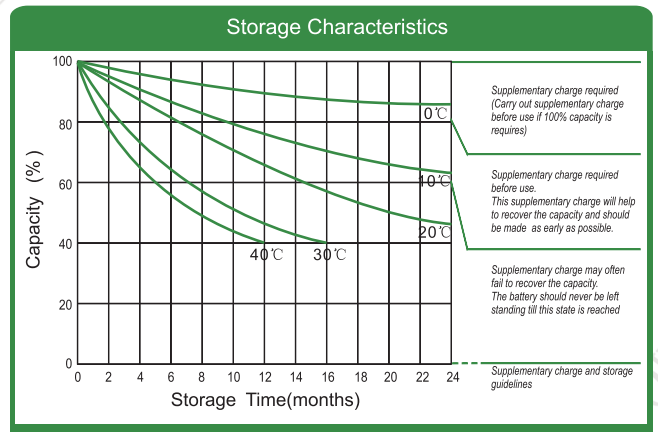
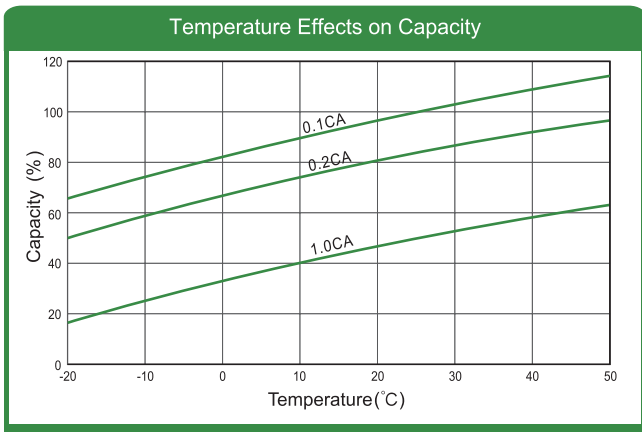
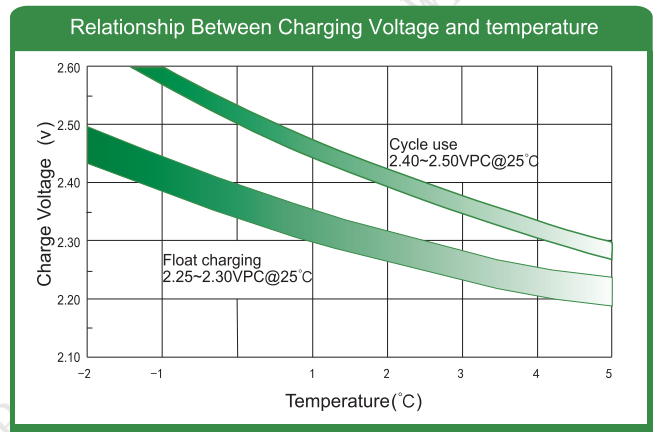
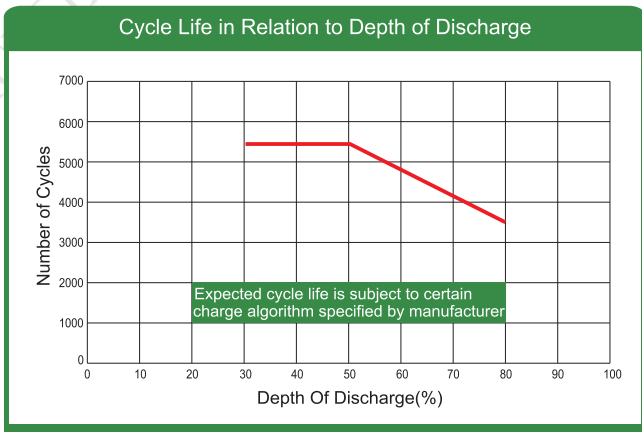
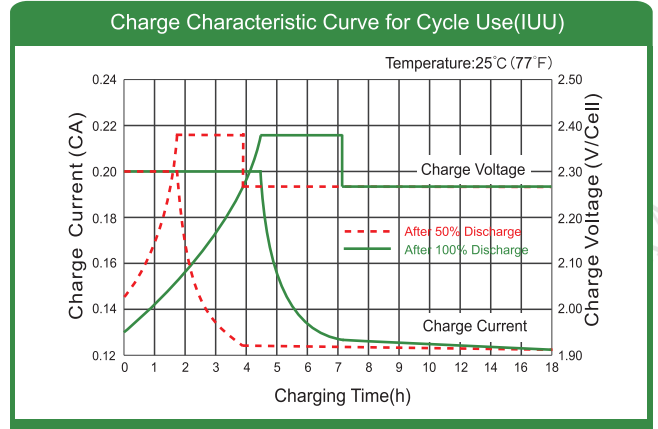
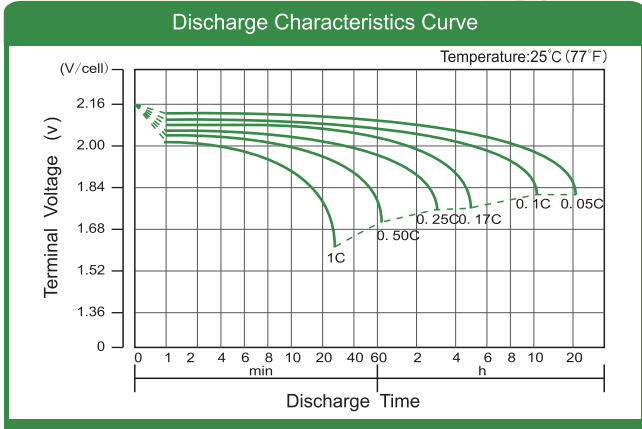
Constant Current Discharge (Amperes) at 25°C(77°F)

E.V/Time	30min	1h	3h	5h	10h	20h	48h	100h	120h
1.65V	724	454	219	143	83.0	43.0	/	/	/
1.70V	689	435	213	139	82.0	43.0	19.6	/	/
1.75V	652	415	207	135	82.0	42.7	19.5	/	/
1.80V	613	393	200	131	80.0	42.4	19.4	/	/
1.85V	568	367	191	125	77.0	40.3	19.0	9.68	8.50

Constant Power Discharge (Watts/cell) at 25°C(77°F)

E.V/Time	30min	1h	3h	5h	10h	20h	48h	100h	120h
1.65V	1411	904	411	290	162	86.4	/	/	/
1.70V	1331	869	399	283	160	85.6	39.6	/	/
1.75V	1246	831	373	275	156	85.6	39.4	/	/
1.80V	1158	791	359	266	153	84.8	39.1	/	/
1.85V	1058	746	342	255	145	80.6	38.3	19.5	16.9

Note: The above characteristics data are average values obtained Within three charge/discharge cycles not the minimum.



Factory address: Fukang Industrial Zone, Longnan, Ganzhou, Jiangxi Province, China.
 Shenzhen Office: RM208-210, Building D, Tongju industrial Park, No.4, Longping West Road, Longgang District, Shenzhen.
 TEL: +86-755-28288189 sales@sfbattery.com www.sfbattery.com