

### HTF Series General Battery

HTF series battery is Front Terminal Battery features integrated carrying handles and front access terminal connection which easily install and service in 19-inch and 23-inch battery cabinets, the batteries are based on AGM technology, an ideal backup for industrial, utility, and telecommunications applications.

#### Applications

- Uninterruptible power supplies
- Telecommunication systems
- Communication equipments
- Emergency Power Systems
- Security systems
- Solar/Wind systems

#### General Features

- 12 years designed floating life(25°C)
- Non-spillable construction
- Sealed and maintenance-free
- High reliability and stability
- High purity raw material: long life and low self-discharge

#### Standards

- Compliance with IEC, BS, JIS and EU standards
- UL, CE Certified
- ISO45001,ISO9001 and ISO14001 certified production facilities

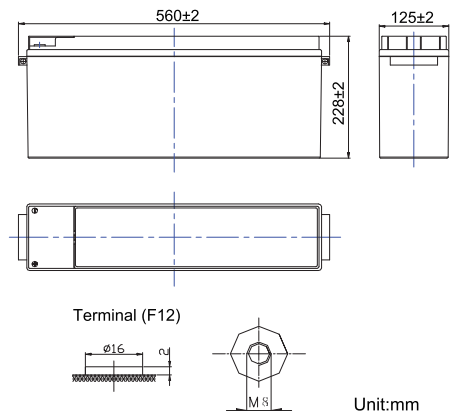
#### Specifications

Rated Voltage	12V	
Nominal Capacity	100Ah	(C <sub>10</sub> , 10.8V)
Approx Weight	34.5kg±3%(76.1lbs)	
Terminal	F12	
Rated Capacity(25°C)	116 Ah	(20hr,5.8A,10.5V)
	100 Ah	(10hr,10A,10.8V)
	96 Ah	(5hr,19.2A,10.5V)
	72 Ah	(1hr,72A,9.6V)
Max.Discharge Current	1000A(5s)	
Max.Charge Current	25A	
Internal Resistance(25°C)	Approx 7mΩ	
Operating Temp.Range	Discharge	-20~60°C(-4~140°F)
	Charge	-10~50°C(14~122°F)
	Storage	-20~60°C(-4~140°F)
Nominal operating temperature	25±5°C	
Charge Voltage @25°C(77°F)	Cycle Use	Initial Charging Current less than 25A. Voltage 14.4V~15.0V at 25°C(77°F)Temp. Coefficient -30mV/°C
	Standby Use	Initial Charging Current less than 25A. Voltage 13.5V~13.8V at 25°C(77°F)Temp. Coefficient -20mV/°C
Temperature effects on capacity	40°C (104°F)	103%
	25°C (77°F)	100%
	0°C (32°F)	86%
	-15°C (5°F)	65%
Self Discharge(25°C)	Capacity after 3 months storage	91%
	Capacity after 6 months storage	82%
	Capacity after 12 months storage	65%



#### Dimensions

unit:mm



Length	560±2mm (22.0 inches)
Width	125±2mm (4.92 inches)
Container Height	228±2mm (8.98 inches)
Total Height	228±2mm (8.98 inches)

#### Battery Construction

Component	Positive plate	Negative plate	Container	Safety valve	Terminal	Separator	Electrolyte
Raw material	Lead dioxide	Lead	ABS(UL94-HB) or FR(UL94-V0)	Rubber	Copper	Fiberglass	Sulfuric acid

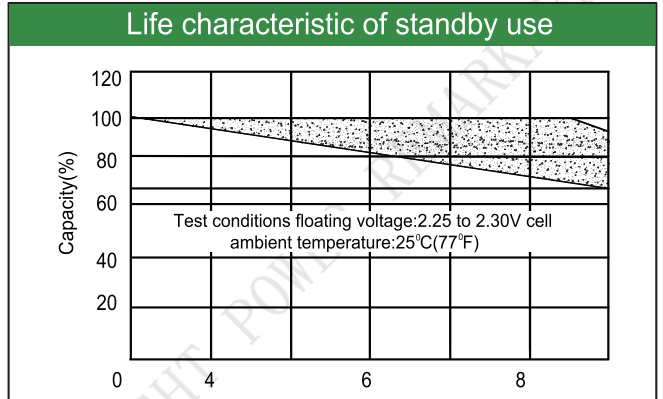
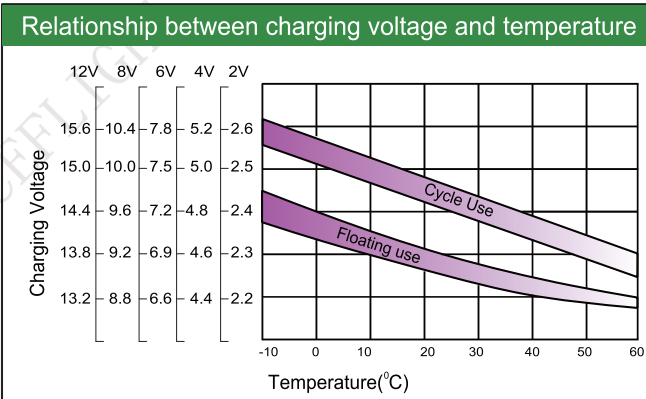
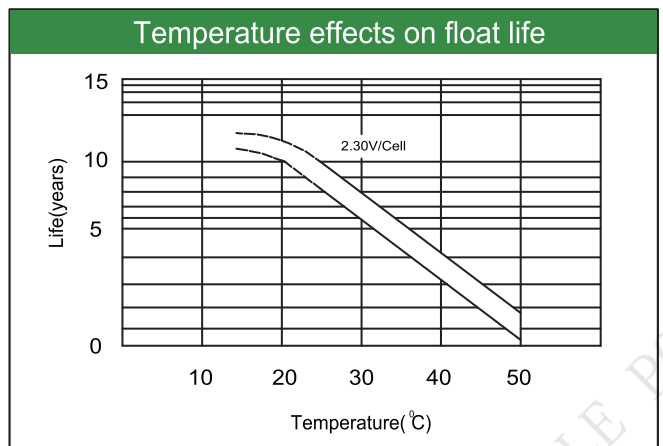
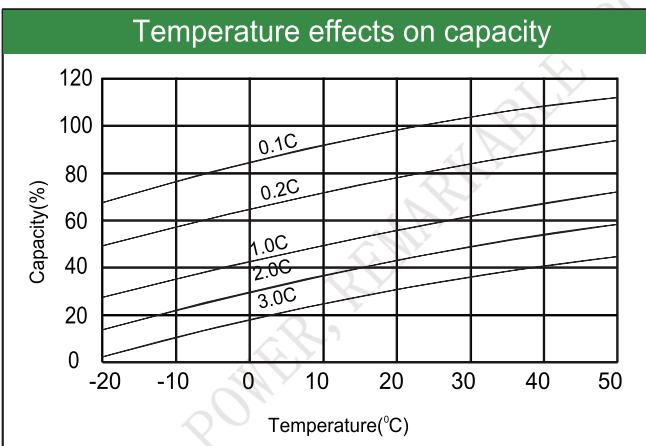
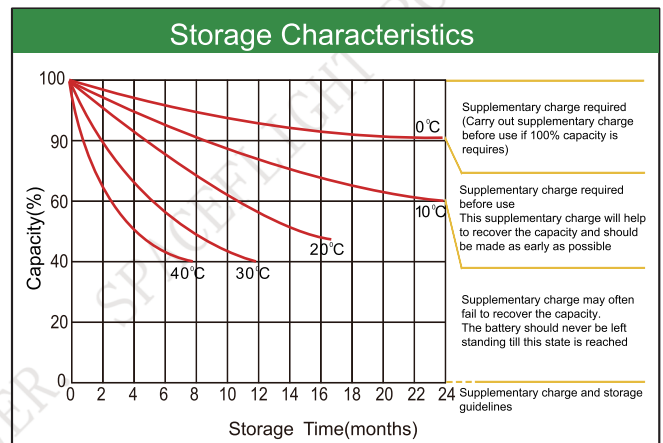
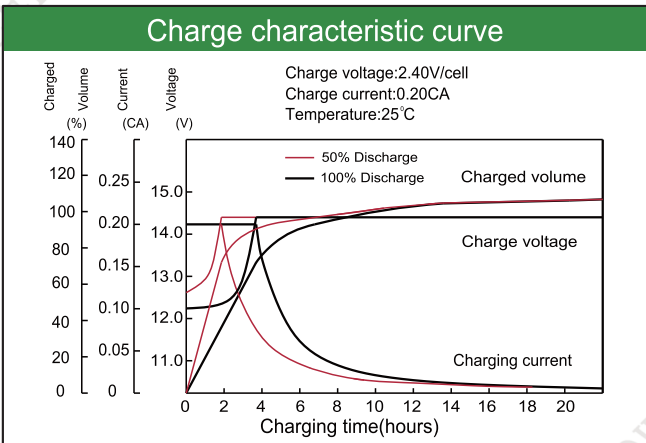
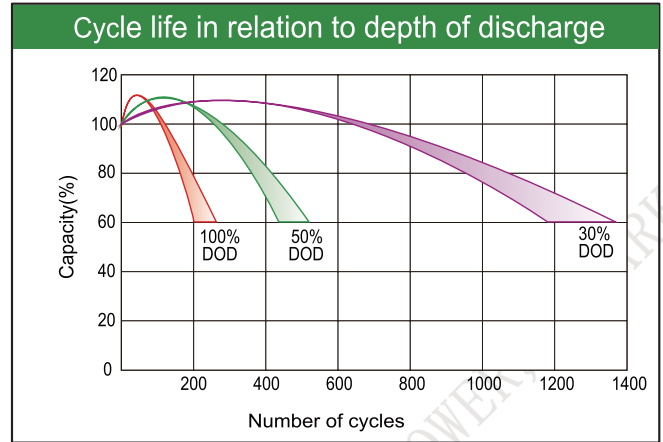
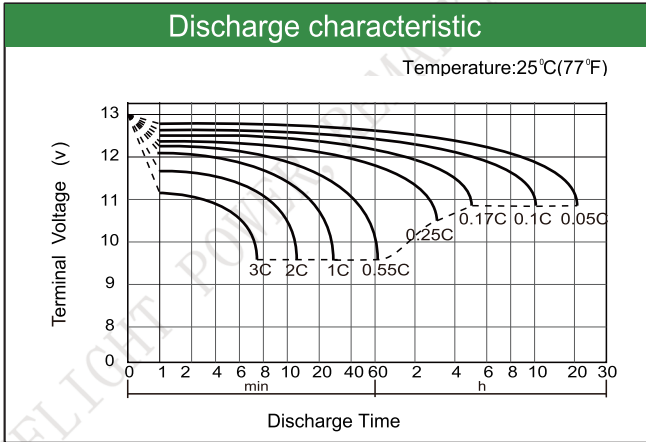
#### Constant Current Discharge (Amperes) at 25°C(77°F)

E.V/Time	10min	15min	30min	45min	1h	3h	5h	10h	20h
1.60V	295	211	129	93.5	72.5	30.0	20.5	10.5	5.95
1.65V	280	196	124	89.3	71.0	29.5	20.1	10.4	5.90
1.70V	260	186	119	86.5	69.6	29.0	19.8	10.3	5.85
1.75V	250	175	114	84.5	67.1	28.5	19.5	10.2	5.80
1.80V	235	168	108	82.5	65.5	27.8	18.9	10.0	5.70

#### Constant Power Discharge (Watts/cell) at 25°C(77°F)

E.V/Time	10min	15min	30min	45min	1h	3h	5h	10h	20h
1.60V	498	358	220	160	125	52.1	36.4	20.1	11.51
1.65V	480	337	214	155	124	52.0	36.3	20.0	11.37
1.70V	461	325	209	152	123	52.0	36.2	19.8	11.29
1.75V	443	312	204	152	121	52.0	36.2	19.7	11.25
1.80V	427	307	198	152	121	51.9	36.1	19.6	11.21

Note: The above characteristics data are average values obtained Within three charge/discharge cycles not the minimum.



Factory address: Fukang Industrial Zone, Longnan, Ganzhou, Jiangxi Province, China.  
 Shenzhen Office: RM208-210, Building D, Tongju industrial Park, No.4, Longping West Road, Longgang District, Shenzhen.  
 TEL: +86-755-28288189      [sales@sfbattery.com](mailto:sales@sfbattery.com)      [www.sfbattery.com](http://www.sfbattery.com)