

HTF Series General Battery

HTF series battery is Front Terminal Battery features integrated carrying handles and front access terminal connection which easily install and service in 19-inch and 23-inch battery cabinets, the batteries are based on AGM technology, an ideal backup for industrial, utility, and telecommunications applications.

Applications

Uninterruptible power supplies
 Telecommunication systems
 Communication equipments
 Emergency Power Systems
 Security systems
 Solar/Wind systems

General Features

12 years designed floating life(25°C)
 Non-spillable construction
 Sealed and maintenance-free
 High reliability and stability
 High purity raw material: long life and low self-discharge

Standards

Compliance with IEC, BS, JIS and EU standards
 UL, CE Certified
 ISO45001,ISO9001 and ISO14001 certified production facilities

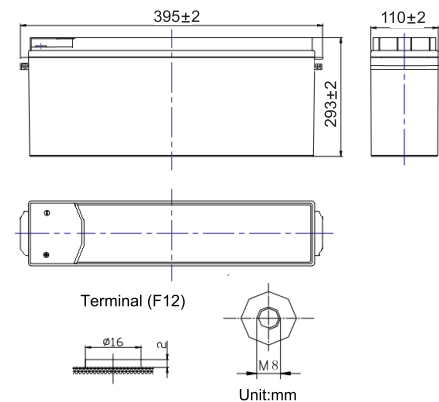
Specifications

Rated Voltage	12V	
Nominal Capacity	90Ah	(C ₁₀ , 10.8V)
Approx Weight	29.0kg±3%(63.93lbs)	
Terminal	F12	
Rated Capacity(25°C)	97.8 Ah	(20hr,4.89A,10.5V)
	90 Ah	(10hr,9.0A,10.8V)
	85 Ah	(5hr,16.4A,10.5V)
	62 Ah	(1hr,62A,9.6V)
Max.Discharge Current	900A(5s)	
Max.Charge Current	22.5A	
Internal Resistance(25°C)	Approx 6mΩ	
Operating Temp.Range	Discharge	-20~60°C(-4~140°F)
	Charge	-10~50°C(14~122°F)
	Storage	-20~60°C(-4~140°F)
Nominal operating temperature	25±5°C	
Charge Voltage @25°C(77°F)	Cycle Use	Initial Charging Current less than 22.5A. Voltage 14.4V~15.0V at 25°C(77°F)Temp. Coefficient -30mV/°C
	Standby Use	Initial Charging Current less than 22.5A. Voltage 13.5V~13.8V at 25°C(77°F)Temp. Coefficient -20mV/°C
Temperature effects on capacity	40°C (104°F)	103%
	25°C (77°F)	100%
	0°C (32°F)	86%
	-15°C (5°F)	65%
Self Discharge(25°C)	Capacity after 3 months storage	91%
	Capacity after 6 months storage	82%
	Capacity after 12 months storage	65%



Dimensions

unit:mm



Length	395±2mm(15.6inches)
Width	110±2mm(4.33inches)
Container Height	286±2mm(11.3inches)
Total Height	293±2mm(11.5inches)

Battery Construction

Component	Positive plate	Negative plate	Container	Safety valve	Terminal	Separator	Electrolyte
Raw material	Lead dioxide	Lead	ABS(UL94-HB) or FR(UL94-V0)	Rubber	Copper	Fiberglass	Sulfuric acid

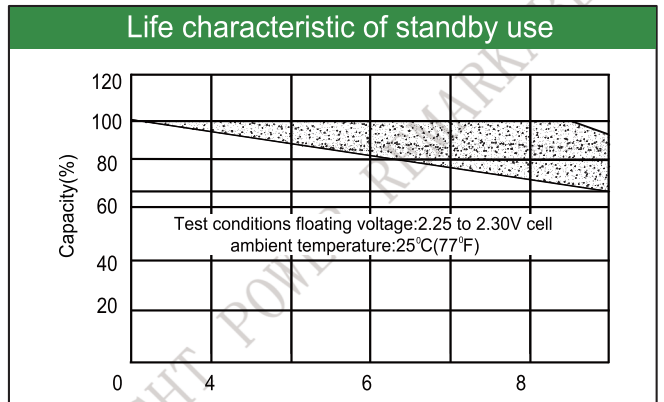
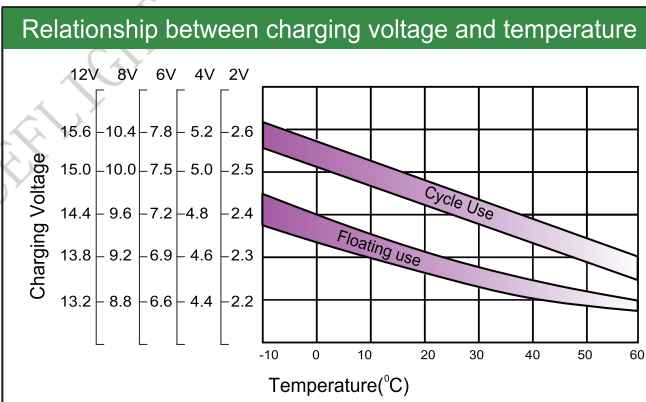
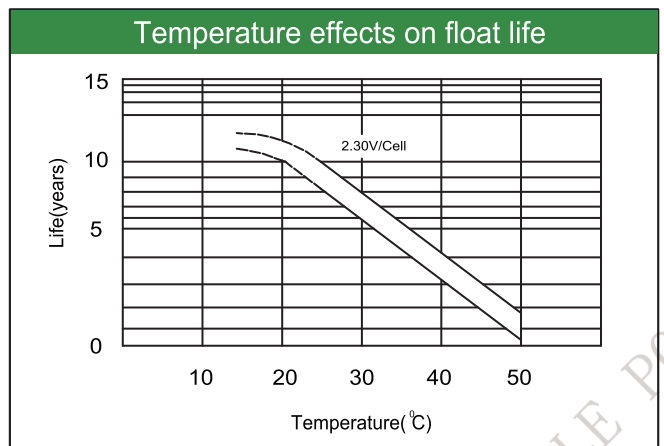
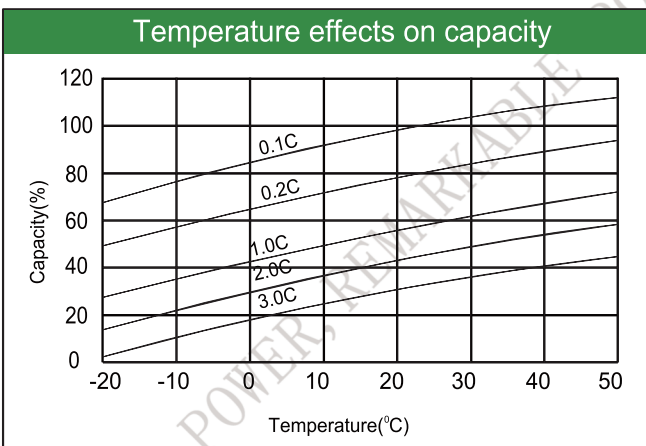
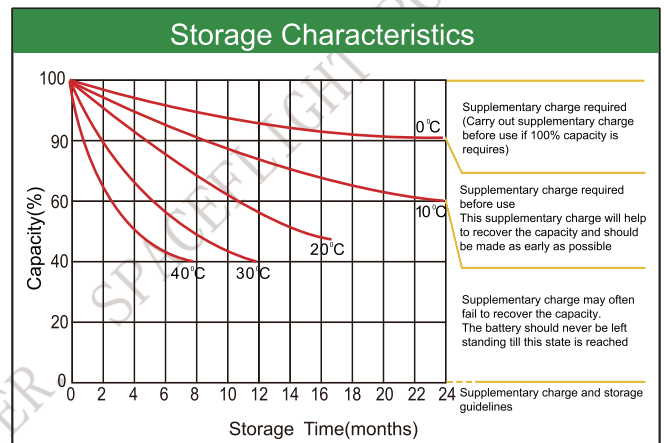
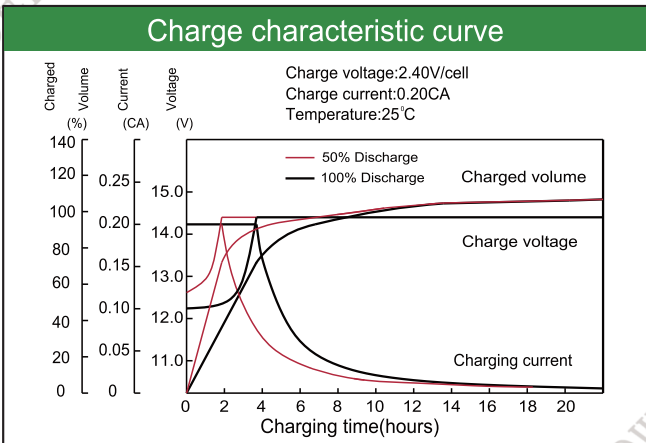
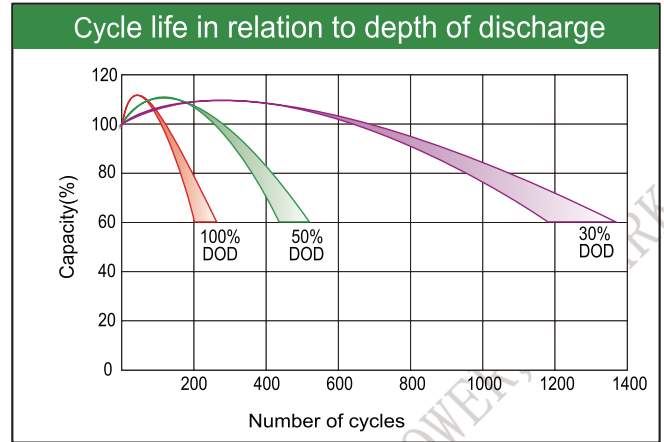
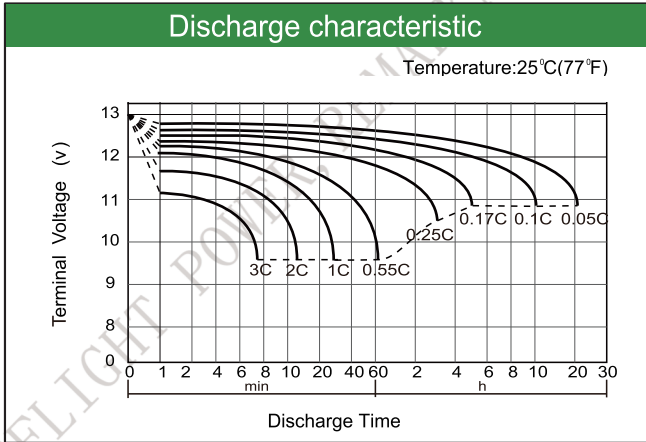
Constant Current Discharge (Amperes) at 25°C(77°F)

E.V/Time	10min	15min	30min	45min	1h	3h	5h	10h	20h
1.60V	199	164	105	78.2	62.0	25.3	17.0	9.74	4.95
1.65V	192	160	103	77.2	61.2	25.0	16.8	9.69	4.95
1.70V	184	153	100	75.5	60.1	24.6	16.6	9.61	4.89
1.75V	170	145	95.8	73.6	58.5	24.2	16.4	9.54	4.89
1.80V	155	133	92.5	70.8	57.0	23.9	16.2	9.0	4.84

Constant Power Discharge (Watts/cell) at 25°C(77°F)

E.V/Time	10min	15min	30min	45min	1h	3h	5h	10h	20h
1.60V	353	292	188	141	112	46.2	31.7	19.1	9.78
1.65V	340	285	184	139	111	45.6	31.3	19.0	9.58
1.70V	326	272	179	135	108	44.8	30.9	18.8	9.44
1.75V	301	258	171	132	106	44.2	30.5	18.7	9.41
1.80V	282	243	170	131	106	44.7	31.0	18.1	9.36

Note: The above characteristics data are average values obtained Within three charge/discharge cycles not the minimum.



Factory address: Fukang Industrial Zone, Longnan, Ganzhou, Jiangxi Province, China.
 Shenzhen Office: RM208-210, Building D, Tongju industrial Park, No.4, Longping West Road, Longgang District, Shenzhen.
 TEL: +86-755-28288189 sales@sfbattery.com www.sfbattery.com