

### HTH Series Battery

SPACEFLIGHT HTH series battery is High Rate battery based on advanced AGM technology, by using specially designed plates with more active materials which makes the battery can work under a heavy load discharge applications.

### Applications

- Uninterruptible power supplies
- Telecommunication systems
- Communication equipments
- Emergency Power Systems
- Security system

### General Features

- 5-8 years designed floating life(25 °C)
- Non-spillable construction
- Sealed and maintenance-free
- High reliability and stability
- High purity raw material: long life and low self-discharge

### Standards

- Compliance with IEC, BS, JIS and EU standards
- UL, CE Certified
- ISO45001,ISO9001 and ISO14001 certified production facilities

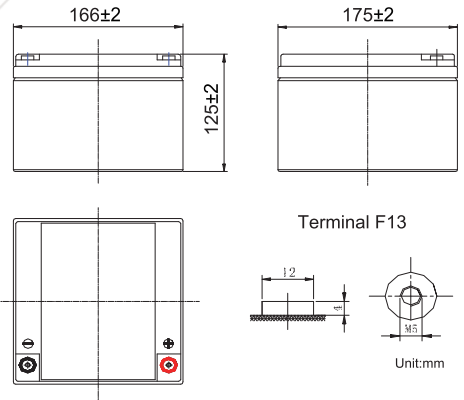
### Specifications

Rated Voltage	12V	
Nominal Capacity	100W/cell	(15min rate@1.67V)
Approx Weight	8.6kg±3%(19.0lbs)	
Terminal	F13	
Rated Capacity(25°C)	28 Ah	(20hr,1.4A,10.8V)
	26 Ah	(10hr,2.6A,10.8V)
	23.75 Ah	(5hr,4.75A,10.5V)
	19.1 Ah	(1hr,19.1A,9.6V)
Max.Discharge Current	420A(5s)	
Max.Charge Current	7.0A	
Internal Resistance(25°C)	Approx 9mΩ	
Operating Temp.Range	Discharge	-20~60°C(-4~140°F)
	Charge	-10~50°C(14~122°F)
	Storage	-20~60°C(-4~140°F)
Nominal operating temperature	25±5°C	
Charge Voltage @25°C(77°F)	Cycle Use	Initial Charging Current less than 7A. Voltage 14.4V~15.0V at 25°C(77°F)Temp. Coefficient -30mV/°C
	Standby Use	Initial Charging Current less than 7A. Voltage 13.5V~13.8V at 25°C(77°F)Temp. Coefficient -20mV/°C
Temperature effects on capacity	40°C (104°F)	103%
	25°C (77°F)	100%
	0°C (32°F)	86%
	-15°C (5°F)	65%
Self Discharge(25°C)	Capacity after 3 months storage	91%
	Capacity after 6 months storage	82%
	Capacity after 12 months storage	65%



### Dimensions

unit:mm



Length	166±2mm (6.54 inches)
Width	175±2mm (6.89 inches)
Container Height	125±2mm (4.92 inches)
Total Height	125±2mm (4.92 inches)

### Battery Construction

Component	Positive plate	Negative plate	Container	Safety valve	Terminal	Separator	Electrolyte
Raw material	Lead dioxide	Lead	ABS(UL94-HB) or FR(UL94-V0)	Rubber	Copper	Fiberglass	Sulfuric acid

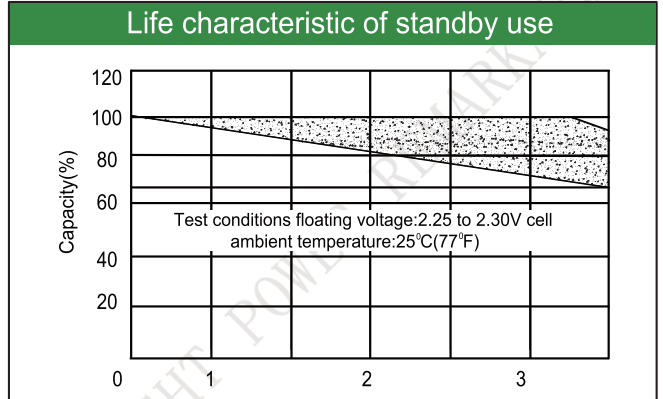
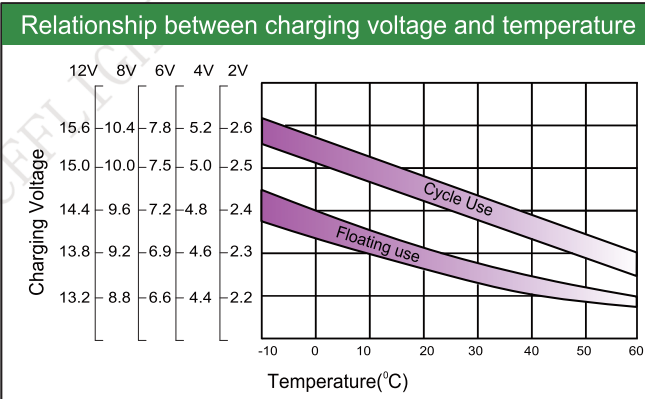
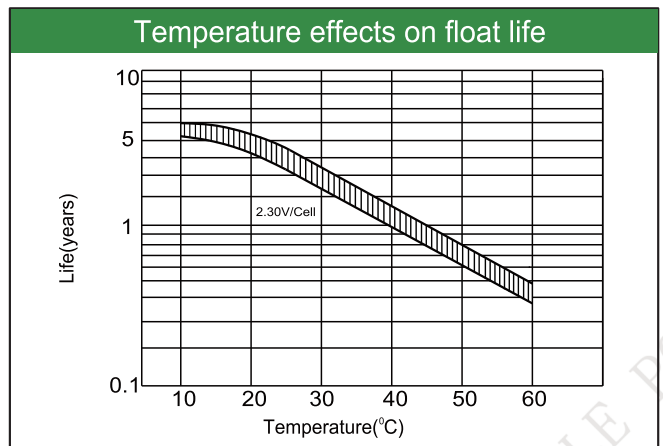
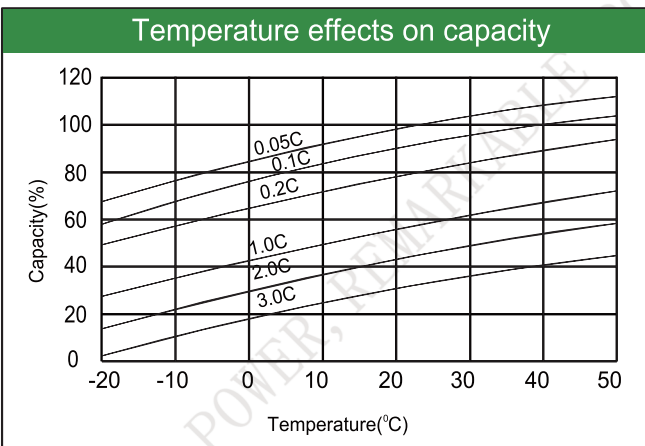
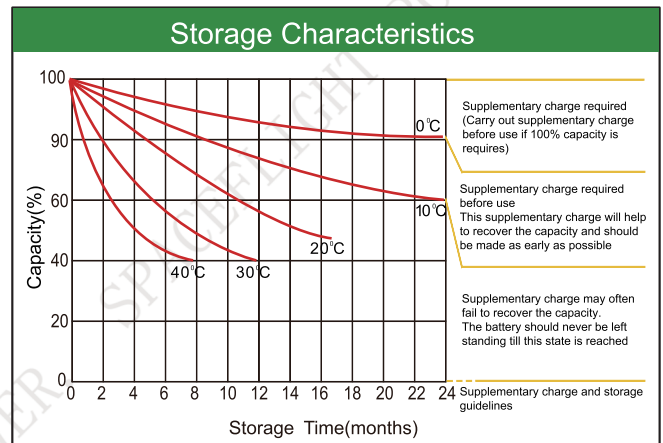
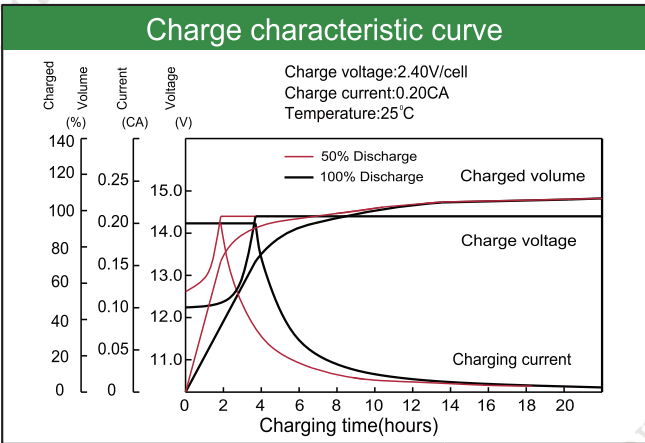
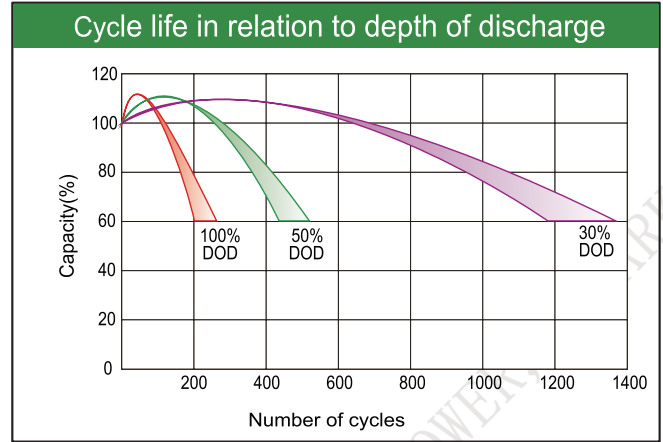
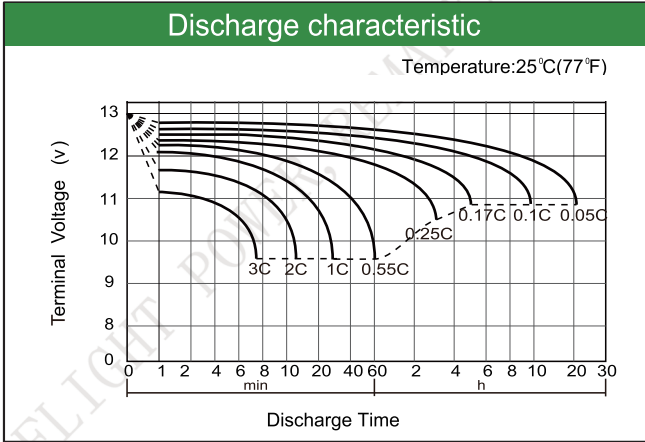
### Constant Current Discharge (Amperes) at 25°C(77°F)

E.V/Time	5min	10min	15min	30min	60min	3h	5h	10h	20h
1.60V	115	75.5	57.0	33.1	19.1	8.0	5.2	2.9	1.50
1.65V	110	73.0	55.0	32.1	18.6	7.8	5.1	2.8	1.49
1.67V	109	71.5	54.0	31.6	18.4	7.7	5.0	2.8	1.48
1.70V	107	70.0	53.0	31.0	18.1	7.6	4.9	2.8	1.47
1.75V	101	67.0	51.0	29.9	17.6	7.4	4.8	2.7	1.45
1.80V	94	63.5	48.5	28.6	16.9	7.2	4.6	2.6	1.40

### Constant Power Discharge (Watts/cell) at 25°C(77°F)

E.V/Time	5min	10min	15min	30min	45min	60min	2h	3h	5h
1.60V	212	134	105	61.5	45.0	35.0	20.0	13.8	9.5
1.65V	204	130	102	60.0	43.6	34.0	19.8	13.6	9.3
1.67V	200	128	100	59.2	43.1	33.6	19.9	13.5	9.2
1.70V	197	125	97.5	58.0	42.2	33.0	19.7	13.4	9.0
1.75V	187	120	93.5	56.0	40.8	32.0	19.1	13.1	8.7
1.80V	177	114	89	53.5	39.2	30.8	18.4	12.6	8.5

Note: The above characteristics data are average values obtained Within three charge/discharge cycles not the minimum.



Factory address: Fukang Industrial Zone, Longnan, Ganzhou, Jiangxi Province, China.  
 Shenzhen Office: RM208-210, Building D, Tongju industrial Park, No.4, Longping West Road, Longgang District, Shenzhen.  
 TEL: +86-755-28288189      [sales@sfbattery.com](mailto:sales@sfbattery.com)      [www.sfbattery.com](http://www.sfbattery.com)