

HTH Series Battery

SPACEFLIGHT HTH series battery is High Rate battery based on advanced AGM technology, by using specially designed plates with more active materials which makes the battery can work under a heavy load discharge applications.

Applications

- Uninterruptible power supplies
- Telecommunication systems
- Communication equipments
- Emergency Power Systems
- Security system

General Features

- 10-12 years designed floating life(25°C)
- Non-spillable construction
- Sealed and maintenance-free
- High reliability and stability
- High purity raw material: long life and low self-discharge

Standards

- Compliance with IEC, BS, JIS and EU standards
- UL, CE Certified
- ISO45001, ISO9001 and ISO14001 certified production facilities

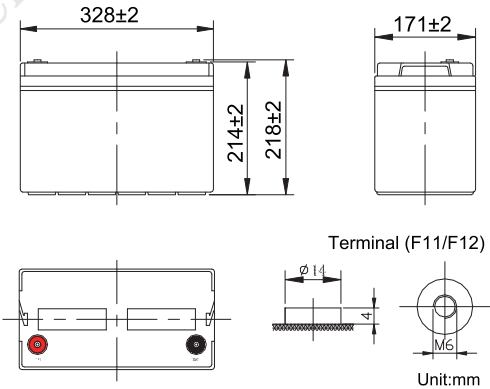
Specifications

Rated Voltage	12V	
Nominal Capacity	380W/Cell	(15min rate@1.67V)
Approx Weight	30.3kg±3%(66.8lbs)	
Terminal	F11/F12	
Rated Capacity(25°C)	106 Ah	(20hr,5.3A,10.5V)
	100 Ah	(10hr,9.8A,10.5V)
	91.5 Ah	(5hr,18.3A,10.5V)
	75 Ah	(1hr,75A,9.6V)
Max.Discharge Current	1000A(5s)	
Max.Charge Current	25A	
Internal Resistance(25°C)	Approx 5mΩ	
Operating Temp.Range	Discharge	-20~60°C(-4~140°F)
	Charge	-10~50°C(14~122°F)
	Storage	-20~60°C(-4~140°F)
Nominal operating temperature	25±5°C	
Charge Voltage @25°C(77°F)	Cycle Use	Initial Charging Current less than 25A. Voltage 14.4V~15.0V at 25°C(77°F)Temp. Coefficient -30mV/°C
	Standby Use	Initial Charging Current less than 25A. Voltage 13.5V~13.8V at 25°C(77°F)Temp. Coefficient -20mV/°C
Temperature effects on capacity	40°C (104°F)	103%
	25°C (77°F)	100%
	0°C (32°F)	86%
	-15°C (5°F)	65%
Self Discharge(25°C)	Capacity after 3 months storage	91%
	Capacity after 6 months storage	82%
	Capacity after 12 months storage	65%



Dimensions

unit:mm



Length	328±2mm (12.91 inches)
Width	171±2mm (6.73 inches)
Container Height	214±2mm (8.43 inches)
Total Height	218±2mm (8.58 inches)

Battery Construction

Component	Positive plate	Negative plate	Container	Safety valve	Terminal	Separator	Electrolyte
Raw material	Lead dioxide	Lead	ABS(UL94-HB) or FR(UL94-V0)	Rubber	Copper	Fiberglass	Sulfuric acid

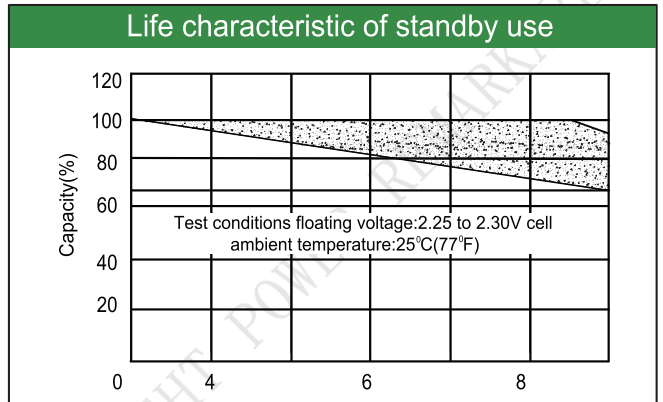
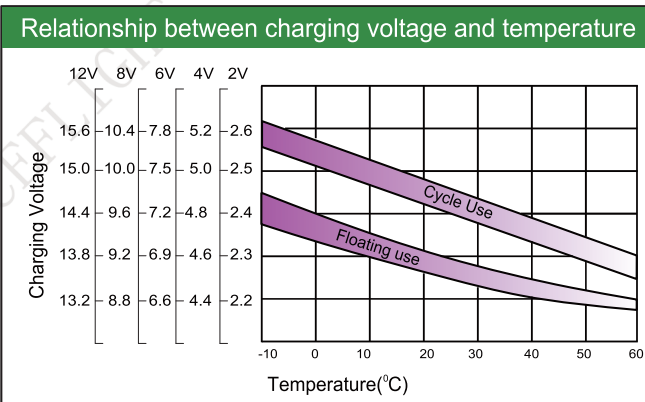
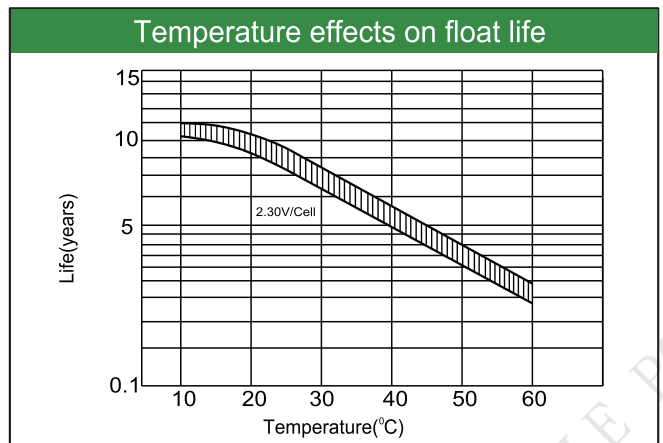
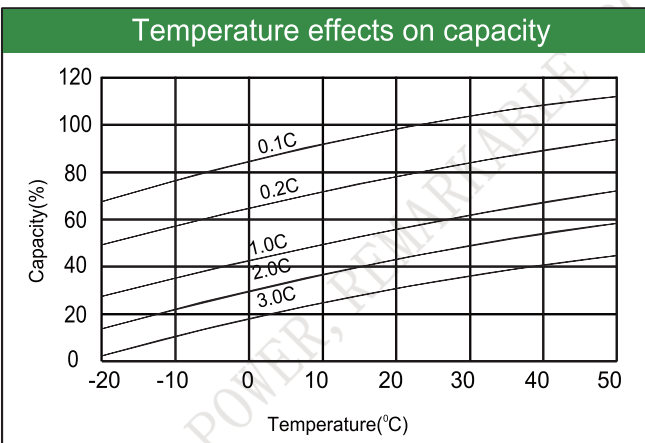
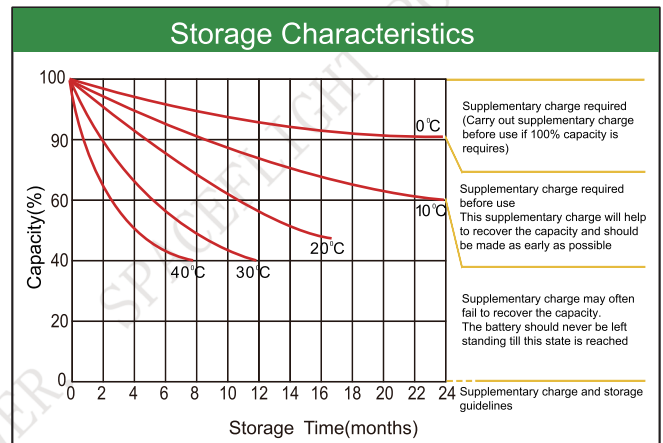
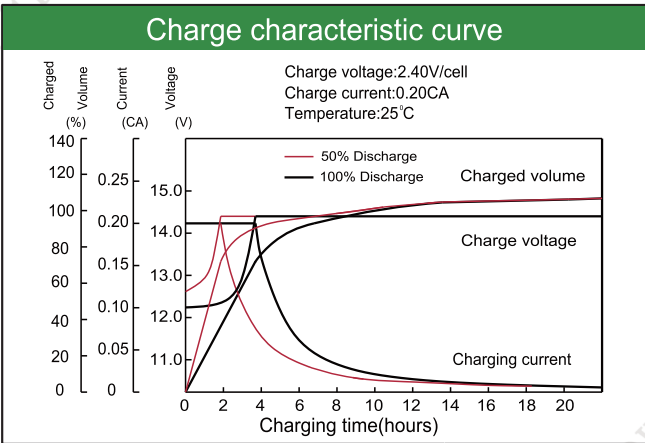
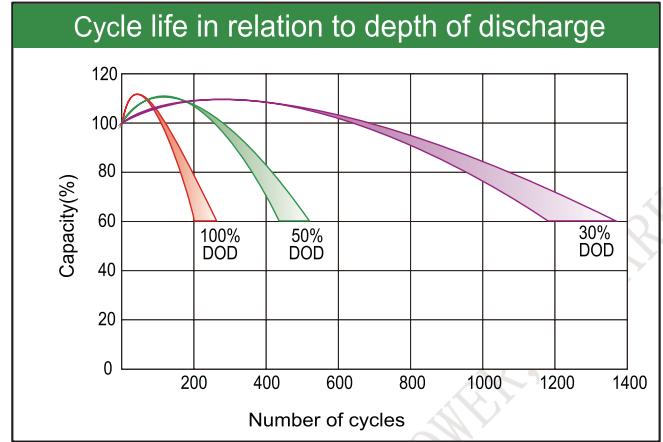
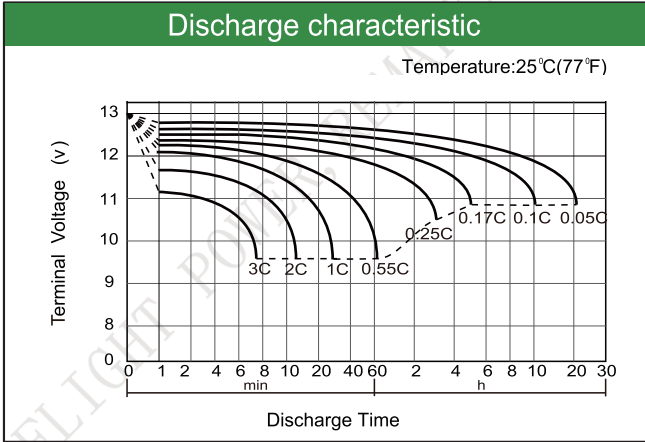
Constant Current Discharge (Amperes) at 25°C(77°F)

E.V/Time	5min	10min	15min	30min	1h	3h	5h	10h	20h
1.60V	355	283	220	125	75.0	29.1	19.5	10.3	5.45
1.65V	342	270	215	122	73.5	28.6	19.1	10.2	5.40
1.65V	333	263	210	120	72.5	28.3	18.9	10.2	5.37
1.70V	318	255	198	118	72.0	28.0	18.7	10.1	5.35
1.75V	295	240	186	114	70.5	27.4	18.3	10.0	5.30
1.80V	268	223	173	109	68.8	26.8	17.8	9.8	5.20

Constant Power Discharge (Watts/cell) at 25°C(77°F)

E.V/Time	5min	10min	15min	30min	45min	1h	2h	3h	5h
1.60V	631	471	388	231	165	128	71.0	52.3	35.5
1.65V	618	455	385	223	162	127	69.9	51.7	35.0
1.65V	601	445	380	220	160	125	69.0	51.0	34.5
1.70V	578	432	370	215	157	123	68.1	50.5	34.1
1.75V	555	421	358	207	152	120	66.6	49.6	33.4
1.80V	516	396	342	197	145	116	64.8	48.5	32.7

Note: The above characteristics data are average values obtained Within three charge/discharge cycles not the minimum.



Factory address: Fukang Industrial Zone, Longnan, Ganzhou, Jiangxi Province, China.
 Shenzhen Office: RM208-210, Building D, Tongju industrial Park, No.4, Longping West Road, Longgang District, Shenzhen.
 TEL: +86-755-28288189 sales@sfbattery.com www.sfbattery.com