

HTH Series Battery

SPACEFLIGHT HTH series battery is High Rate battery based on advanced AGM technology, by using specially designed plates with more active materials which makes the battery can work under a heavy load discharge applications.

Applications

- Uninterruptible power supplies
- Telecommunication systems
- Communication equipments
- Emergency Power Systems
- Security system

General Features

- 10-12 years designed floating life(25°C)
- Non-spillable construction
- Sealed and maintenance-free
- High reliability and stability
- High purity raw material: long life and low self-discharge

Standards

- Compliance with IEC, BS, JIS and EU standards
- UL, CE Certified
- ISO45001,ISO9001 and ISO14001 certified production facilities

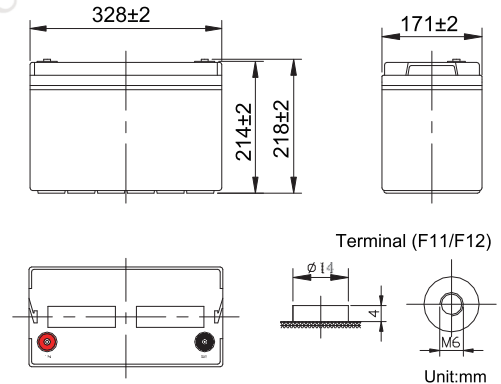
Specifications

| | | |
|---------------------------------|----------------------------------|---|
| Rated Voltage | 12V | |
| Nominal Capacity | 420W/Cell | (15min rate@1.67V) |
| Approx Weight | 31.6kg±3%(69.6lbs) | |
| Terminal | F11/F12 | |
| Rated Capacity(25°C) | 120 Ah | (20hr,6.0A,10.5V) |
| | 113 Ah | (10hr,11.3A,10.8V) |
| | 99.5 Ah | (5hr,19.9A,10.5V) |
| | 80.5 Ah | (1hr,80.5A,9.6V) |
| Max.Discharge Current | 1130A(5s) | |
| Max.Charge Current | 28.3A | |
| Internal Resistance(25°C) | Approx 4.5mΩ | |
| Operating Temp.Range | Discharge | -20~60°C(-4~140°F) |
| | Charge | -10~50°C(14~122°F) |
| | Storage | -20~60°C(-4~140°F) |
| Nominal operating temperature | 25±5°C | |
| Charge Voltage @25°C(77°F) | Cycle Use | Initial Charging Current less than 28.3A. Voltage 14.4V~15.0V at 25°C(77°F)Temp. Coefficient -30mV/°C |
| | Standby Use | Initial Charging Current less than 28.3A. Voltage 13.5V~13.8V at 25°C(77°F)Temp. Coefficient -20mV/°C |
| Temperature effects on capacity | 40°C (104°F) | 103% |
| | 25°C (77°F) | 100% |
| | 0°C (32°F) | 86% |
| | -15°C (5°F) | 65% |
| Self Discharge(25°C) | Capacity after 3 months storage | 91% |
| | Capacity after 6 months storage | 82% |
| | Capacity after 12 months storage | 65% |



Dimensions

unit:mm



| | |
|------------------|------------------------|
| Length | 328±2mm (12.91 inches) |
| Width | 171±2mm (6.73 inches) |
| Container Height | 214±2mm (8.43 inches) |
| Total Height | 218±2mm (8.58 inches) |

Battery Construction

| Component | Positive plate | Negative plate | Container | Safety valve | Terminal | Separator | Electrolyte |
|--------------|----------------|----------------|-----------------------------|--------------|----------|------------|---------------|
| Raw material | Lead dioxide | Lead | ABS(UL94-HB) or FR(UL94-V0) | Rubber | Copper | Fiberglass | Sulfuric acid |

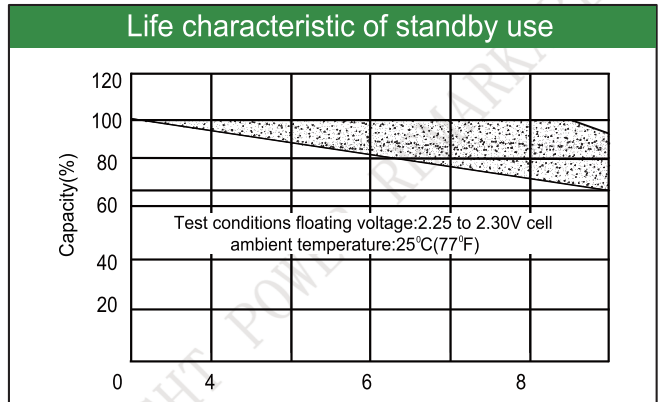
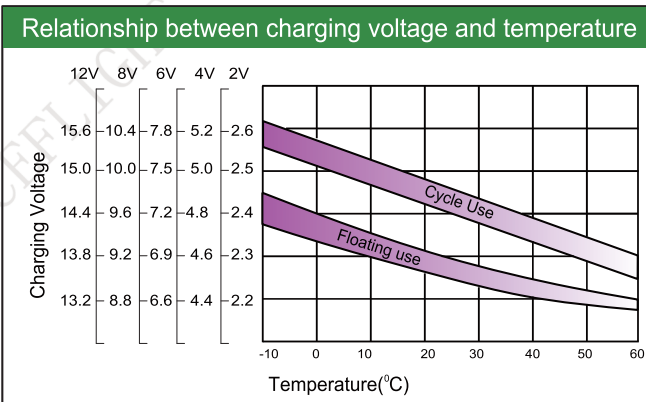
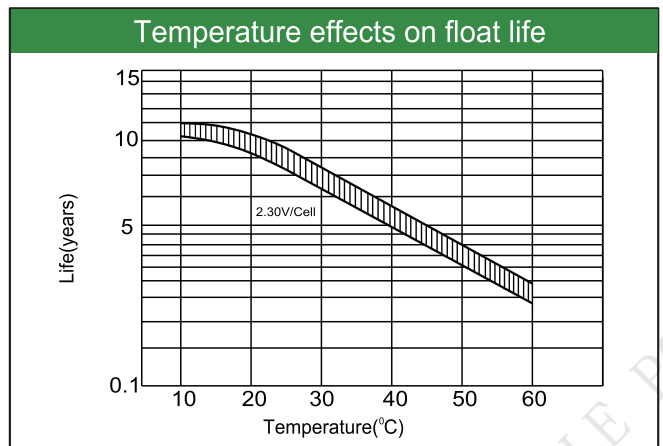
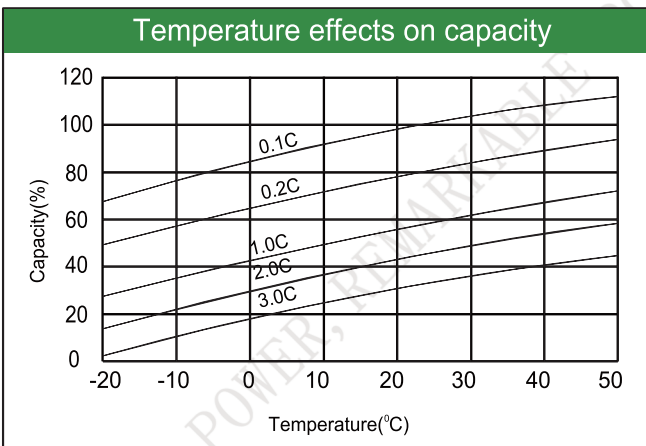
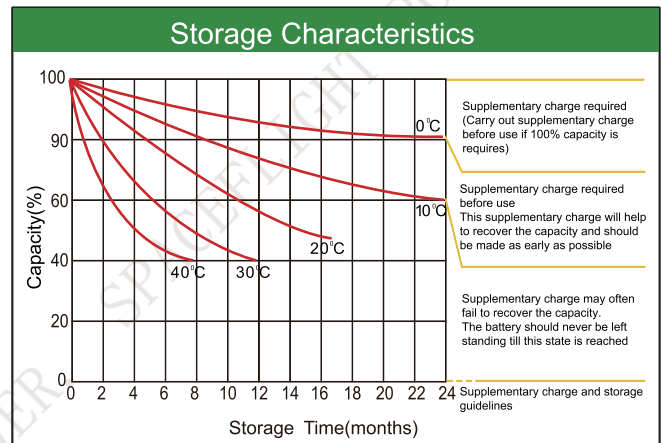
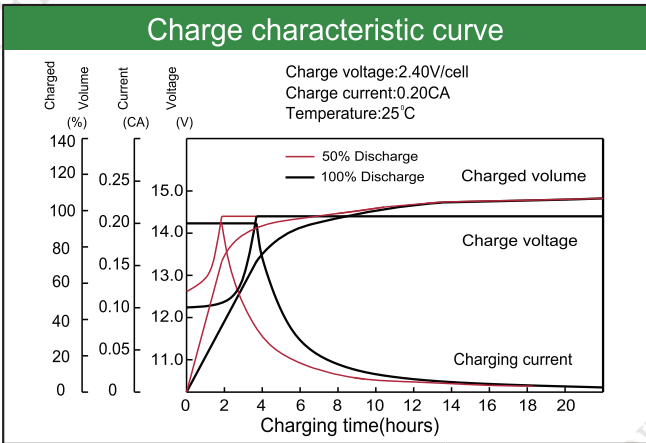
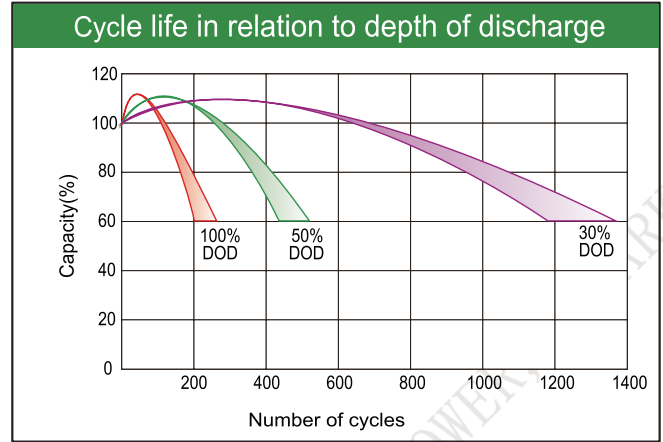
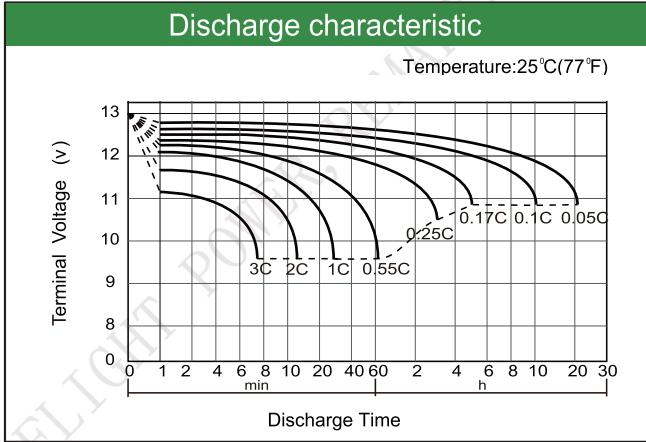
Constant Current Discharge (Amperes) at 25°C(77°F)

| E.V/Time | 5min | 10min | 15min | 30min | 1h | 3h | 5h | 10h | 20h |
|----------|------|-------|-------|-------|------|------|------|------|------|
| 1.60V | 380 | 305 | 245 | 135 | 80.5 | 33.6 | 21.6 | 11.7 | 6.15 |
| 1.65V | 365 | 289 | 235 | 132 | 79.0 | 32.6 | 21.1 | 11.7 | 6.10 |
| 1.67V | 352 | 279 | 227 | 130 | 78.1 | 32.1 | 20.8 | 11.7 | 6.08 |
| 1.70V | 334 | 270 | 220 | 128 | 77.1 | 31.5 | 20.5 | 11.6 | 6.05 |
| 1.75V | 315 | 252 | 212 | 124 | 75.0 | 30.4 | 19.9 | 11.5 | 6.00 |
| 1.80V | 286 | 234 | 195 | 117 | 72.8 | 29.2 | 19.2 | 11.3 | 5.90 |

Constant Power Discharge (Watts/cell) at 25°C(77°F)

| E.V/Time | 5min | 10min | 15min | 30min | 45min | 1h | 2h | 3h | 5h |
|----------|------|-------|-------|-------|-------|-----|------|------|------|
| 1.60V | 672 | 518 | 445 | 256 | 183 | 152 | 79.0 | 56.8 | 39.6 |
| 1.65V | 657 | 497 | 427 | 249 | 178 | 147 | 77.0 | 55.8 | 38.8 |
| 1.67V | 642 | 488 | 420 | 245 | 175 | 145 | 76.0 | 55.3 | 38.5 |
| 1.70V | 615 | 474 | 408 | 241 | 172 | 142 | 74.5 | 54.7 | 38.0 |
| 1.75V | 585 | 451 | 385 | 233 | 166 | 136 | 72.0 | 53.6 | 37.2 |
| 1.80V | 540 | 428 | 360 | 223 | 159 | 130 | 69.0 | 52.0 | 36.3 |

Note: The above characteristics data are average values obtained Within three charge/discharge cycles not the minimum.



Factory address: Fukang Industrial Zone, Longnan, Ganzhou, Jiangxi Province, China.
 Shenzhen Office: RM208-210, Building D, Tongju industrial Park, No.4, Longping West Road, Longgang District, Shenzhen.
 TEL: +86-755-28288189 sales@sfbattery.com www.sfbattery.com