

HTH Series Battery

SPACEFLIGHT HTH series battery is High Rate battery based on advanced AGM technology, by using specially designed plates with more active materials which makes the battery can work under a heavy load discharge applications.

Applications

- Uninterruptible power supplies
- Telecommunication systems
- Communication equipments
- Emergency Power Systems
- Security system

General Features

- 10-12 years designed floating life(25°C)
- Non-spillable construction
- Sealed and maintenance-free
- High reliability and stability
- High purity raw material: long life and low self-discharge

Standards

- Compliance with IEC, BS, JIS and EU standards
- UL, CE Certified
- ISO45001,ISO9001 and ISO14001 certified production facilities

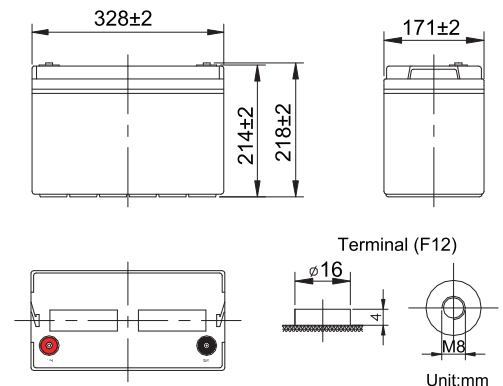
Specifications

Rated Voltage	12V	
Nominal Capacity	440W/Cell	(15min rate@1.67V)
Approx Weight	33.8kg±3%(74.52lbs)	
Terminal	F12	
Rated Capacity(25°C)	122 Ah	(20hr,6.1A,10.5V)
	118 Ah	(10hr,11.8A,10.8V)
	104 Ah	(5hr,20.8A,10.5V)
	84.3 Ah	(1hr,84.3A,9.6V)
Max.Discharge Current	1180A(5s)	
Max.Charge Current	29.5A	
Internal Resistance(25°C)	Approx 3.7mΩ	
Operating Temp.Range	Discharge	-20~60°C(-4~140°F)
	Charge	-10~50°C(14~122°F)
	Storage	-20~60°C(-4~140°F)
Nominal operating temperature	25±5°C	
Charge Voltage @25°C(77°F)	Cycle Use	Initial Charging Current less than 29.5A. Voltage 14.4V~15.0V at 25°C(77°F)Temp. Coefficient -30mV/°C
	Standby Use	Initial Charging Current less than 29.5A. Voltage 13.5V~13.8V at 25°C(77°F)Temp. Coefficient -20mV/°C
Temperature effects on capacity	40°C (104°F)	103%
	25°C (77°F)	100%
	0°C (32°F)	86%
	-15°C (5°F)	65%
Self Discharge(25°C)	Capacity after 3 months storage	91%
	Capacity after 6 months storage	82%
	Capacity after 12 months storage	65%



Dimensions

unit:mm



Length	328±2mm (12.91 inches)
Width	171±2mm (6.73 inches)
Container Height	214±2mm (8.43 inches)
Total Height	218±2mm (8.58 inches)

Battery Construction

Component	Positive plate	Negative plate	Container	Safety valve	Terminal	Separator	Electrolyte
Raw material	Lead dioxide	Lead	ABS(UL94-HB) or FR(UL94-V0)	Rubber	Copper	Fiberglass	Sulfuric acid

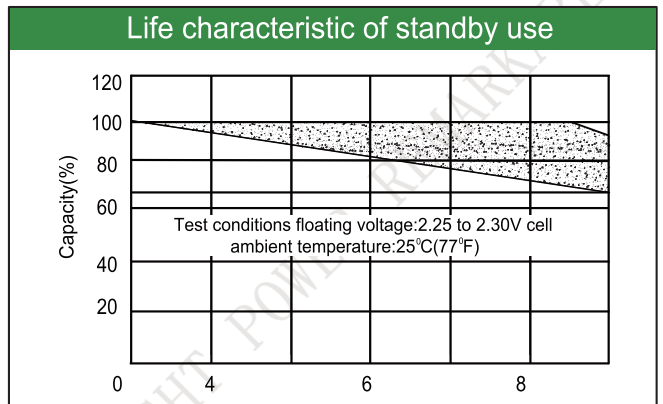
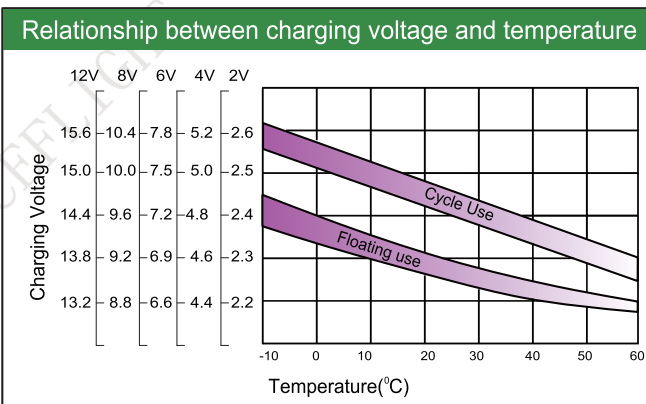
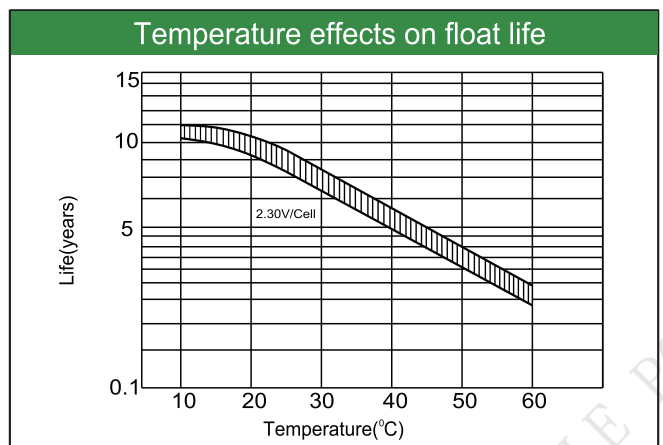
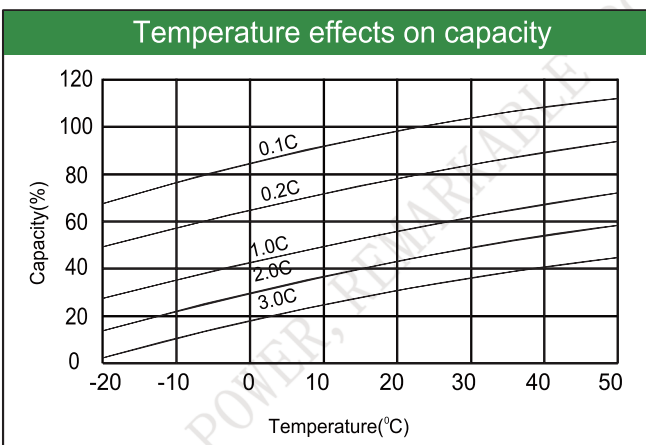
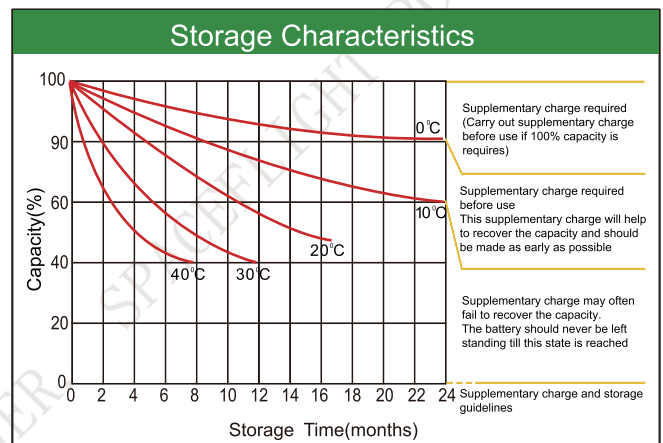
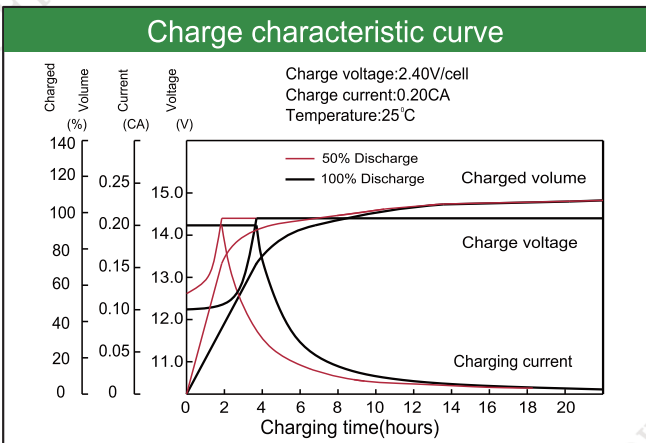
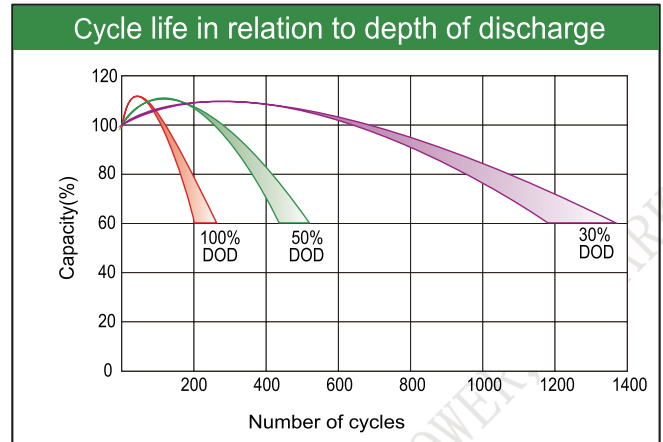
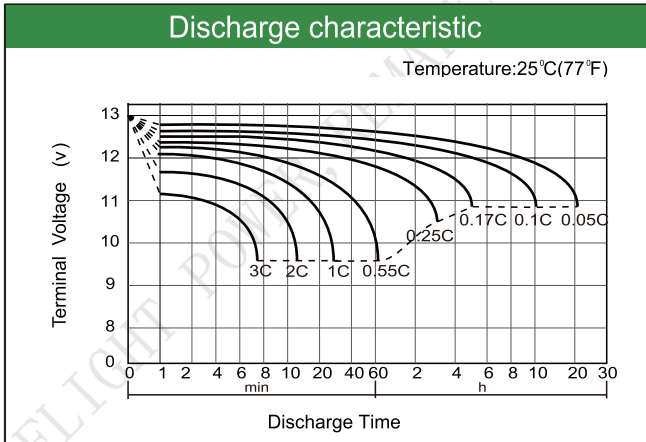
Constant Current Discharge (Amperes) at 25°C(77°F)

E.V/Time	5min	10min	15min	30min	1h	3h	5h	10h	20h
1.60V	/	320	262	141	84.3	35.2	22.6	12.0	6.2
1.65V	/	302	246	138	82.8	34.2	22.1	11.9	6.2
1.70V	/	283	230	134	80.8	33.0	21.5	11.9	6.1
1.75V	/	264	222	130	78.6	31.8	20.8	11.8	6.1
1.80V	/	245	204	114	76.3	30.6	20.1	11.8	6.0

Constant Power Discharge (Watts/cell) at 25°C(77°F)

E.V/Time	5min	10min	15min	30min	45min	1h	2h	3h	5h
1.60V	/	543	466	268	192	159	82.8	59.5	41.5
1.67V	/	511	440	257	183	152	79.6	57.9	40.3
1.70V	/	497	427	252	180	149	78.0	57.3	39.8
1.75V	/	472	403	244	173	142	75.4	56.2	39.0
1.80V	/	448	377	234	167	136	72.3	55.0	38.0

Note: The above characteristics data are average values obtained Within three charge/discharge cycles not the minimum.



Factory address: Fukang Industrial Zone, Longnan, Ganzhou, Jiangxi Province, China.
 Shenzhen Office: RM208-210, Building D, Tongju industrial Park, No.4, Longping West Road, Longgang District, Shenzhen.
 TEL: +86-755-28288189 sales@sfbattery.com www.sfbattery.com