

HTD Series Battery

SPACEFLIGHT HTD series battery is Deep Cycle AGM battery designed with thicker plates with more high-density active materials which makes the battery can with stand repeated deep cyclic applications.

Applications

- Uninterruptible power supplies
- Telecommunication systems
- Communication equipments
- Emergency Power Systems
- Security system

General Features

- 8 - 12 years designed floating life(25°C)
- Non-spillable construction
- Sealed and maintenance-free
- High reliability and stability
- High purity raw material: long life and low self-discharge

Standards

- Compliance with IEC, BS, JIS and EU standards
- UL, CE Certified
- ISO45001, ISO9001 and ISO14001 certified production facilities

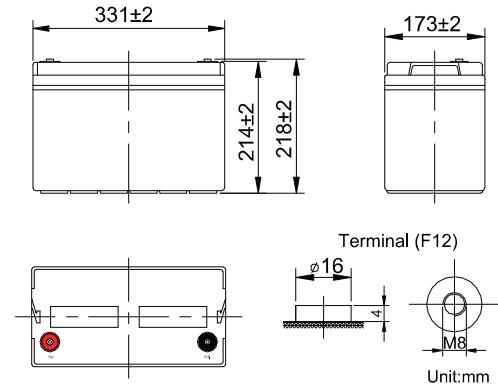
Specifications

Rated Voltage	12V	
Nominal Capacity	470W/Cell	(15min rate@1.67V)
Approx Weight	34.0kg±5%(74.9lbs)	
Terminal	F12	
Rated Capacity(25°C)	112 Ah	(20hr,5.6A,10.5V)
	108 Ah	(10hr,10.8A,10.8V)
	100 Ah	(5hr,20.0A,10.5V)
	84.0 Ah	(1hr,84.0A,9.6V)
Max.Discharge Current	1000A(5s)	
Max.Charge Current	27A	
Internal Resistance(25°C)	Approx 3.0mΩ	
Operating Temp.Range	Discharge	-20~60°C(-4~140°F)
	Charge	-10~50°C(14~122°F)
	Storage	-20~60°C(-4~140°F)
Nominal operating temperature	25±5°C	
Charge Voltage @25°C(77°F)	Cycle Use	Initial Charging Current less than 27A. Voltage 14.4V~15.0V at 25°C(77°F)Temp. Coefficient -30mV/°C
	Standby Use	Initial Charging Current less than 27A. Voltage 13.5V~13.8V at 25°C(77°F)Temp. Coefficient -20mV/°C
Temperature effects on capacity	40°C (104°F)	103%
	25°C (77°F)	100%
	0°C (32°F)	86%
	-15°C (5°F)	65%
Self Discharge(25°C)	Capacity after 3 months storage	91%
	Capacity after 6 months storage	82%
	Capacity after 12 months storage	65%



Dimensions

unit:mm



Length	331±2mm (13.03 inches)
Width	173±2mm (6.80 inches)
Container Height	214±2mm (8.43 inches)
Total Height	218±2mm (8.58 inches)

Battery Construction

Component	Positive plate	Negative plate	Container	Safety valve	Terminal	Separator	Electrolyte
Raw material	Lead dioxide	Lead	ABS(UL94-HB) or FR(UL94-V0)	Rubber	Copper	Fiberglass	Sulfuric acid

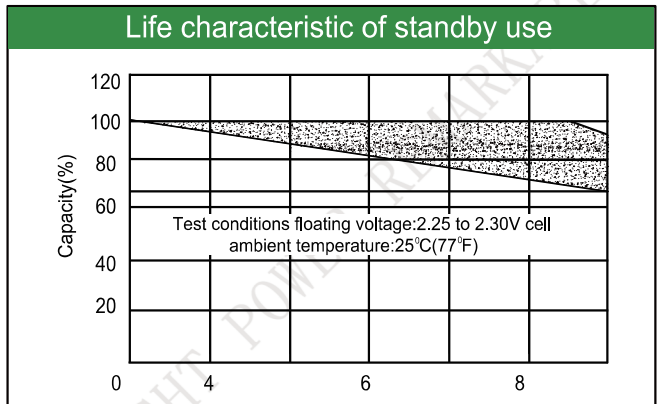
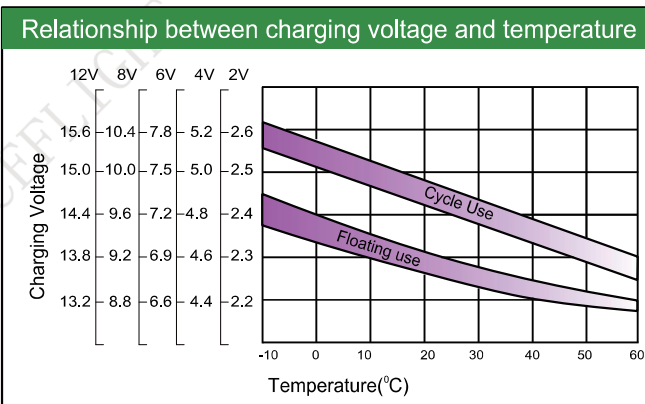
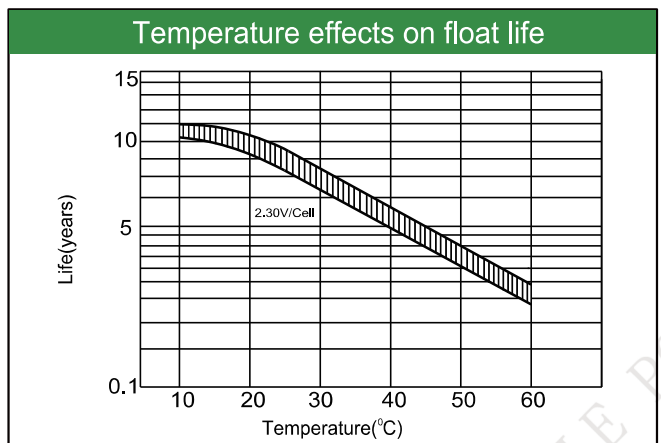
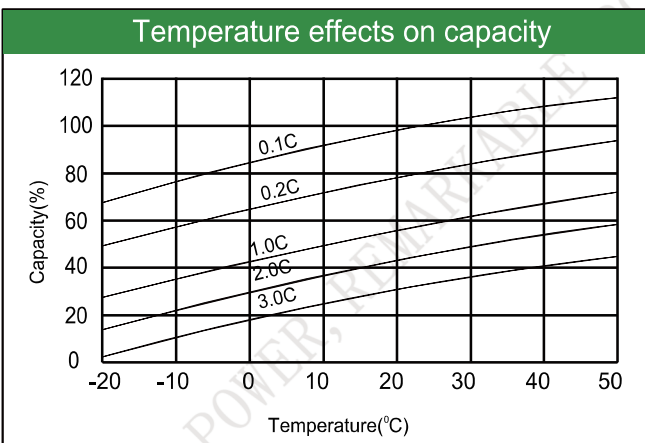
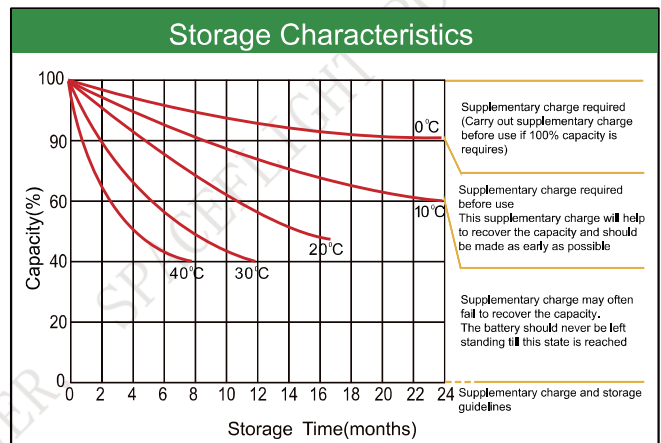
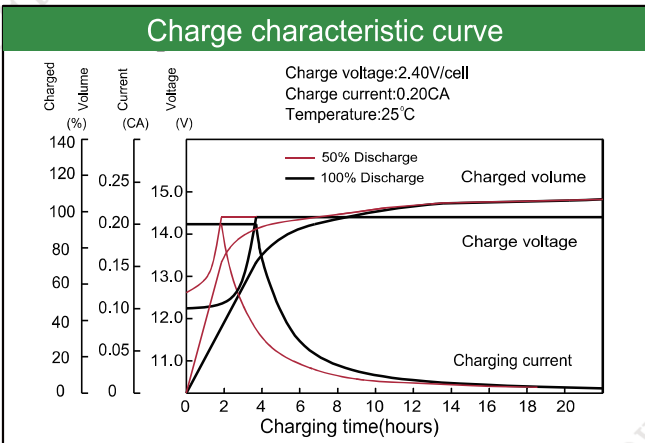
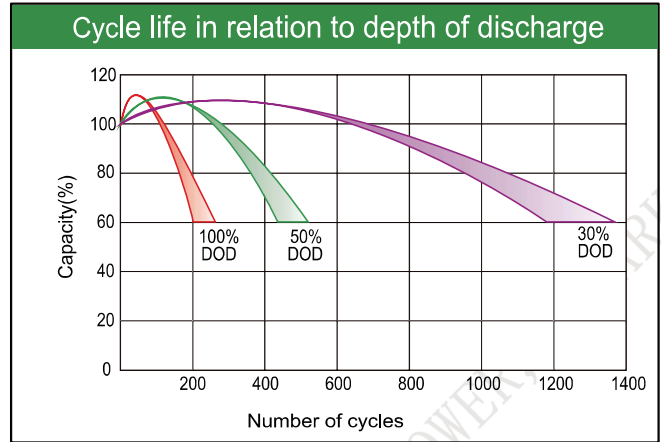
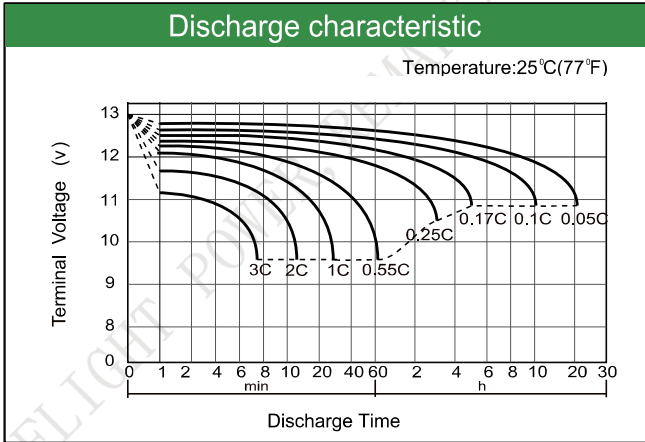
Constant Current Discharge (Amperes) at 25°C(77°F)

E.V/Time	5min	10min	15min	30min	1h	3h	5h	10h	20h
1.60V	/	342	280	151	84.3	35.2	21.7	11.1	5.78
1.65V	/	323	263	147	82.8	34.2	21.2	11.0	5.78
1.70V	/	302	246	143	80.8	33.0	20.6	10.9	5.69
1.75V	/	282	237	139	78.6	31.8	20.0	10.9	5.69
1.80V	/	262	218	122	76.3	30.6	19.3	10.8	5.60

Constant Power Discharge (Watts/cell) at 25°C(77°F)

E.V/Time	5min	10min	15min	30min	45min	1h	2h	3h	5h
1.60V	/	580	490	286	205	171	82.8	63.9	39.9
1.65V	/	557	474	278	199	166	80.7	62.8	39.2
1.67V	/	546	470	275	195	163	79.6	62.2	39.0
1.70V	/	531	456	269	192	160	78.0	61.7	38.3
1.75V	/	504	430	261	185	153	75.4	60.4	38.0
1.80V	/	479	403	250	178	146	72.3	59.1	37.1

Note: The above characteristics data are average values obtained Within three charge/discharge cycles not the minimum.



Factory address: Fukang Industrial Zone, Longnan, Ganzhou, Jiangxi Province, China.
 Shenzhen Office: RM208-210, Building D, Tongju industrial Park, No.4, Longping West Road, Longgang District, Shenzhen.
 TEL: +86-755-28288189 sales@sfbattery.com www.sfbattery.com