

HTH Series Battery

SPACEFLIGHT HTH series battery is High Rate battery based on advanced AGM technology, by using specially designed plates with more active materials which makes the battery can work under a heavy load discharge applications.

Applications

- Uninterruptible power supplies
- Telecommunication systems
- Communication equipments
- Emergency Power Systems
- Security system

General Features

- 10-12 years designed floating life(25°C)
- Non-spillable construction
- Sealed and maintenance-free
- High reliability and stability
- High purity raw material: long life and low self-discharge

Standards

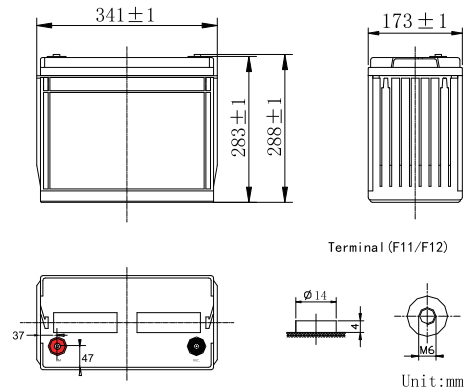
- Compliance with IEC, BS, JIS and EU standards
- UL, CE Certified
- ISO45001,ISO9001 and ISO14001 certified production facilities

Specifications

Rated Voltage	12V	
Nominal Capacity	600W/Cell	(15min rate@1.67V)
Approx Weight	47.5kg±3%(104.72lbs)	
Terminal	F11/F12	
Rated Capacity(25°C)	152 Ah	(20hr,7.6A,10.8V)
	150 Ah	(10hr,15.0A,10.8V)
	134 Ah	(5hr,26.8A,10.5V)
	119 Ah	(1hr,119A,9.6V)
Max.Discharge Current	1500A(5s)	
Max.Charge Current	37.5A	
Internal Resistance(25°C)	Approx 3.5mΩ	
Operating Temp.Range	Discharge	-20~60°C(-4~140°F)
	Charge	-10~50°C(14~122°F)
	Storage	-20~60°C(-4~140°F)
Nominal operating temperature	25±5°C	
Charge Voltage @25°C(77°F)	Cycle Use	Initial Charging Current less than 37.5A. Voltage 14.4V~15.0V at 25°C(77°F)Temp. Coefficient -30mV/°C
	Standby Use	Initial Charging Current less than 37.5A. Voltage 13.5V~13.8V at 25°C(77°F)Temp. Coefficient -20mV/°C
Temperature effects on capacity	40°C (104°F)	103%
	25°C (77°F)	100%
	0°C (32°F)	86%
	-15°C (5°F)	65%
Self Discharge(25°C)	Capacity after 3 months storage	91%
	Capacity after 6 months storage	82%
	Capacity after 12 months storage	65%



Dimensions unit:mm



Length	341±2mm (13.4 inches)
Width	173±2mm (6.81 inches)
Container Height	283±2mm (11.1 inches)
Total Height	288±2mm (11.3 inches)

Battery Construction

Component	Positive plate	Negative plate	Container	Safety valve	Terminal	Separator	Electrolyte
Raw material	Lead dioxide	Lead	ABS(UL94-HB) or FR(UL94-V0)	Rubber	Copper	Fiberglass	Sulfuric acid

Constant Current Discharge (Amperes) at 25°C(77°F)

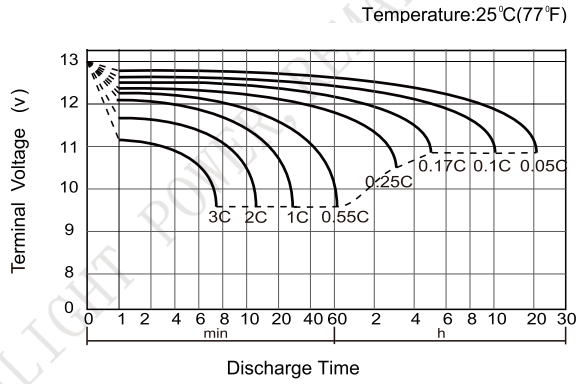
E.V/Time	5min	10min	15min	20min	30min	45min	1h	1.5h	2h
1.60V	/	430	352	294	217	158	119	86.0	67.8
1.65V	/	410	332	280	210	154	118	84.0	66.3
1.70V	/	387	312	265	202	150	115	81.9	64.6
1.75V	/	363	291	250	194	146	113	79.7	62.9
1.80V	/	338	269	234	185	141	110	77.1	60.9

Constant Power Discharge (Watts/cell) at 25°C(77°F)

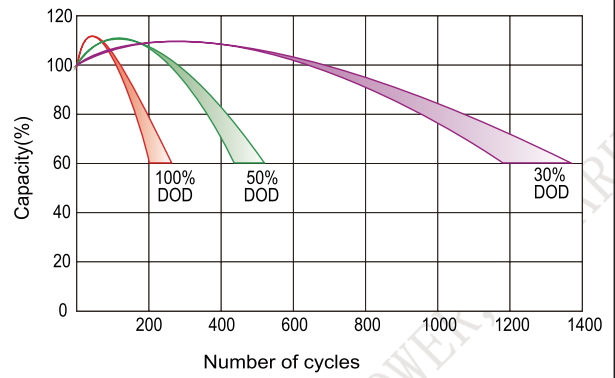
E.V/Time	5min	10min	15min	20min	30min	45min	1h	1.5h	2h
1.60V	/	704	635	496	397	295	234	169	134
1.65V	/	683	615	481	385	287	228	165	132
1.67V	/	669	600	473	381	283	225	163	130
1.70V	/	652	582	464	374	278	222	160	128
1.75V	/	629	554	447	362	268	216	156	125
1.80V	/	600	519	427	354	258	209	151	121

Note: The above characteristics data are average values obtained Within three charge/discharge cycles not the minimum.

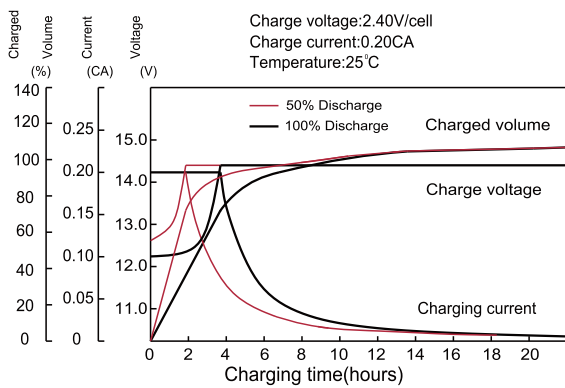
Discharge characteristic



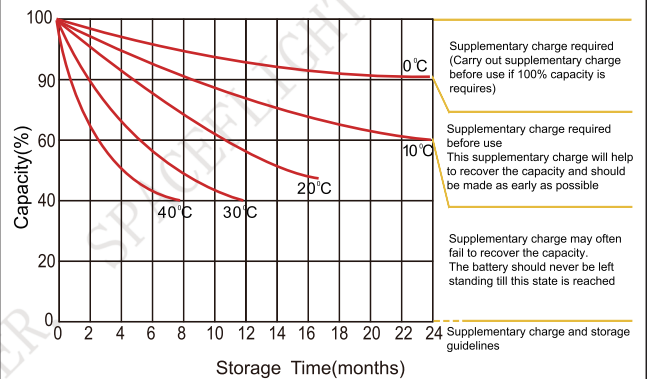
Cycle life in relation to depth of discharge



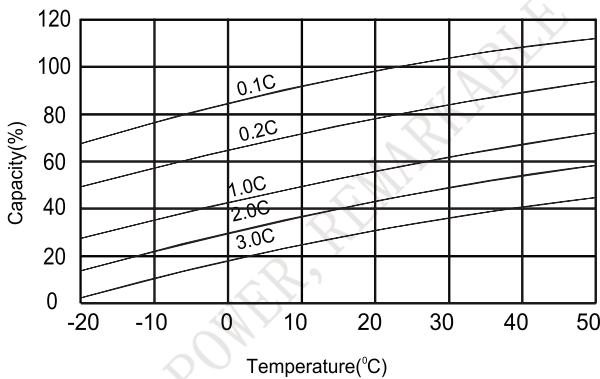
Charge characteristic curve



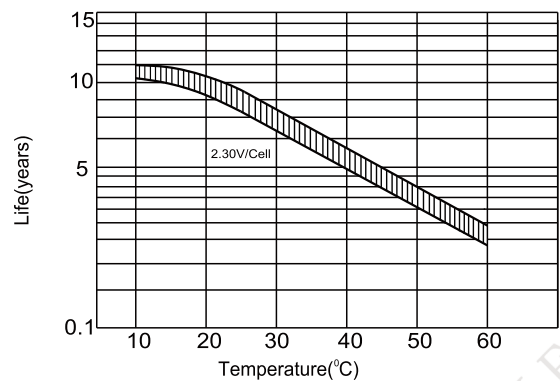
Storage Characteristics



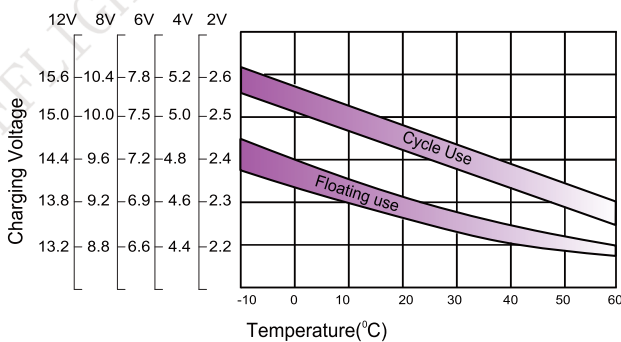
Temperature effects on capacity



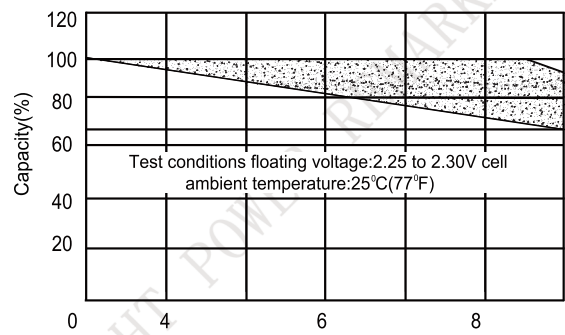
Temperature effects on float life



Relationship between charging voltage and temperature



Life characteristic of standby use



Factory address: Fukang Industrial Zone, Longnan, Ganzhou, Jiangxi Province, China.
Shenzhen Office: RM208-210, Building D, Tongju industrial Park, No.4, Longping West Road, Longgang District, Shenzhen.
TEL: +86-755-28288189 sales@sfbattery.com www.sfbattery.com