

### HTD Series Battery

SPACEFLIGHT HTD series battery is Deep Cycle AGM battery designed with thicker plates with more high-density active materials which makes the battery can with stand repeated deep cyclic applications.

#### Applications

- Uninterruptible power supplies
- Telecommunication systems
- Communication equipments
- Emergency Power Systems
- Security system

#### General Features

- 10-12 years designed floating life(25°C)
- Non-spillable construction
- Sealed and maintenance-free
- High reliability and stability
- High purity raw material: long life and low self-discharge

#### Standards

- Compliance with IEC, BS, JIS and EU standards
- UL, CE Certified
- ISO45001,ISO9001 and ISO14001 certified production facilities

#### Specifications

Rated Voltage	12V	
Nominal Capacity	870W/cell	(15min rate@1.67V)
Approx Weight	68.0kg±3%(150lbs)	
Terminal	F12	

Rated Capacity(25°C)	230 Ah	( 10hr,23.0A,10.8V)
	150 Ah	(1hr,150A,9.6V)

Max.Discharge Current 2300A(5s)

Max.Charge Current 57.5A

Internal Resistance(25°C) Approx2.9mΩ

Operating Temp.Range	Discharge	-20~60°C(-4~140°F)
	Charge	-10~50°C(14~122°F)
	Storage	-20~60°C(-4~140°F)

Nominal operating temperature 25±5°C

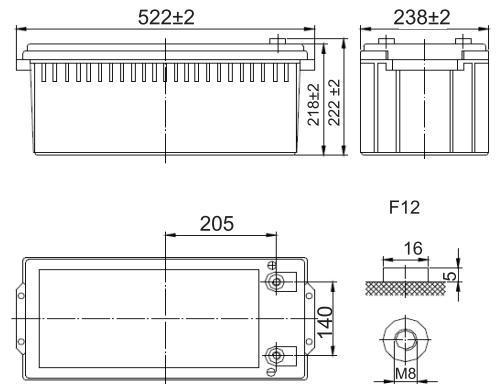
Charge Voltage @25°C(77°F)	Cycle Use	Initial Charging Current less than 57.5A. Voltage 14.4V~15.0V at 25°C(77°F)Temp. Coefficient -30mV/°C
	Standby Use	Initial Charging Current less than 57.5A. Voltage 13.5V~13.8V at 25°C(77°F)Temp. Coefficient -20mV/°C

Temperature effects on capacity	40°C (104°F)	103%
	25°C (77°F)	100%
	0°C (32°F)	86%
	-15°C (5°F)	65%

Self Discharge(25°C)	Capacity after 3 months storage	91%
	Capacity after 6 months storage	82%
	Capacity after 12 months storage	65%



#### Dimensions unit:mm



Length	522±2mm (20.55 inches)
Width	238±2mm (9.37 inches)
Container Height	218±2mm (8.58 inches)
Total Height	222±2mm (8.74 inches)

#### Battery Construction

Component	Positive plate	Negative plate	Container	Safety valve	Terminal	Separator	Electrolyte
Raw material	Lead dioxide	Lead	ABS(UL94-HB) or FR(UL94-V0)	Rubber	Copper	Fiberglass	Sulfuric acid

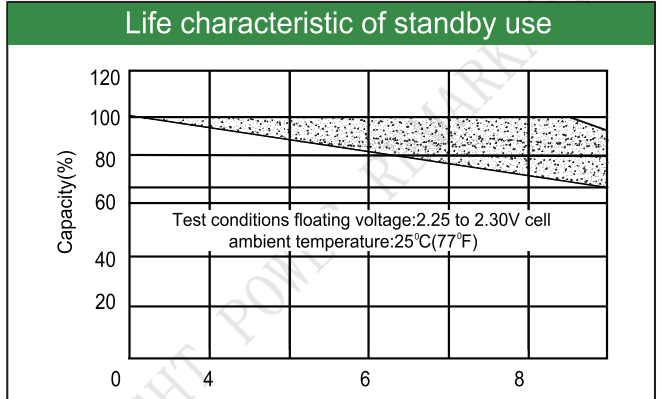
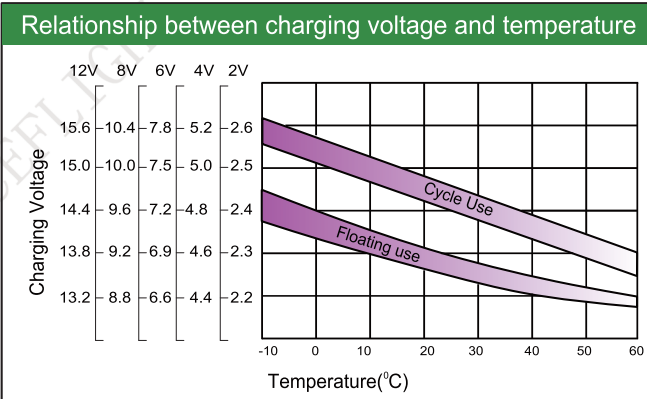
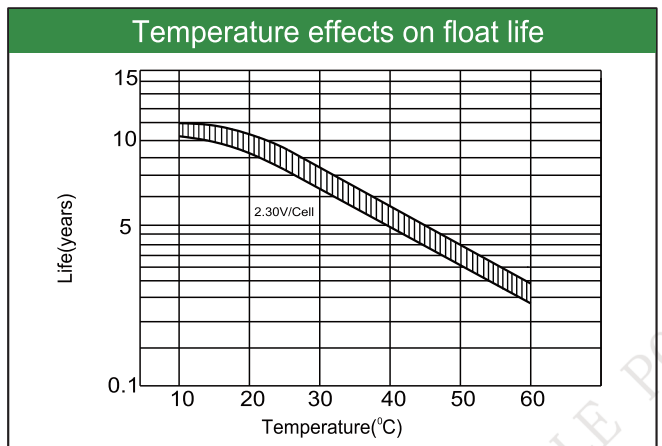
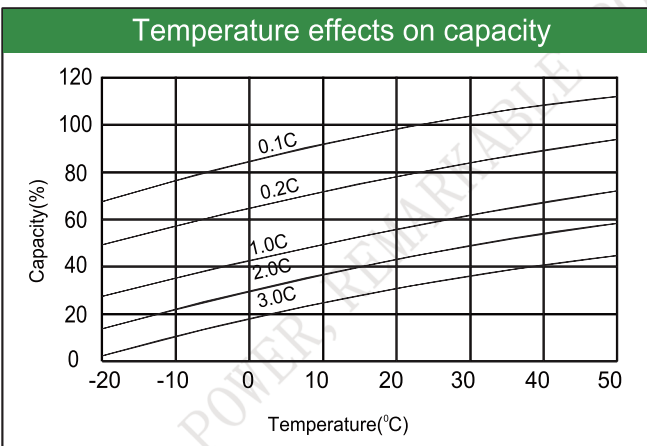
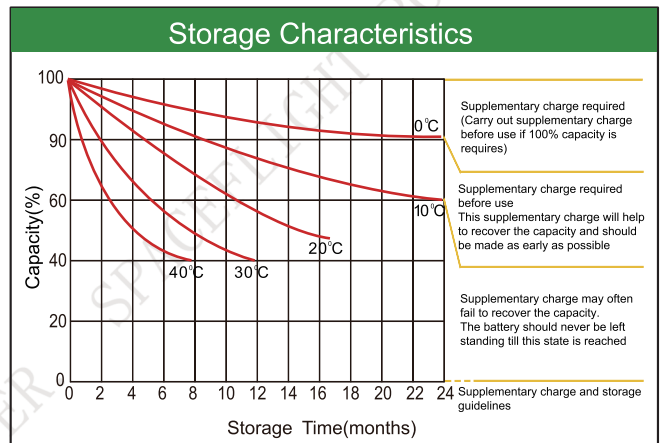
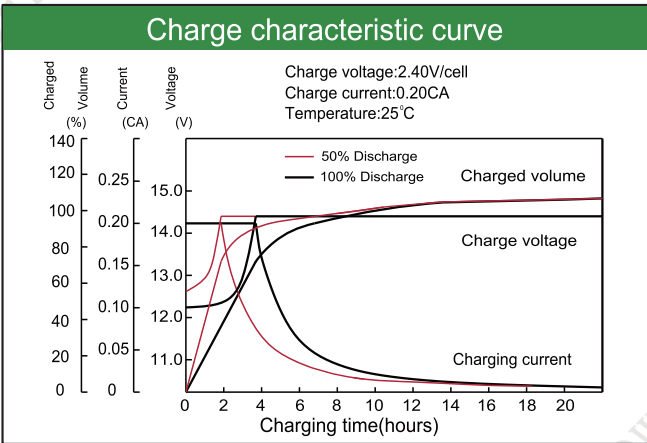
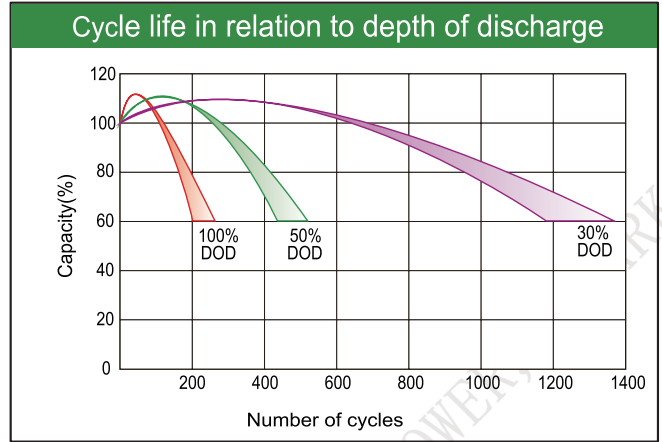
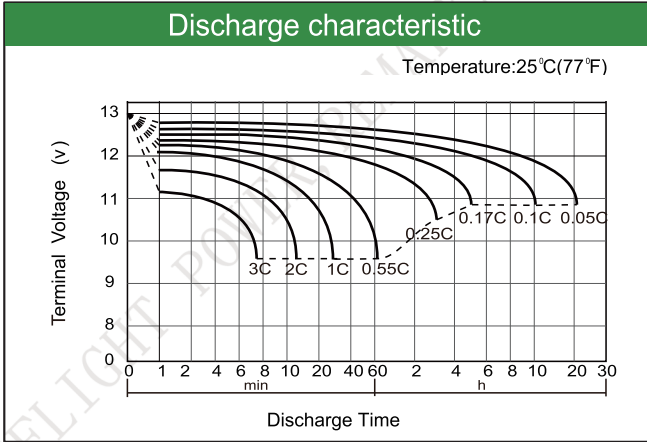
#### Constant Current Discharge (Amperes) at 25°C(77°F)

E.V/Time	5min	10min	15min	20min	30min	45min	60min
1.60V	/	606	470	380	272	195	150
1.67V	/	557	440	352	250	182	140
1.75V	/	525	408	326	229	169	132
1.80V	/	485	384	313	220	163	130

#### Constant Power Discharge (Watts/cell) at 25°C(77°F)

E.V/Time	5min	10min	15min	20min	30min	45min	60min
1.60V	/	1110	898	715	506	358	286
1.67V	/	1060	870	682	498	345	275
1.75V	/	996	827	648	475	331	262
1.80V	/	950	796	620	448	315	256

Note: The above characteristics data are average values obtained Within three charge/discharge cycles not the minimum.



Factory address: Fukang Industrial Zone, Longnan, Ganzhou, Jiangxi Province, China.  
 Shenzhen Office: RM208-210, Building D, Tongju industrial Park, No.4, Longping West Road, Longgang District, Shenzhen.  
 TEL: +86-755-28288189      [sales@sfbattery.com](mailto:sales@sfbattery.com)      [www.sfbattery.com](http://www.sfbattery.com)