

HTL Series Battery

SPACEFLIGHT HTL series battery is 2V Long Life lead acid battery which has been designed with special heavy duty grids and thicker plates which makes the battery provides consistent performance and longer service life at a critical application.

Applications

- Uninterruptible power supplies
- Telecommunication systems
- Communication equipments
- Emergency Power Systems
- Security systems
- Solar/Wind systems

General Features

- 20 years designed floating life(25°C)
- Non-spillable construction
- Sealed and maintenance-free
- High reliability and stability
- High purity raw material: long life and low self-discharge

Standards

- Compliance with IEC, BS, JIS and EU standards
- UL, CE Certified
- ISO45001,ISO9001 and ISO14001 certified production facilities

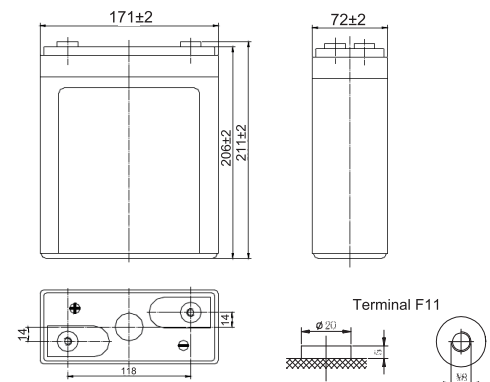
Specifications

Rated Voltage	2V	
Nominal Capacity	100Ah	(C ₁₀ ,1.8V)
Approx Weight	5.6kg±3%(12.35lbs)	
Terminal	F11	
Rated Capacity(25°C)	100 Ah	(10hr,10A,1.80V)
	88 Ah	(5hr,17.6A,1.75V)
	77.4 Ah	(3hr,25.8A,1.70V)
	65 Ah	(1hr,65A,1.60V)
Max.Discharge Current	500A(5s)	
Max.Charge Current	25A	
Internal Resistance(25°C)	Approx 1.5mΩ	
Operating Temp.Range	Discharge	-20~60°C(-4~140°F)
	Charge	-10~50°C(14~122°F)
	Storage	-20~60°C(-4~140°F)
Nominal operating temperature	25±5°C	
Charge Voltage	Cycle Use	Initial Charging Current less than 25A. Voltage 2.4V~2.5V at 25°C(77°F)Temp. Coefficient -30mV/°C
	Standby Use	Initial Charging Current less than 25A. Voltage 2.25V~2.3V at 25°C(77°F)Temp. Coefficient -20mV/°C
Temperature effects on capacity	40°C (104°F)	103%
	25°C (77°F)	100%
	0°C (32°F)	86%
	-15°C (5°F)	65%
Self Discharge(25°C)	Capacity after 3 months storage	91%
	Capacity after 6 months storage	82%
	Capacity after 12 months storage	65%



Dimensions

unit:mm



Length	72±2mm (2.83 inches)
Width	171±2mm (6.73 inches)
Container Height	206±2mm (8.11 inches)
Total Height	211±2mm (8.31 inches)

Battery Construction

Component	Positive plate	Negative plate	Container	Safety valve	Terminal	Separator	Electrolyte
Raw material	Lead dioxide	Lead	ABS(UL94-HB) or FR(UL94-V0)	Rubber	Copper	Fiberglass	Sulfuric acid

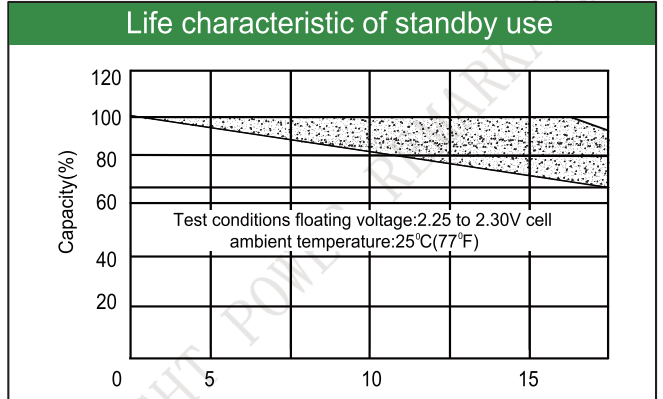
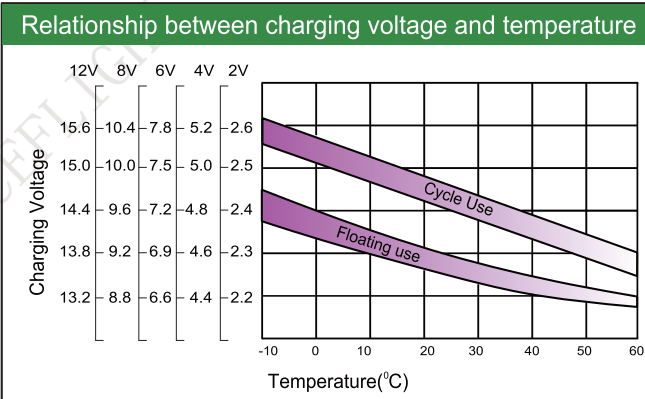
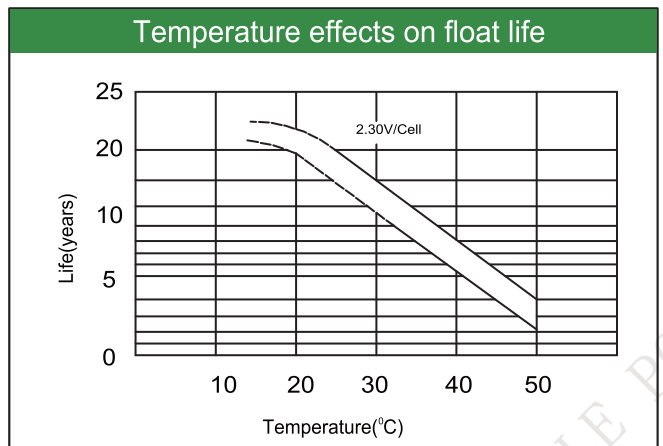
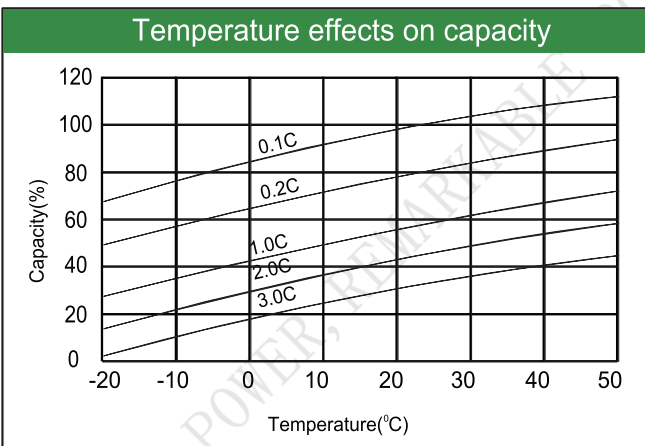
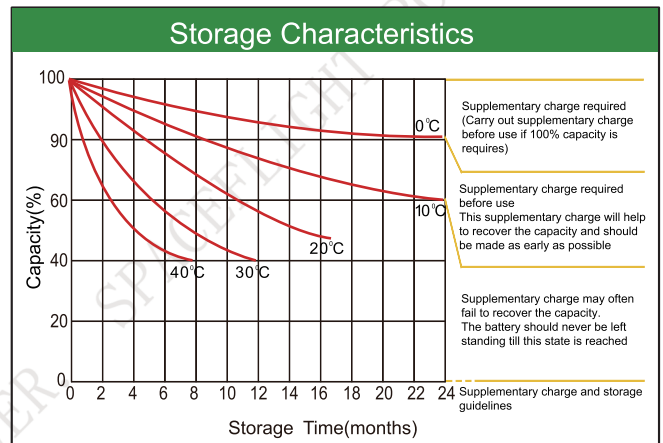
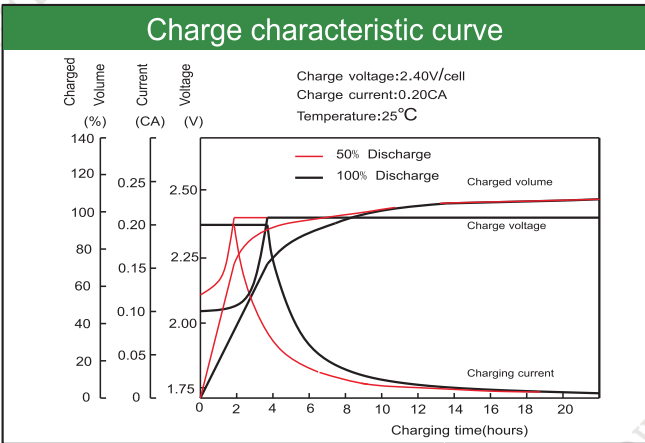
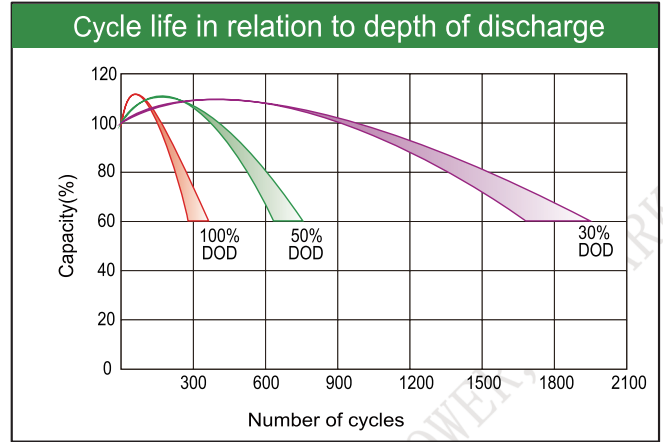
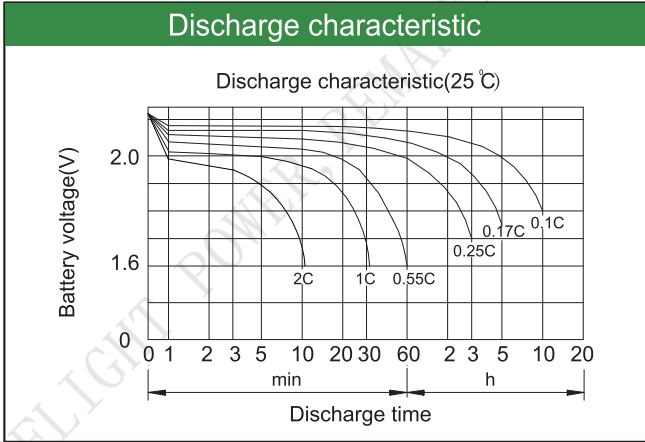
Constant Current Discharge (Amperes) at 25°C(77°F)

E.V/Time	5min	10min	15min	30min	45min	1h	3h	5h	10h
1.60V	/	230	175	98.0	81.0	65.0	27.5	19.3	10.8
1.65V	/	218	167	94.0	78.0	62.5	26.5	18.8	10.6
1.70V	/	206	159	90.0	74.0	60.0	25.8	18.2	10.4
1.75V	/	193	150	85.0	71.0	57.0	24.7	17.6	10.2
1.80V	/	180	140	80.5	67.0	54.0	23.6	17.1	10.0

Constant Power Discharge (Watts/cell) at 25°C(77°F)

E.V/Time	5min	10min	15min	30min	45min	1h	2h	3h	5h
1.60V	/	434	326	191	147	122	73.0	53.5	39.3
1.65V	/	410	307	187	140	117	71.0	52.2	38.6
1.70V	/	388	292	177	133	112	69.0	50.8	37.8
1.75V	/	364	279	165	126	105	66.0	49.2	37.0
1.80V	/	338	262	156	119	100	63.0	47.6	36.1

Note: The above characteristics data are average values obtained Within three charge/discharge cycles not the minimum.



Factory address: Fukang Industrial Zone, Longnan, Ganzhou, Jiangxi Province, China.
Shenzhen Office: RM208-210, Building D, Tongju industrial Park, No.4, Longping West Road, Longgang District, Shenzhen.
TEL: +86-755-28288189 sales@sfbattery.com www.sfbattery.com