

HTL Series Battery

SPACEFLIGHT HTL series battery is 2V Long Life lead acid battery which has been designed with special heavy duty grids and thicker plates which makes the battery provides consistent performance and longer service life at a critical application.

Applications

- Uninterruptible power supplies
- Telecommunication systems
- Communication equipments
- Emergency Power Systems
- Security systems
- Solar/Wind systems

General Features

- 20 years designed floating life(25°C)
- Non-spillable construction
- Sealed and maintenance-free
- High reliability and stability
- High purity raw material: long life and low self-discharge

Standards

- Compliance with IEC, BS, JIS and EU standards
- UL, CE Certified
- ISO45001,ISO9001 and ISO14001 certified production facilities

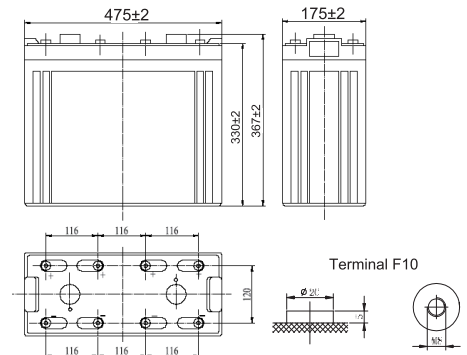
Specifications

Rated Voltage	2V	
Nominal Capacity	1000Ah	(C ₁₀ , 1.8V)
Approx Weight	61kg±3%(134.48lbs)	
Terminal	F10	
Rated Capacity(25°C)	1000 Ah	(10hr, 100A, 1.80V)
	890 Ah	(5hr, 178A, 1.75V)
	756 Ah	(3hr, 252A, 1.70V)
	615 Ah	(1hr, 615A, 1.60V)
Max.Discharge Current	5000A(5s)	
Max.Charge Current	250A	
Internal Resistance(25°C)	Approx 0.5mΩ	
Operating Temp.Range	Discharge	-20~60°C(-4~140°F)
	Charge	-10~50°C(14~122°F)
	Storage	-20~60°C(-4~140°F)
Nominal operating temperature	25±5°C	
Charge Voltage	Cycle Use	Initial Charging Current less than 250A. Voltage 2.4V~2.5V at 25°C(77°F)Temp. Coefficient -30mV/°C
	Standby Use	Initial Charging Current less than 250A. Voltage 2.25V~2.3V at 25°C(77°F)Temp. Coefficient -20mV/°C
Temperature effects on capacity	40°C (104°F)	103%
	25°C (77°F)	100%
	0°C (32°F)	86%
	-15°C (5°F)	65%
Self Discharge(25°C)	Capacity after 3 months storage	91%
	Capacity after 6 months storage	82%
	Capacity after 12 months storage	65%



Dimensions

unit:mm



Length	475±2mm (18.7 inches)
Width	175±2mm (6.89 inches)
Container Height	330±2mm (13.0 inches)
Total Height	367±2mm (14.45 inches)

Battery Construction

Component	Positive plate	Negative plate	Container	Safety valve	Terminal	Separator	Electrolyte
Raw material	Lead dioxide	Lead	ABS(UL94-HB) or FR(UL94-V0)	Rubber	Copper	Fiberglass	Sulfuric acid

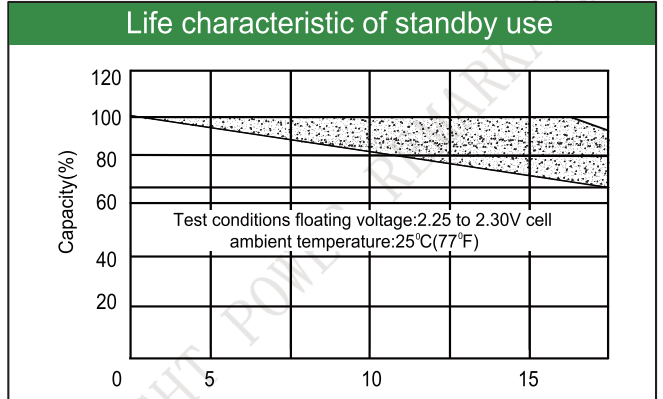
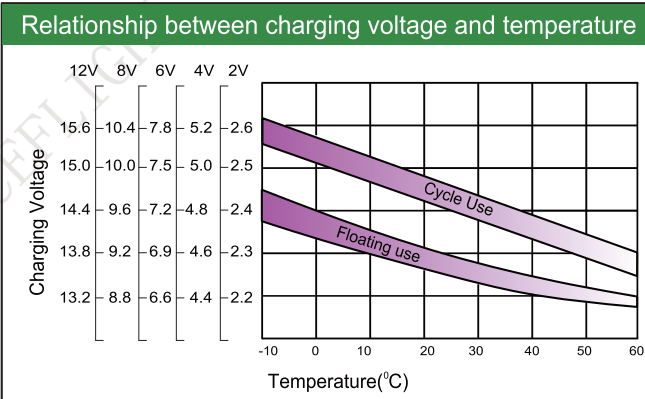
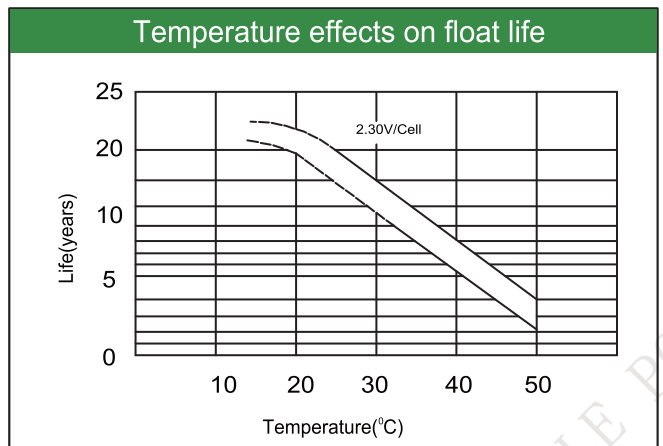
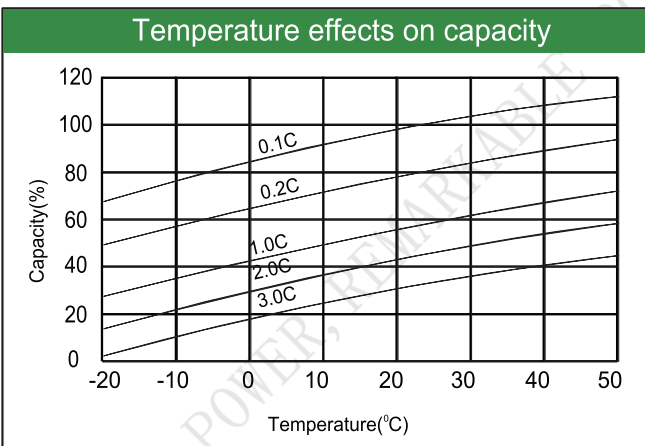
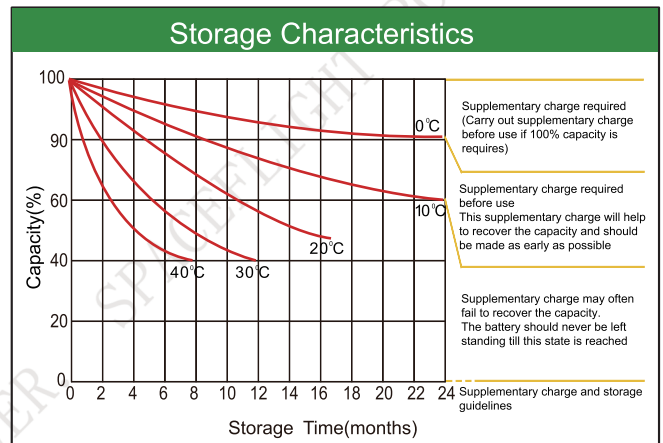
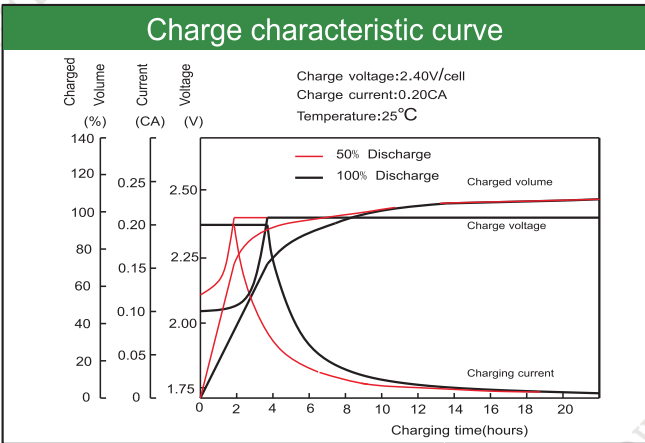
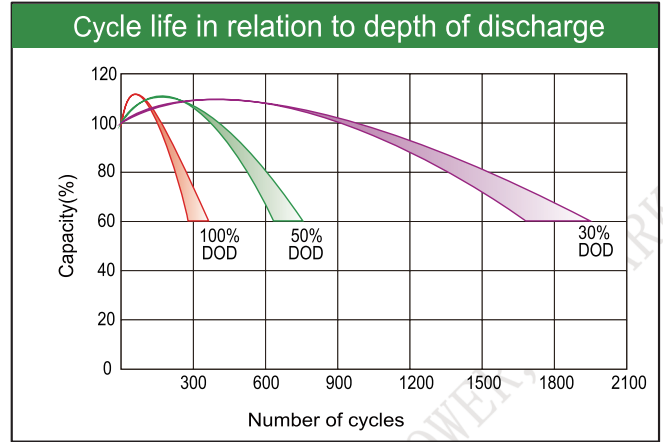
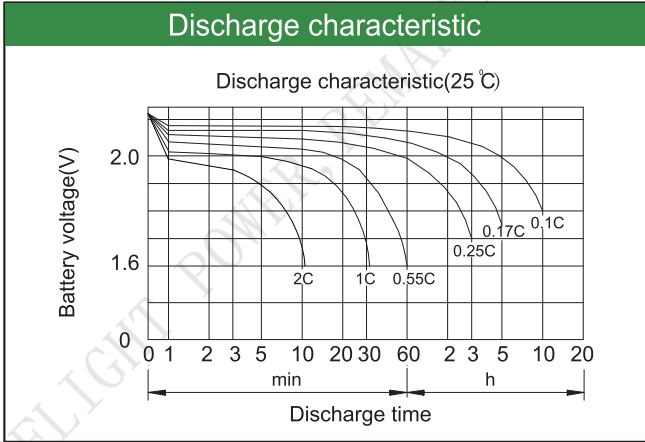
Constant Current Discharge (Amperes) at 25°C(77°F)

E.V/Time	5min	10min	15min	30min	45min	1h	3h	5h	10h
1.60V	/	1710	1513	993	719	615	260	192	107
1.65V	/	1622	1440	949	690	597	256	188	106
1.70V	/	1531	1364	903	659	575	252	183	104
1.75V	/	1434	1287	856	627	558	248	178	102
1.80V	/	1339	1210	808	583	531	243	172	100

Constant Power Discharge (Watts/cell) at 25°C(77°F)

E.V/Time	5min	10min	15min	30min	45min	1h	2h	3h	5h
1.60V	/	2784	2505	1629	1174	1017	679	449	317
1.65V	/	2735	2422	1584	1153	1000	672	446	314
1.70V	/	2647	2355	1562	1142	995	648	440	309
1.75V	/	2547	2294	1516	1111	987	620	436	308
1.80V	/	2450	2228	1487	1070	979	590	434	301

Note: The above characteristics data are average values obtained Within three charge/discharge cycles not the minimum.



Factory address: Fukang Industrial Zone, Longnan, Ganzhou, Jiangxi Province, China.
 Shenzhen Office: RM208-210, Building D, Tongju industrial Park, No.4, Longping West Road, Longgang District, Shenzhen.
 TEL: +86-755-28288189 sales@sfbattery.com www.sfbattery.com