

HTL Series Battery

SPACEFLIGHT HTL series battery is 2V Long Life lead acid battery which has been designed with special heavy duty grids and thicker plates which makes the battery provides consistent performance and longer service life at a critical application.

Applications

- Uninterruptible power supplies
- Telecommunication systems
- Communication equipments
- Emergency Power Systems
- Security systems
- Solar/Wind systems

General Features

- 20 years designed floating life(25°C)
- Non-spillable construction
- Sealed and maintenance-free
- High reliability and stability
- High purity raw material: long life and low self-discharge

Standards

- Compliance with IEC, BS, JIS and EU standards
- UL, CE Certified
- ISO45001,ISO9001 and ISO14001 certified production facilities

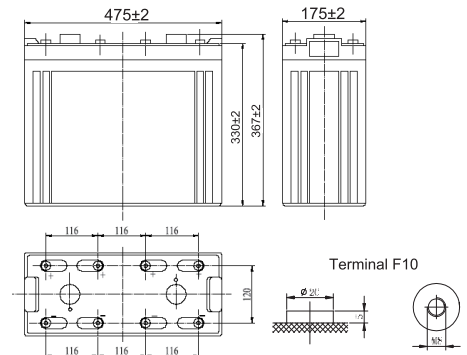
Specifications

Rated Voltage	2V	
Nominal Capacity	1200Ah	(C ₁₀ ,1.8V)
Approx Weight	67kg±3%(147.71lbs)	
Terminal	F10	
Rated Capacity(25°C)	1200 Ah	(10hr,120A,1.80V)
	1040 Ah	(5hr,208A,1.75V)
	915 Ah	(3hr,305A,1.70V)
	735 Ah	(1hr,735A,1.60V)
Max.Discharge Current	6000A(5s)	
Max.Charge Current	300A	
Internal Resistance(25°C)	Approx 0.5mΩ	
Operating Temp.Range	Discharge	-20~60°C(-4~140°F)
	Charge	-10~50°C(14~122°F)
	Storage	-20~60°C(-4~140°F)
Nominal operating temperature	25±5°C	
Charge Voltage	Cycle Use	Initial Charging Current less than 300A. Voltage 2.4V~2.5V at 25°C(77°F)Temp. Coefficient -30mV/°C
	Standby Use	Initial Charging Current less than 300A. Voltage 2.25V~2.3V at 25°C(77°F)Temp. Coefficient -20mV/°C
Temperature effects on capacity	40°C (104°F)	103%
	25°C (77°F)	100%
	0°C (32°F)	86%
	-15°C (5°F)	65%
Self Discharge(25°C)	Capacity after 3 months storage	91%
	Capacity after 6 months storage	82%
	Capacity after 12 months storage	65%



Dimensions

unit:mm



Length	475±2mm (18.7 inches)
Width	175±2mm (6.89 inches)
Container Height	330±2mm (13.0 inches)
Total Height	367±2mm (14.45 inches)

Battery Construction

Component	Positive plate	Negative plate	Container	Safety valve	Terminal	Separator	Electrolyte
Raw material	Lead dioxide	Lead	ABS(UL94-HB) or FR(UL94-V0)	Rubber	Copper	Fiberglass	Sulfuric acid

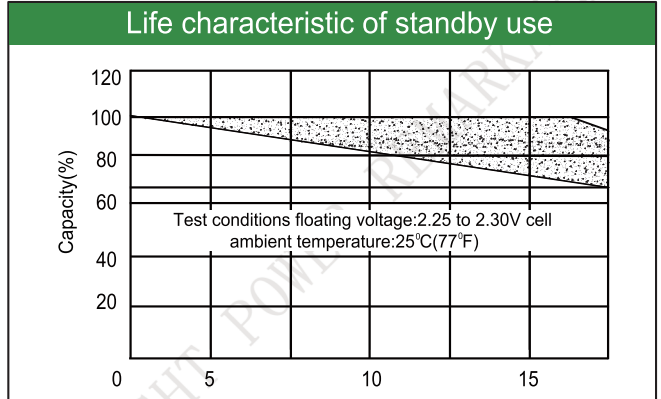
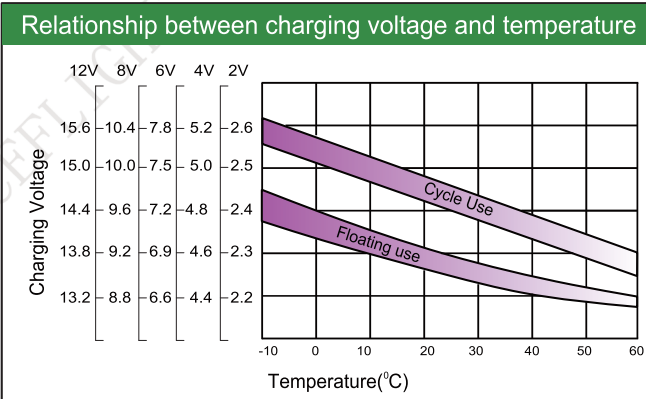
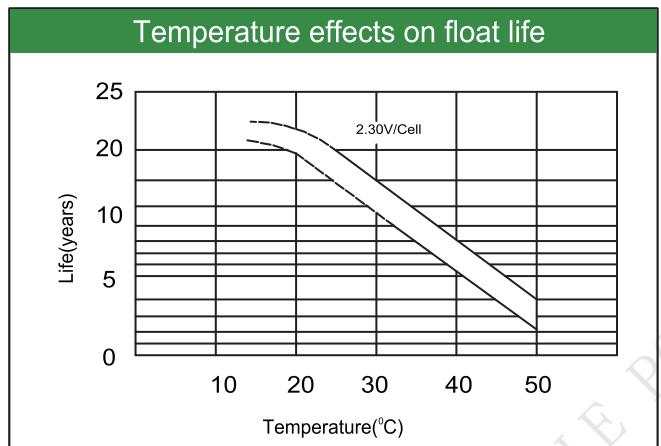
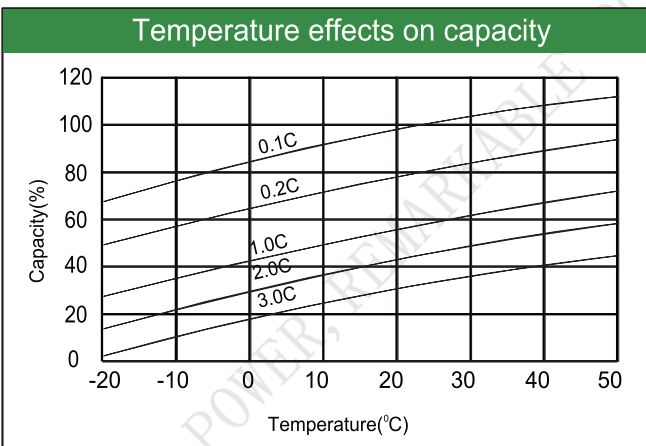
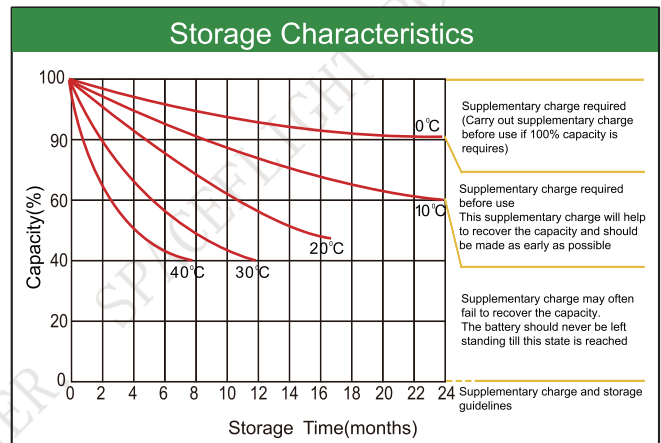
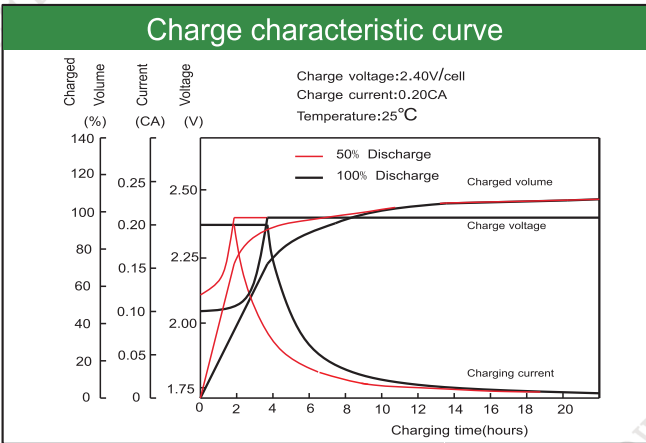
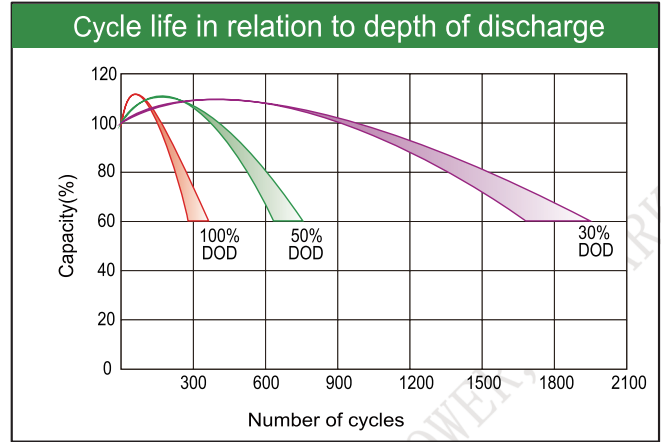
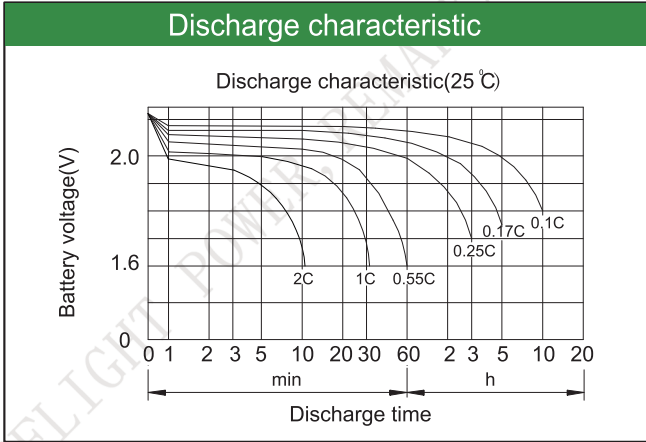
Constant Current Discharge (Amperes) at 25°C(77°F)

E.V/Time	5min	10min	15min	30min	45min	1h	3h	5h	10h
1.60V	/	2054	1816	1191	863	735	316	222	127
1.65V	/	1947	1728	1139	828	717	311	218	126
1.70V	/	1837	1637	1083	791	690	305	213	124
1.75V	/	1721	1545	1027	753	670	299	208	122
1.80V	/	1607	1452	969	700	638	292	202	120

Constant Power Discharge (Watts/cell) at 25°C(77°F)

E.V/Time	5min	10min	15min	30min	45min	1h	2h	3h	5h
1.60V	/	3340	3005	1954	1408	1220	815	539	381
1.65V	/	3281	2905	1901	1384	1200	806	535	377
1.70V	/	3176	2825	1874	1370	1193	777	528	371
1.75V	/	3056	2753	1819	1333	1184	744	524	369
1.80V	/	2940	2674	1785	1283	1174	708	521	361

Note: The above characteristics data are average values obtained Within three charge/discharge cycles not the minimum.



Factory address: Fukang Industrial Zone, Longnan, Ganzhou, Jiangxi Province, China.
 Shenzhen Office: RM208-210, Building D, Tongju industrial Park, No.4, Longping West Road, Longgang District, Shenzhen.
 TEL: +86-755-28288189 sales@sfbattery.com www.sfbattery.com