

HTL Series Battery

SPACEFLIGHT HTL series battery is 2V Long Life lead acid battery which has been designed with special heavy duty grids and thicker plates which makes the battery provides consistent performance and longer service life at a critical application.

Applications

- Uninterruptible power supplies
- Telecommunication systems
- Communication equipments
- Emergency Power Systems
- Security systems
- Solar/Wind systems

General Features

- 20 years designed floating life(25°C)
- Non-spillable construction
- Sealed and maintenance-free
- High reliability and stability
- High purity raw material: long life and low self-discharge

Standards

- Compliance with IEC, BS, JIS and EU standards
- UL, CE Certified
- ISO45001, ISO9001 and ISO14001 certified production facilities

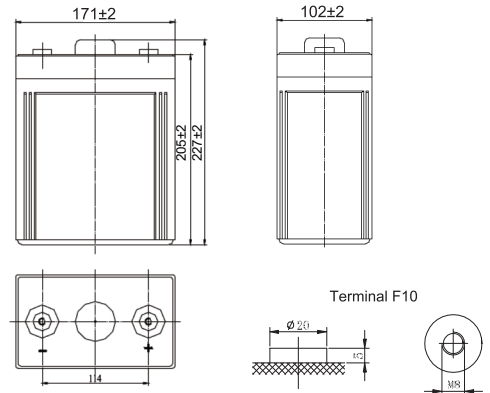
Specifications

Rated Voltage	2V	
Nominal Capacity	150Ah	(C ₁₀ , 1.8V)
Approx Weight	8.0kg±3%(17.6lbs)	
Terminal	F10	
Rated Capacity(25°C)	150 Ah	(10hr, 15A, 1.80V)
	133 Ah	(5hr, 26.6A, 1.75V)
	114 Ah	(3hr, 38A, 1.70V)
	95 Ah	(1hr, 95A, 1.60V)
Max. Discharge Current	750A(5s)	
Max. Charge Current	37.5A	
Internal Resistance(25°C)	Approx 4mΩ	
Operating Temp. Range	Discharge	-20~60°C (-4~140°F)
	Charge	-10~50°C (14~122°F)
	Storage	-20~60°C (-4~140°F)
Nominal operating temperature	25±5°C	
Charge Voltage @25°C(77°F)	Cycle Use	Initial Charging Current less than 37.5A. Voltage 2.4V~2.5V at 25°C(77°F)Temp. Coefficient -30mV/°C
	Standby Use	Initial Charging Current less than 37.5A. Voltage 2.25V~2.3V at 25°C(77°F)Temp. Coefficient -20mV/°C
Temperature effects on capacity	40°C (104°F)	103%
	25°C (77°F)	100%
	0°C (32°F)	86%
	-15°C (5°F)	65%
Self Discharge(25°C)	Capacity after 3 months storage	91%
	Capacity after 6 months storage	82%
	Capacity after 12 months storage	65%



Dimensions

unit:mm



Length	102±2mm (4.02 inches)
Width	171±2mm (6.73 inches)
Container Height	205±2mm (8.07 inches)
Total Height	227±2mm (8.94 inches)

Battery Construction

Component	Positive plate	Negative plate	Container	Safety valve	Terminal	Separator	Electrolyte
Raw material	Lead dioxide	Lead	ABS(UL94-HB) or FR(UL94-V0)	Rubber	Copper	Fiberglass	Sulfuric acid

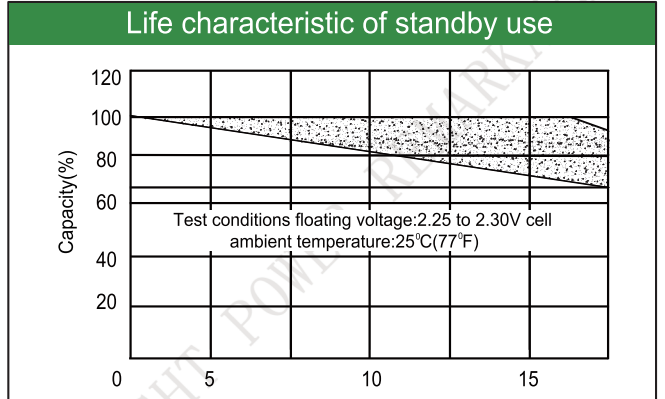
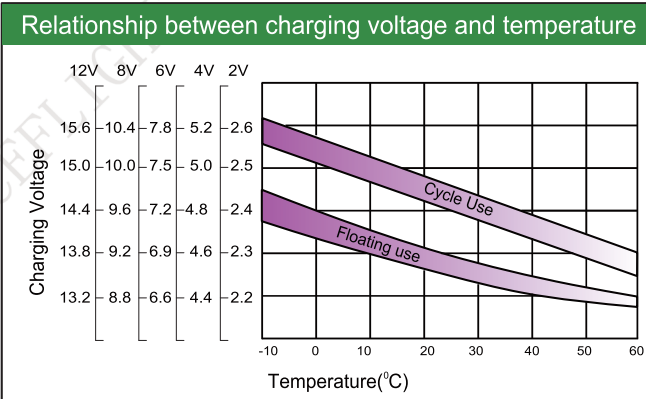
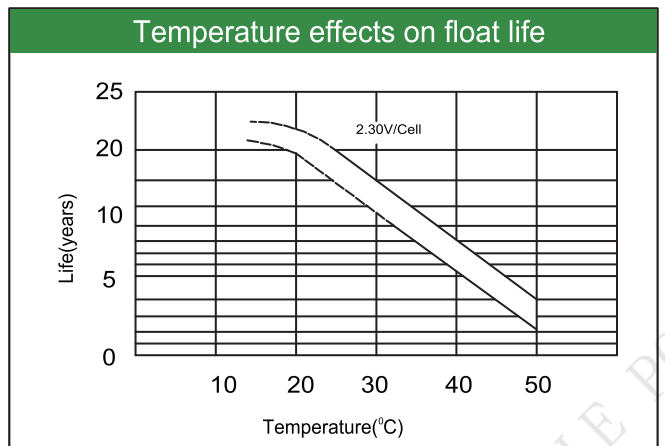
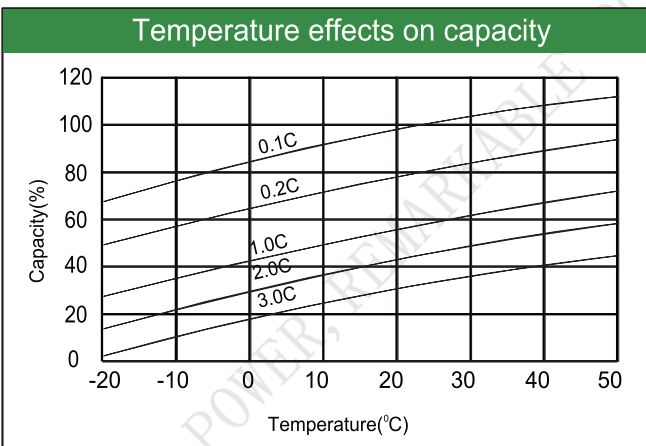
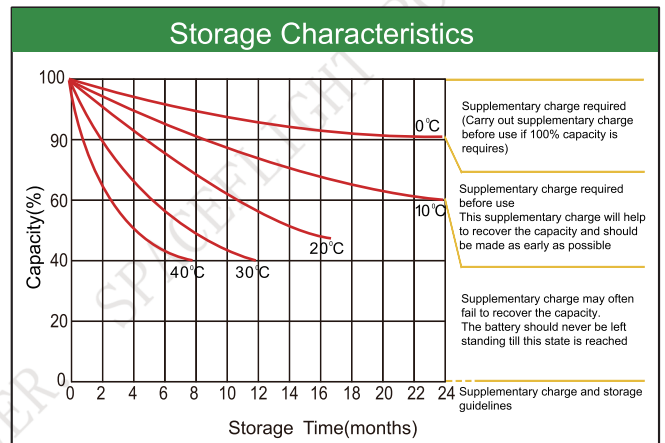
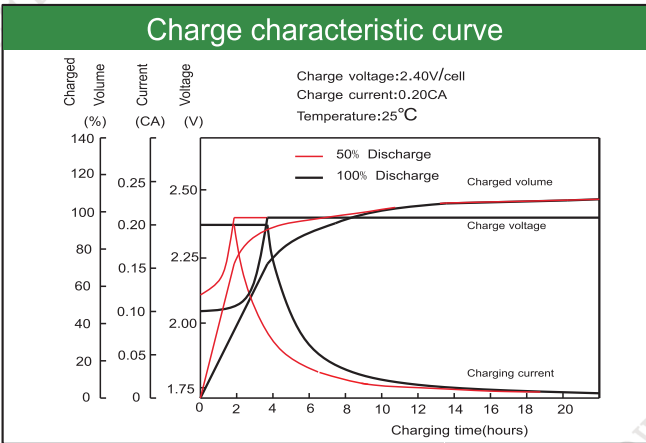
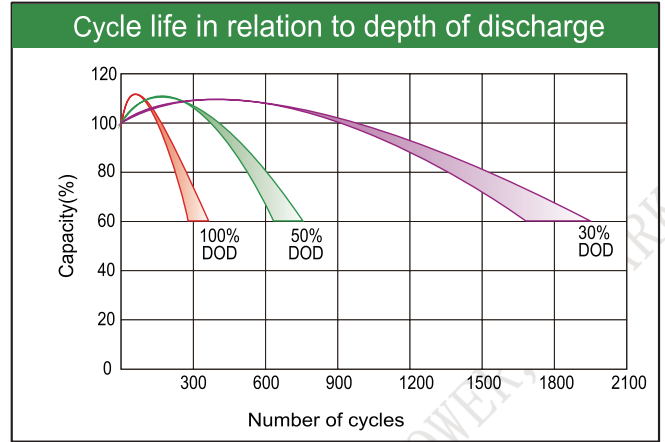
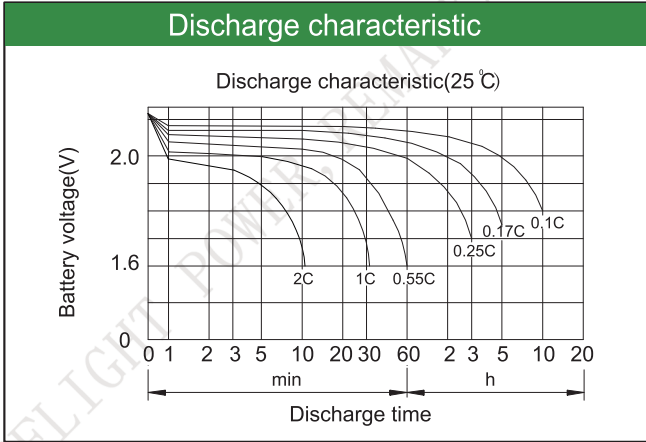
Constant Current Discharge (Amperes) at 25°C(77°F)

E.V/Time	5min	10min	15min	30min	45min	1h	3h	5h	10h
1.60V	/	345	262	145	119	95.0	40.7	28.7	15.8
1.65V	/	327	250	139	114	92.8	39.2	28.2	15.6
1.70V	/	309	238	132	109	89.0	38.0	27.4	15.4
1.75V	/	289	225	125	104	85.0	37.0	26.6	15.2
1.80V	/	270	210	118	98	81.0	35.0	25.5	15.0

Constant Power Discharge (Watts/cell) at 25°C(77°F)

E.V/Time	5min	10min	15min	30min	45min	1h	2h	3h	5h
1.60V	/	651	489	283	218	182	117	79.3	58.0
1.65V	/	615	460	275	207	174	113	77.4	57.0
1.70V	/	582	438	260	197	166	109	76.3	56.0
1.75V	/	546	418	245	186	158	105	73.0	55.0
1.80V	/	507	393	229	175	149	100	70.5	53.0

Note: The above characteristics data are average values obtained Within three charge/discharge cycles not the minimum.



Factory address: Fukang Industrial Zone, Longnan, Ganzhou, Jiangxi Province, China.
 Shenzhen Office: RM208-210, Building D, Tongju industrial Park, No.4, Longping West Road, Longgang District, Shenzhen.
 TEL: +86-755-28288189 sales@sfbattery.com www.sfbattery.com