

HTL Series Battery

SPACEFLIGHT HTL series battery is 2V Long Life lead acid battery which has been designed with special heavy duty grids and thicker plates which makes the battery provides consistent performance and longer service life at a critical application.

Applications

- Uninterruptible power supplies
- Telecommunication systems
- Communication equipments
- Emergency Power Systems
- Security systems
- Solar/Wind systems

General Features

- 20 years designed floating life(25°C)
- Non-spillable construction
- Sealed and maintenance-free
- High reliability and stability
- High purity raw material: long life and low self-discharge

Standards

- Compliance with IEC, BS, JIS and EU standards
- UL, CE Certified
- ISO45001,ISO9001 and ISO14001 certified production facilities

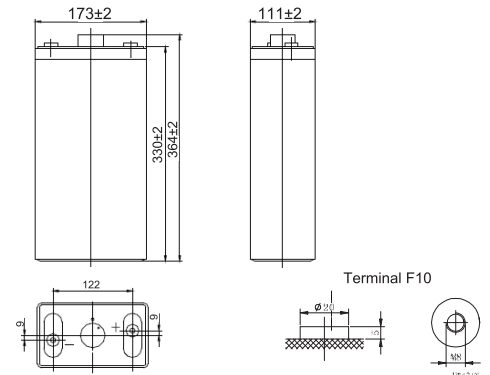
Specifications

Rated Voltage	2V	
Nominal Capacity	250Ah	(C ₁₀ , 1.8V)
Approx Weight	14.8kg±3%(32.63lbs)	
Terminal	F10	
Rated Capacity(25°C)	250 Ah	(10hr,25A,1.80V)
	215 Ah	(5hr,43A,1.75V)
	189 Ah	(3hr,63A,1.70V)
	153 Ah	(1hr,153A,1.60V)
Max.Discharge Current	1250A(5s)	
Max.Charge Current	62.5A	
Internal Resistance(25°C)	Approx 1mΩ	
Operating Temp.Range	Discharge	-20~60°C(-4~140°F)
	Charge	-10~50°C(14~122°F)
	Storage	-20~60°C(-4~140°F)
Nominal operating temperature	25±5°C	
Charge Voltage @25°C(77°F)	Cycle Use	Initial Charging Current less than 62.5A. Voltage 2.4V~2.5V at 25°C(77°F)Temp. Coefficient -30mV/°C
	Standby Use	Initial Charging Current less than 62.5A. Voltage 2.25V~2.3V at 25°C(77°F)Temp. Coefficient -20mV/°C
Temperature effects on capacity	40°C (104°F)	103%
	25°C (77°F)	100%
	0°C (32°F)	86%
	-15°C (5°F)	65%
Self Discharge(25°C)	Capacity after 3 months storage	91%
	Capacity after 6 months storage	82%
	Capacity after 12 months storage	65%



Dimensions

unit:mm



Length	111±2mm (4.37 inches)
Width	173±2mm (6.81 inches)
Container Height	330±2mm (13.0 inches)
Total Height	364±2mm (14.3 inches)

Battery Construction

Component	Positive plate	Negative plate	Container	Safety valve	Terminal	Separator	Electrolyte
Raw material	Lead dioxide	Lead	ABS(UL94-HB) or FR(UL94-V0)	Rubber	Copper	Fiberglass	Sulfuric acid

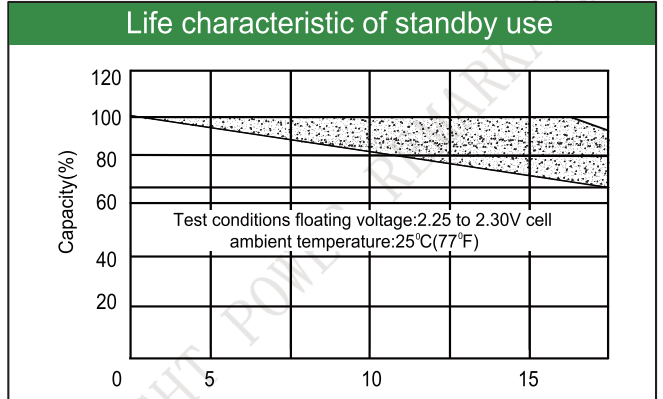
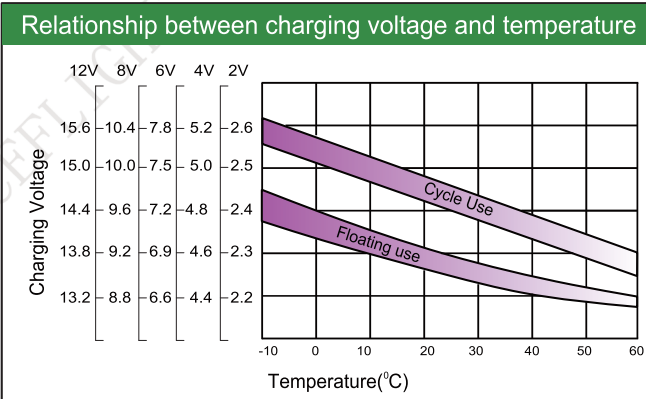
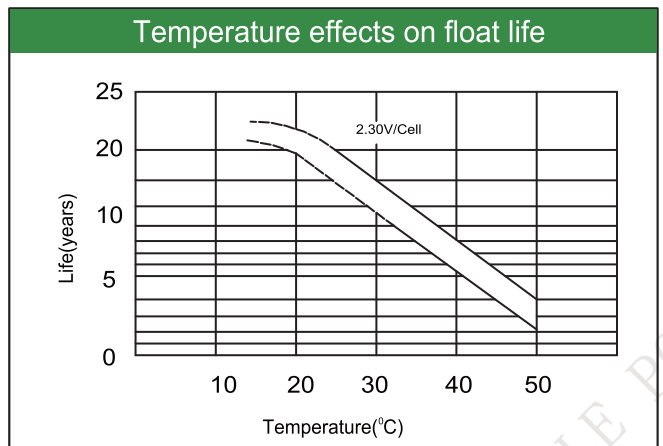
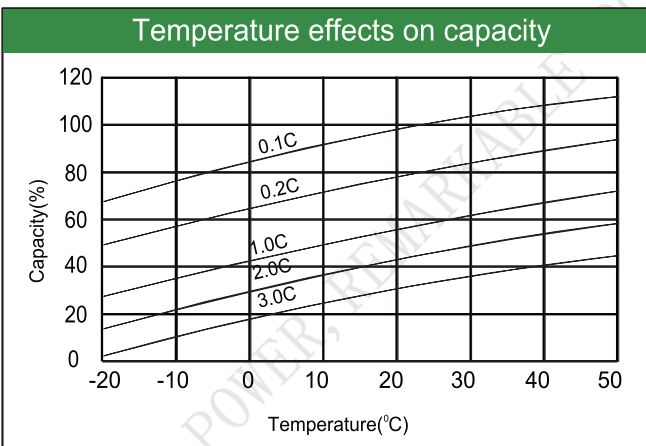
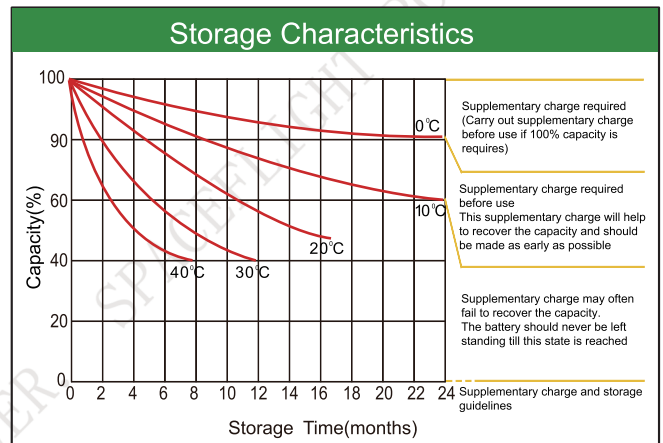
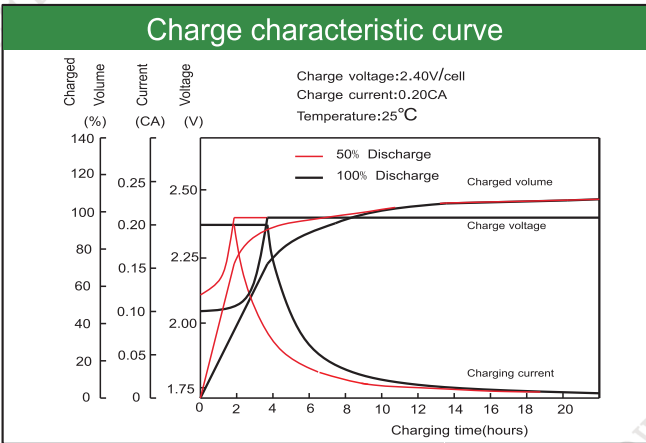
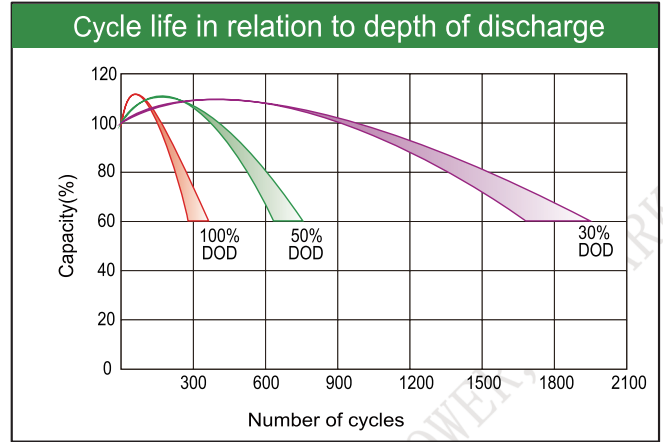
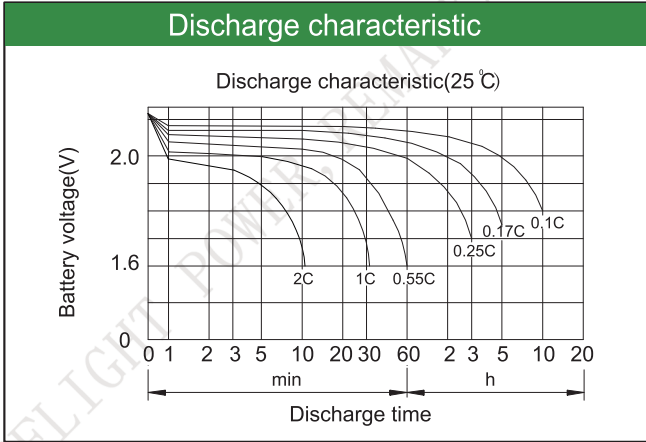
Constant Current Discharge (Amperes) at 25°C(77°F)

E.V/Time	5min	10min	15min	30min	45min	1h	3h	5h	10h
1.60V	/	479	368	257	200	153	66.5	45.3	26.4
1.65V	/	455	352	245	192	148	64.8	44.6	26.1
1.70V	/	432	338	233	183	143	63.0	43.8	25.8
1.75V	/	409	321	221	173	138	61.2	43.0	25.4
1.80V	/	380	305	208	165	132	59.0	42.0	25.0

Constant Power Discharge (Watts/cell) at 25°C(77°F)

E.V/Time	5min	10min	15min	30min	45min	1h	2h	3h	5h
1.60V	/	838	661	468	377	301	183	133	97.5
1.65V	/	798	636	445	360	294	178	130	95.8
1.70V	/	759	611	420	342	280	171	126	93.9
1.75V	/	720	586	396	323	266	165	123	91.9
1.80V	/	705	570	383	305	251	158	118	89.6

Note: The above characteristics data are average values obtained Within three charge/discharge cycles not the minimum.



Factory address: Fukang Industrial Zone, Longnan, Ganzhou, Jiangxi Province, China.
 Shenzhen Office: RM208-210, Building D, Tongju industrial Park, No.4, Longping West Road, Longgang District, Shenzhen.
 TEL: +86-755-28288189 sales@sfbattery.com www.sfbattery.com