

HTL Series Battery

SPACEFLIGHT HTL series battery is 2V Long Life lead acid battery which has been designed with special heavy duty grids and thicker plates which makes the battery provides consistent performance and longer service life at a critical application.

Applications

- Uninterruptible power supplies
- Telecommunication systems
- Communication equipments
- Emergency Power Systems
- Security systems
- Solar/Wind systems

General Features

- 20 years designed floating life(25°C)
- Non-spillable construction
- Sealed and maintenance-free
- High reliability and stability
- High purity raw material: long life and low self-discharge

Standards

- Compliance with IEC, BS, JIS and EU standards
- UL, CE Certified
- ISO45001,ISO9001 and ISO14001 certified production facilities

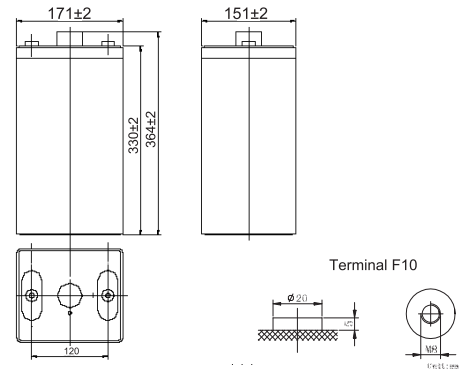
Specifications

Rated Voltage	2V	
Nominal Capacity	300Ah	(C ₁₀ , 1.8V)
Approx Weight	18.5kg±3%(40.8lbs)	
Terminal	F10	
Rated Capacity(25°C)	300 Ah	(10hr,30A,1.80V)
	270 Ah	(5hr,54A,1.75V)
	249 Ah	(3hr,83A,1.70V)
	190 Ah	(1hr,190A,1.60V)
Max.Discharge Current	1500A(5s)	
Max.Charge Current	75A	
Internal Resistance(25°C)	Approx 0.8mΩ	
Operating Temp.Range	Discharge	-20~60°C(-4~140°F)
	Charge	-10~50°C(14~122°F)
	Storage	-20~60°C(-4~140°F)
Nominal operating temperature	25±5°C	
Charge Voltage @25°C(77°F)	Cycle Use	Initial Charging Current less than 75A. Voltage 2.4V~2.5V at 25°C(77°F)Temp. Coefficient -30mV/°C
	Standby Use	Initial Charging Current less than 75A. Voltage 2.25V~2.3V at 25°C(77°F)Temp. Coefficient -20mV/°C
Temperature effects on capacity	40°C (104°F)	103%
	25°C (77°F)	100%
	0°C (32°F)	86%
	-15°C (5°F)	65%
Self Discharge(25°C)	Capacity after 3 months storage	91%
	Capacity after 6 months storage	82%
	Capacity after 12 months storage	65%



Dimensions

unit:mm



Length	151±2mm (5.94 inches)
Width	171±2mm (6.73 inches)
Container Height	330±2mm (13.0 inches)
Total Height	364±2mm (14.3 inches)

Battery Construction

Component	Positive plate	Negative plate	Container	Safety valve	Terminal	Separator	Electrolyte
Raw material	Lead dioxide	Lead	ABS(UL94-HB) or FR(UL94-V0)	Rubber	Copper	Fiberglass	Sulfuric acid

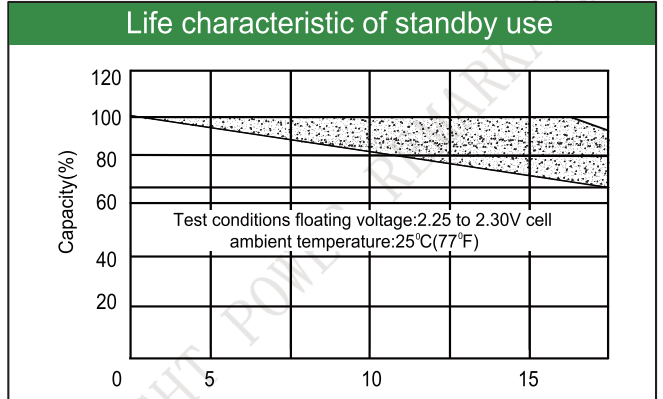
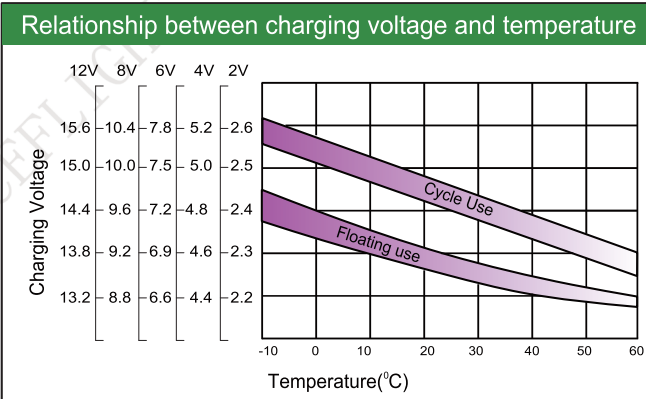
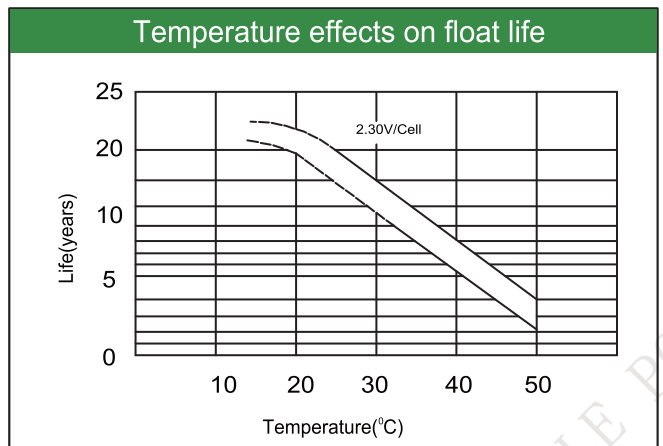
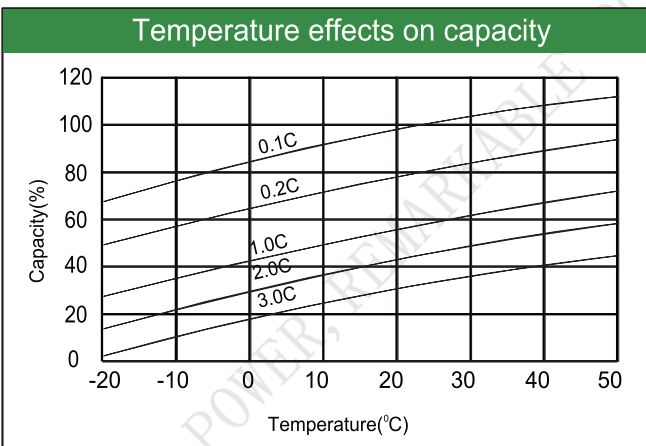
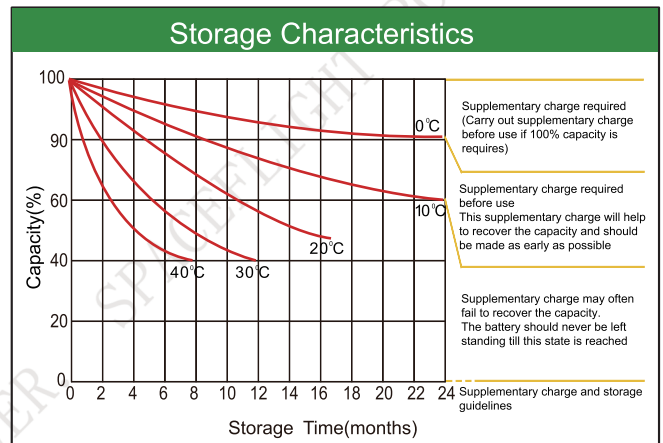
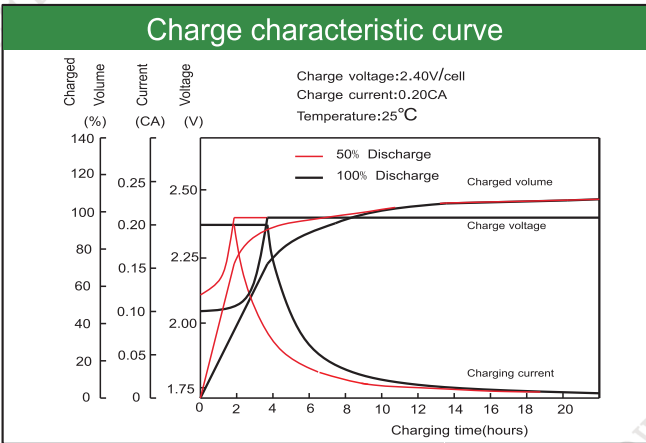
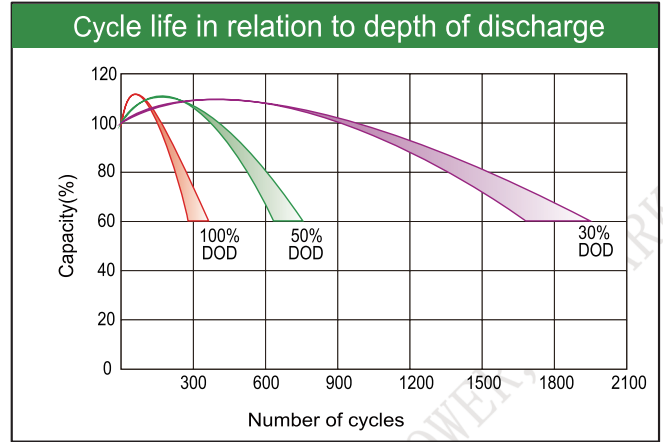
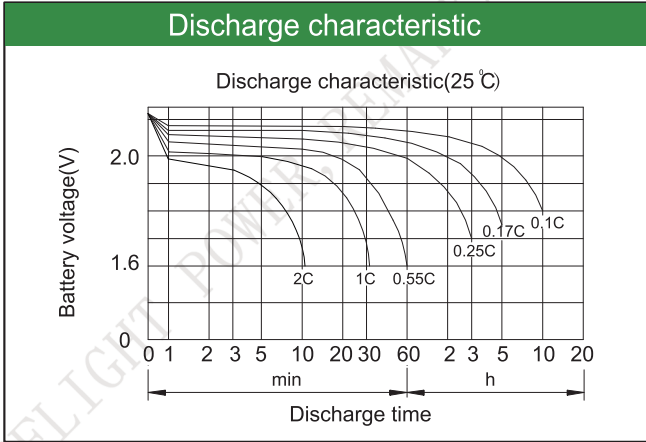
Constant Current Discharge (Amperes) at 25°C(77°F)

E.V/Time	5min	10min	15min	30min	45min	1h	3h	5h	10h
1.60V	/	575	442	308	240	190	89.0	58.3	32.1
1.65V	/	547	422	294	230	184	86.5	57.1	31.8
1.70V	/	519	405	280	220	178	83.0	55.6	31.3
1.75V	/	491	386	265	208	171	80.0	54.0	30.7
1.80V	/	456	367	250	198	163	76.0	52.0	30.0

Constant Power Discharge (Watts/cell) at 25°C(77°F)

E.V/Time	5min	10min	15min	30min	45min	1h	2h	3h	5h
1.60V	/	1005	793	562	453	371	247	175	115
1.65V	/	958	763	534	432	357	241	171	113
1.70V	/	911	733	505	410	342	234	166	111
1.75V	/	864	703	476	388	328	228	162	108
1.80V	/	847	684	460	366	316	221	157	105

Note: The above characteristics data are average values obtained Within three charge/discharge cycles not the minimum.



Factory address: Fukang Industrial Zone, Longnan, Ganzhou, Jiangxi Province, China.
 Shenzhen Office: RM208-210, Building D, Tongju industrial Park, No.4, Longping West Road, Longgang District, Shenzhen.
 TEL: +86-755-28288189 sales@sfbattery.com www.sfbattery.com