

HTL Series Battery

SPACEFLIGHT HTL series battery is 2V Long Life lead acid battery which has been designed with special heavy duty grids and thicker plates which makes the battery provides consistent performance and longer service life at a critical application.

Applications

- Uninterruptible power supplies
- Telecommunication systems
- Communication equipments
- Emergency Power Systems
- Security systems
- Solar/Wind systems

General Features

- 20 years designed floating life(25°C)
- Non-spillable construction
- Sealed and maintenance-free
- High reliability and stability
- High purity raw material: long life and low self-discharge

Standards

- Compliance with IEC, BS, JIS and EU standards
- UL, CE Certified
- ISO45001,ISO9001 and ISO14001 certified production facilities

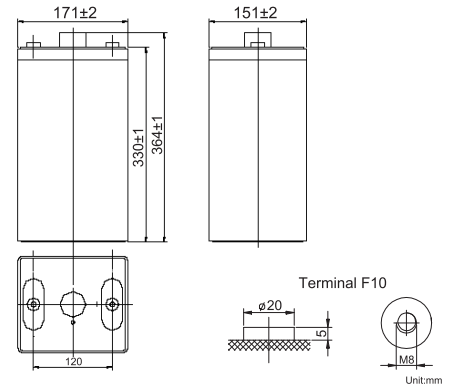
Specifications

Rated Voltage	2V	
Nominal Capacity	350Ah	(C ₁₀ ,1.8V)
Approx Weight	20kg±3%(44.09lbs)	
Terminal	F10	
Rated Capacity(25°C)	350 Ah	(10hr,35A,1.8V)
	305 Ah	(5hr,61A,1.75V)
	270 Ah	(3hr,90A,1.70V)
	215 Ah	(1hr,215A,1.60V)
Max.Discharge Current	1750A(5s)	
Max.Charge Current	87.5A	
Internal Resistance(25°C)	Approx 0.75mΩ	
Operating Temp.Range	Discharge	-20~60°C(-4~140°F)
	Charge	-10~50°C(14~122°F)
	Storage	-20~60°C(-4~140°F)
Nominal operating temperature	25±5°C	
Charge Voltage @25°C(77°F)	Cycle Use	Initial Charging Current less than 87.5A. Voltage 2.4V~2.5V at 25°C(77°F)Temp. Coefficient -30mV/°C
	Standby Use	Initial Charging Current less than 87.5A. Voltage 2.25V~2.3V at 25°C(77°F)Temp. Coefficient -20mV/°C
Temperature effects on capacity	40°C (104°F)	103%
	25°C (77°F)	100%
	0°C (32°F)	86%
	-15°C (5°F)	65%
Self Discharge(25°C)	Capacity after 3 months storage	91%
	Capacity after 6 months storage	82%
	Capacity after 12 months storage	65%



Dimensions

unit:mm



Length	151±2mm (5.94 inches)
Width	171±2mm (6.73 inches)
Container Height	330±2mm (13.0 inches)
Total Height	364±2mm (14.3 inches)

Battery Construction

Component	Positive plate	Negative plate	Container	Safety valve	Terminal	Separator	Electrolyte
Raw material	Lead dioxide	Lead	ABS(UL94-HB) or FR(UL94-V0)	Rubber	Copper	Fiberglass	Sulfuric acid

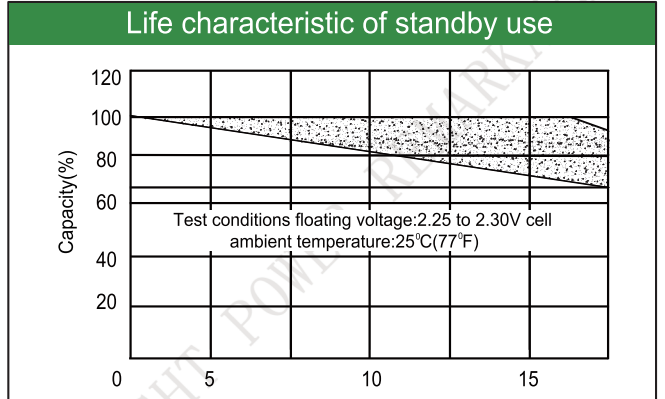
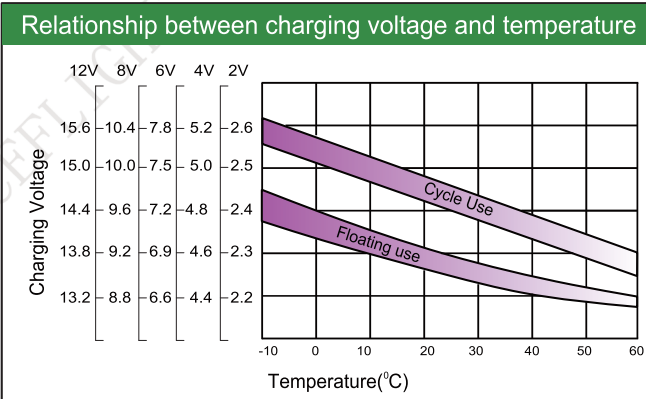
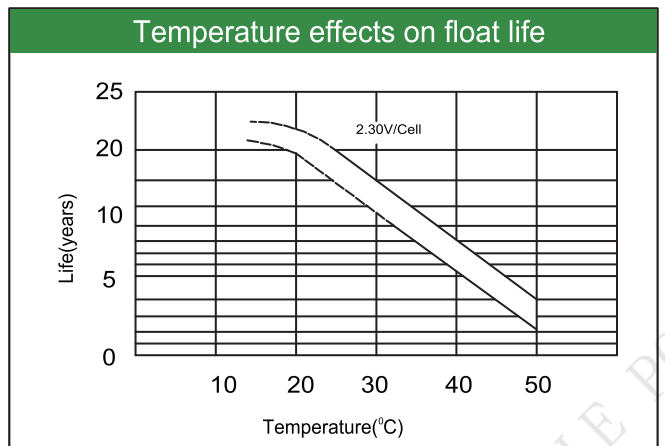
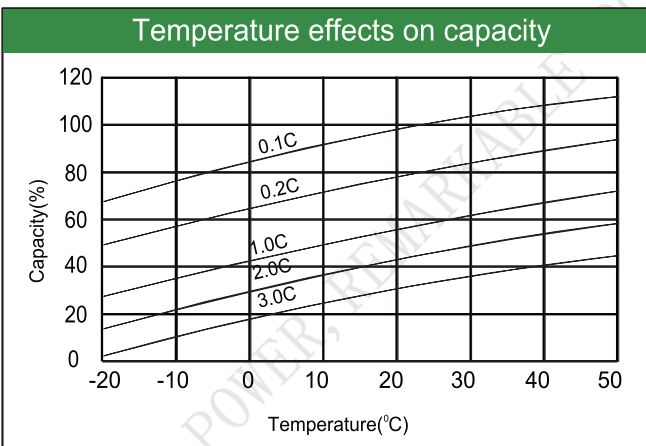
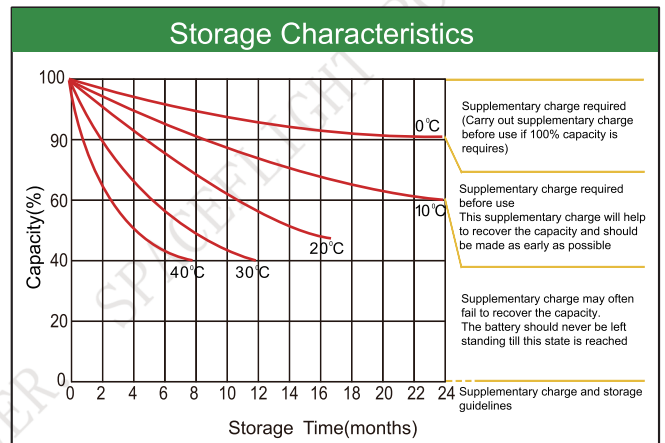
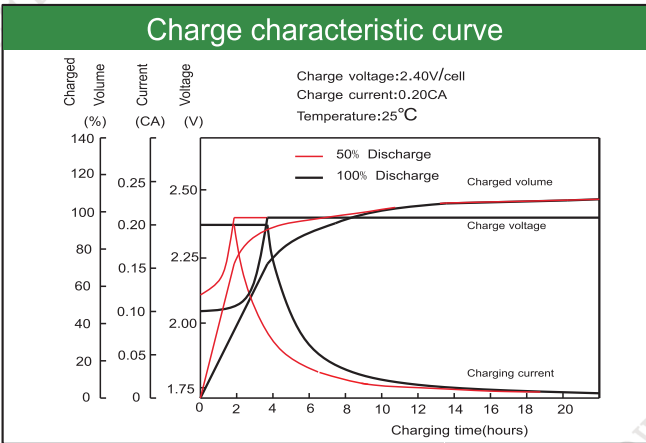
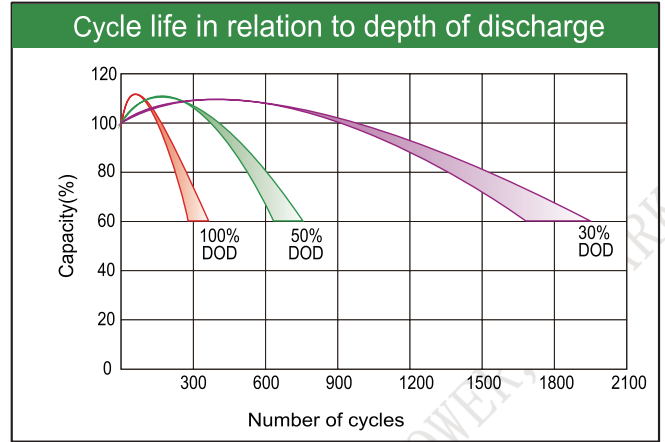
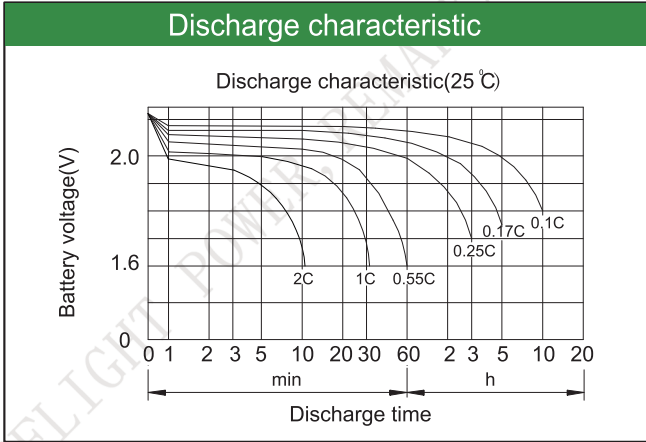
Constant Current Discharge (Amperes) at 25°C(77°F)

E.V/Time	5min	10min	15min	30min	45min	1h	3h	5h	10h
1.60V	/	670	515	359	279	215	97.5	66.0	37.2
1.65V	/	638	492	343	268	209	94.0	64.6	36.8
1.70V	/	605	473	327	257	203	90.0	62.8	36.3
1.75V	/	572	450	309	243	196	86.0	61.0	35.7
1.80V	/	531	428	292	230	188	81.0	59.0	35.0

Constant Power Discharge (Watts/cell) at 25°C(77°F)

E.V/Time	5min	10min	15min	30min	45min	1h	2h	3h	5h
1.60V	/	1173	925	655	528	426	284	201	132
1.65V	/	1118	890	622	504	410	277	196	130
1.70V	/	1062	855	589	478	393	269	191	127
1.75V	/	1007	820	555	453	377	261	186	124
1.80V	/	988	797	537	426	363	252	180	120

Note: The above characteristics data are average values obtained Within three charge/discharge cycles not the minimum.



Factory address: Fukang Industrial Zone, Longnan, Ganzhou, Jiangxi Province, China.
 Shenzhen Office: RM208-210, Building D, Tongju industrial Park, No.4, Longping West Road, Longgang District, Shenzhen.
 TEL: +86-755-28288189 sales@sfbattery.com www.sfbattery.com