

HTL Series Battery

SPACEFLIGHT HTL series battery is 2V Long Life lead acid battery which has been designed with special heavy duty grids and thicker plates which makes the battery provides consistent performance and longer service life at a critical application.

Applications

- Uninterruptible power supplies
- Telecommunication systems
- Communication equipments
- Emergency Power Systems
- Security systems
- Solar/Wind systems

General Features

- 20 years designed floating life(25°C)
- Non-spillable construction
- Sealed and maintenance-free
- High reliability and stability
- High purity raw material: long life and low self-discharge

Standards

- Compliance with IEC, BS, JIS and EU standards
- UL, CE Certified
- ISO45001,ISO9001 and ISO14001 certified production facilities

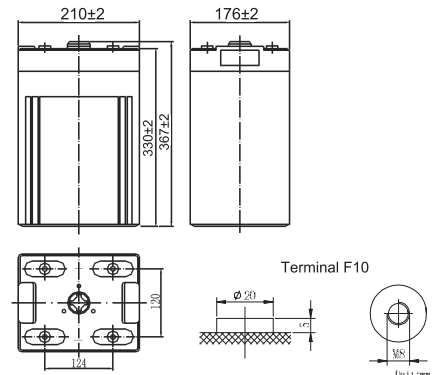
Specifications

Rated Voltage	2V	
Nominal Capacity	400Ah	(C ₁₀ , 1.8V)
Approx Weight	25.5kg±3%(56.2lbs)	
Terminal	F10	
Rated Capacity(25°C)	400 Ah	(10hr,40A,1.80V)
	350 Ah	(5hr,70A,1.75V)
	318 Ah	(3hr,106A,1.70V)
	245 Ah	(1hr,245A,1.60V)
Max.Discharge Current	2000A(5s)	
Max.Charge Current	100A	
Internal Resistance(25°C)	Approx 0.75mΩ	
Operating Temp.Range	Discharge	-20~60°C(-4~140°F)
	Charge	-10~50°C(14~122°F)
	Storage	-20~60°C(-4~140°F)
Nominal operating temperature	25±5°C	
Charge Voltage @25°C(77°F)	Cycle Use	Initial Charging Current less than 100A. Voltage 2.4V~2.5V at 25°C(77°F)Temp. Coefficient -30mV/°C
	Standby Use	Initial Charging Current less than 100A. Voltage 2.25V~2.3V at 25°C(77°F)Temp. Coefficient -20mV/°C
Temperature effects on capacity	40°C (104°F)	103%
	25°C (77°F)	100%
	0°C (32°F)	86%
	-15°C (5°F)	65%
Self Discharge(25°C)	Capacity after 3 months storage	91%
	Capacity after 6 months storage	82%
	Capacity after 12 months storage	65%



Dimensions

unit:mm



Length	210±2mm (8.27 inches)
Width	176±2mm (6.93 inches)
Container Height	330±2mm (13.0 inches)
Total Height	367±2mm (14.5 inches)

Battery Construction

Component	Positive plate	Negative plate	Container	Safety valve	Terminal	Separator	Electrolyte
Raw material	Lead dioxide	Lead	ABS(UL94-HB) or FR(UL94-V0)	Rubber	Copper	Fiberglass	Sulfuric acid

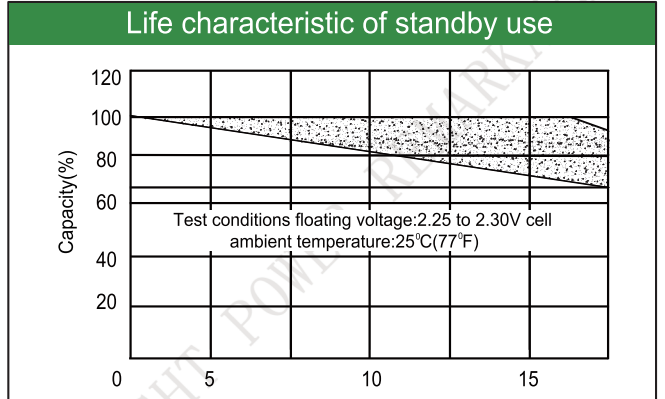
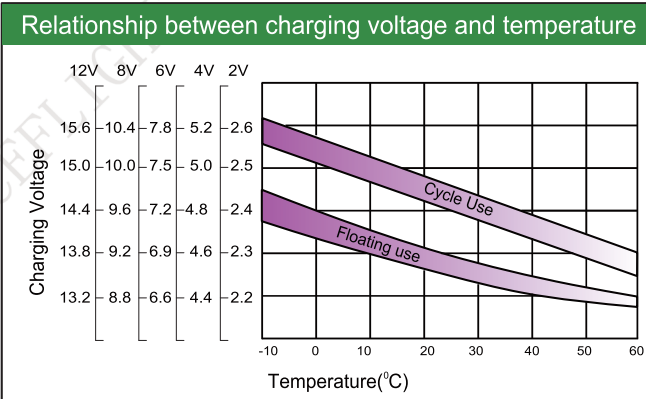
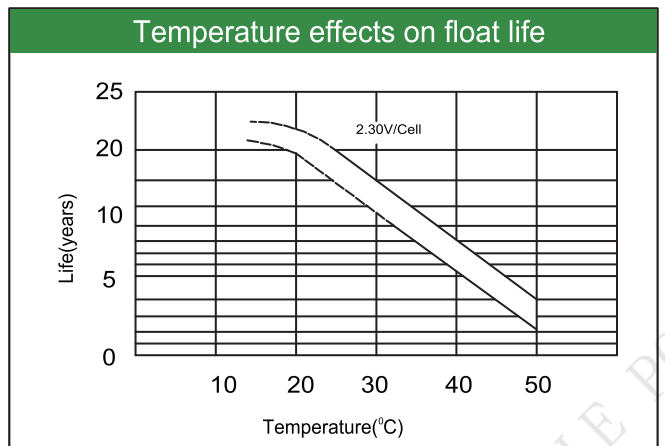
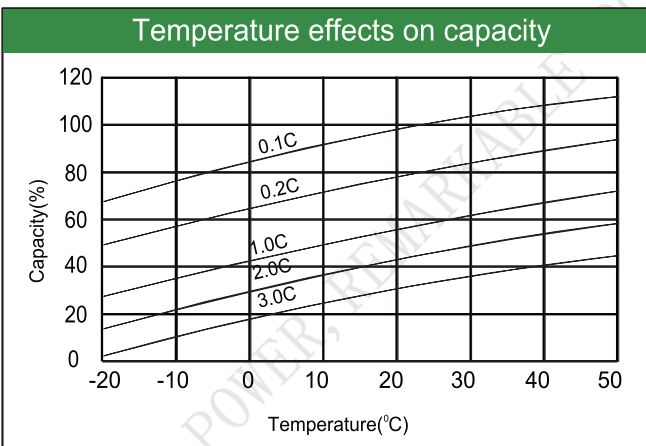
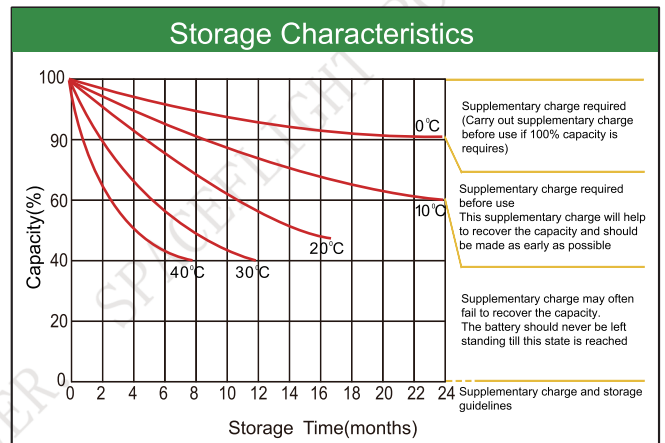
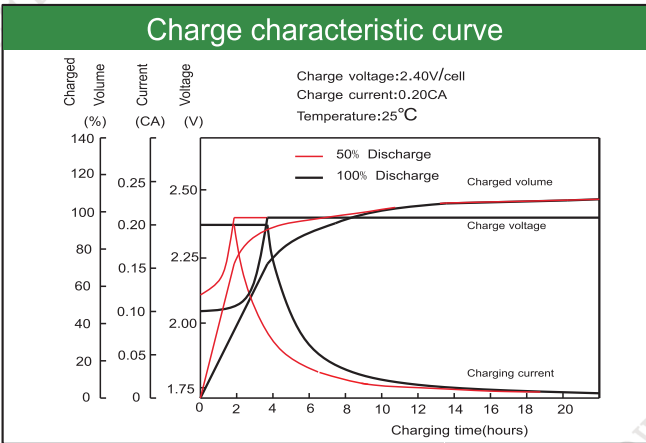
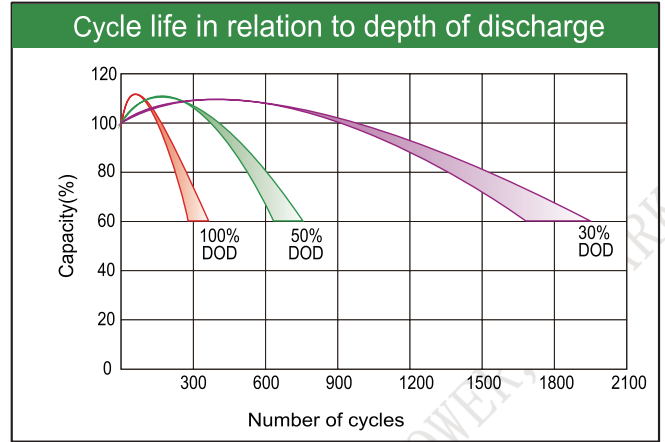
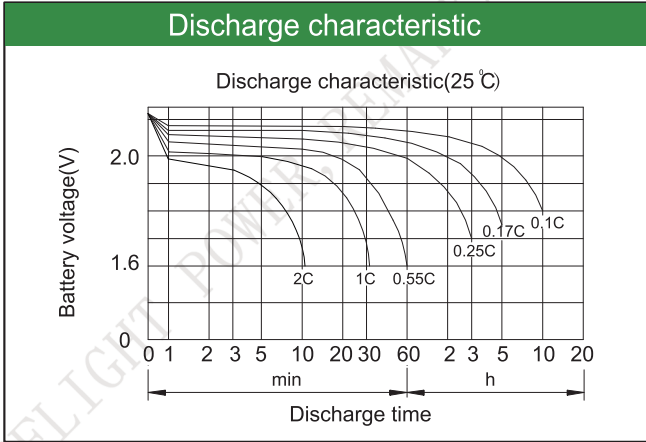
Constant Current Discharge (Amperes) at 25°C(77°F)

E.V/Time	5min	10min	15min	30min	45min	1h	3h	5h	10h
1.60V	/	766	589	411	319	245	114	75.5	43.0
1.65V	/	729	563	392	307	236	110	73.8	42.4
1.70V	/	691	540	373	293	227	106	71.8	41.7
1.75V	/	654	514	353	277	217	102	70.0	40.9
1.80V	/	607	489	333	263	206	98	67.0	40.0

Constant Power Discharge (Watts/cell) at 25°C(77°F)

E.V/Time	5min	10min	15min	30min	45min	1h	2h	3h	5h
1.60V	/	1340	1057	749	603	465	311	215	140
1.65V	/	1277	1017	711	576	442	288	210	138
1.70V	/	1214	977	673	547	427	272	204	135
1.75V	/	1151	937	634	517	405	262	198	132
1.80V	/	1129	911	613	487	392	246	188	125

Note: The above characteristics data are average values obtained Within three charge/discharge cycles not the minimum.



Factory address: Fukang Industrial Zone, Longnan, Ganzhou, Jiangxi Province, China.
 Shenzhen Office: RM208-210, Building D, Tongju industrial Park, No.4, Longping West Road, Longgang District, Shenzhen.
 TEL: +86-755-28288189 sales@sfbattery.com www.sfbattery.com