

HTL Series Battery

SPACEFLIGHT HTL series battery is 2V Long Life lead acid battery which has been designed with special heavy duty grids and thicker plates which makes the battery provides consistent performance and longer service life at a critical application.

Applications

- Uninterruptible power supplies
- Telecommunication systems
- Communication equipments
- Emergency Power Systems
- Security systems
- Solar/Wind systems

General Features

- 20 years designed floating life(25°C)
- Non-spillable construction
- Sealed and maintenance-free
- High reliability and stability
- High purity raw material: long life and low self-discharge

Standards

- Compliance with IEC, BS, JIS and EU standards
- UL, CE Certified
- ISO45001,ISO9001 and ISO14001 certified production facilities

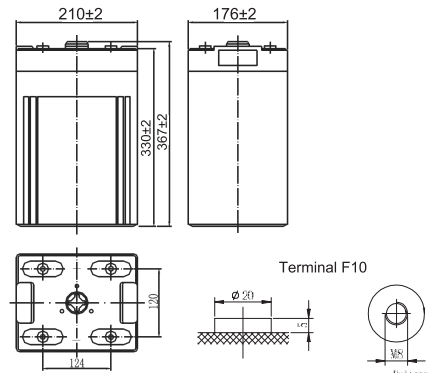
Specifications

Rated Voltage	2V	
Nominal Capacity	450Ah	(C ₁₀ ,1.8V)
Approx Weight	28kg±3%(61.7lbs)	
Terminal	F10	
Rated Capacity(25°C)	450 Ah	(10hr,45A,1.80V)
	405 Ah	(5hr,81A,1.75V)
	345 Ah	(3hr,115A,1.70V)
	270 Ah	(1hr,270A,1.60V)
Max.Discharge Current	2250A(5s)	
Max.Charge Current	112.5A	
Internal Resistance(25°C)	Approx 0.7mΩ	
Operating Temp.Range	Discharge	-20~60°C(-4~140°F)
	Charge	-10~50°C(14~122°F)
	Storage	-20~60°C(-4~140°F)
Nominal operating temperature	25±5°C	
Charge Voltage @25°C(77°F)	Cycle Use	Initial Charging Current less than 112.5A. Voltage 2.4V~2.5V at 25°C(77°F)Temp. Coefficient -30mV/°C
	Standby Use	Initial Charging Current less than 112.5A. Voltage 2.25V~2.3V at 25°C(77°F)Temp. Coefficient -20mV/°C
Temperature effects on capacity	40°C (104°F)	103%
	25°C (77°F)	100%
	0°C (32°F)	86%
	-15°C (5°F)	65%
Self Discharge(25°C)	Capacity after 3 months storage	91%
	Capacity after 6 months storage	82%
	Capacity after 12 months storage	65%



Dimensions

unit:mm



Length	210±2mm (8.27 inches)
Width	176±2mm (6.93 inches)
Container Height	330±2mm (13.0 inches)
Total Height	367±2mm (14.45 inches)

Battery Construction

Component	Positive plate	Negative plate	Container	Safety valve	Terminal	Separator	Electrolyte
Raw material	Lead dioxide	Lead	ABS(UL94-HB) or FR(UL94-V0)	Rubber	Copper	Fiberglass	Sulfuric acid

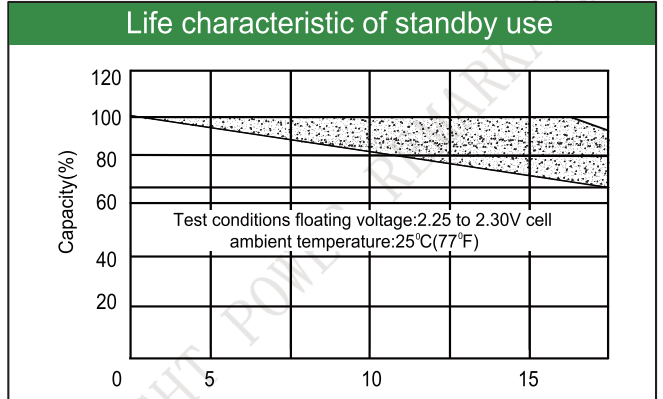
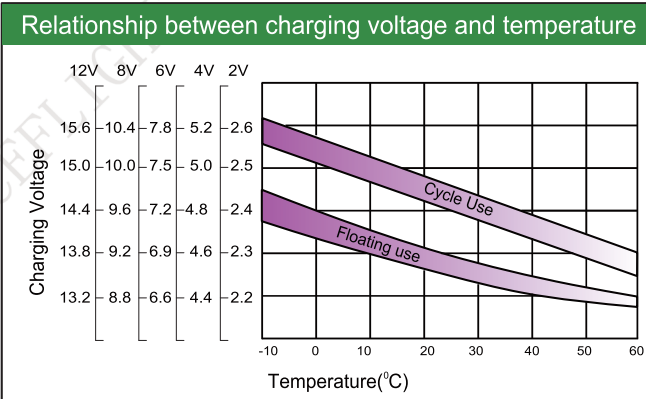
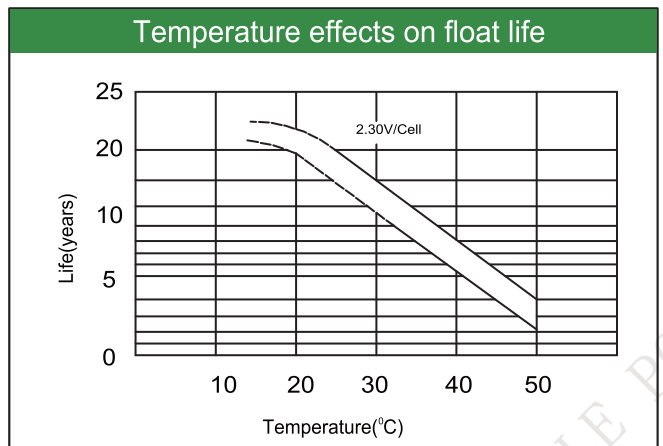
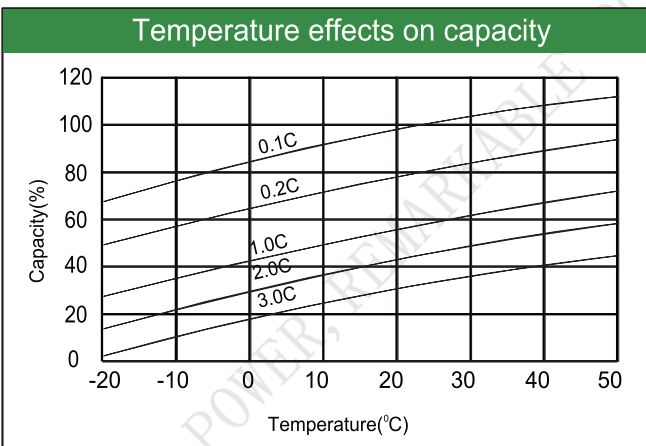
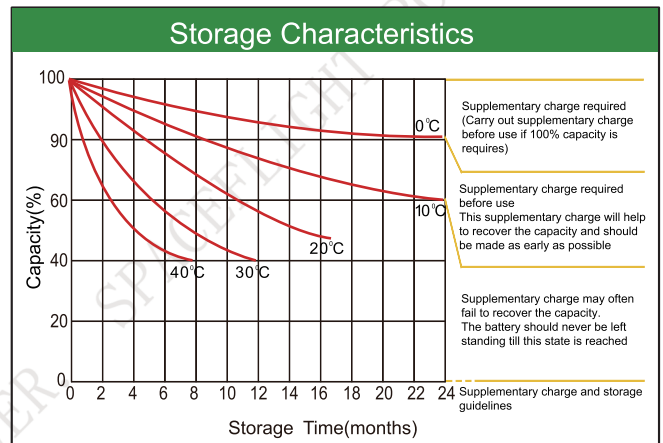
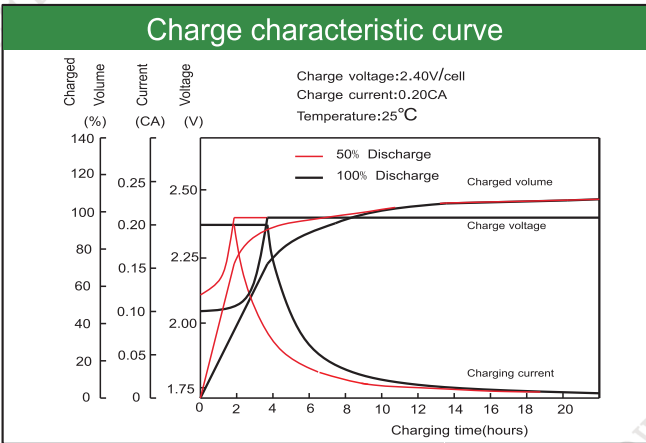
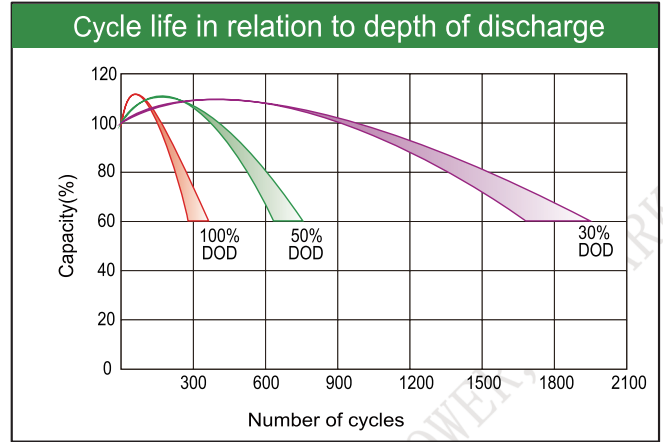
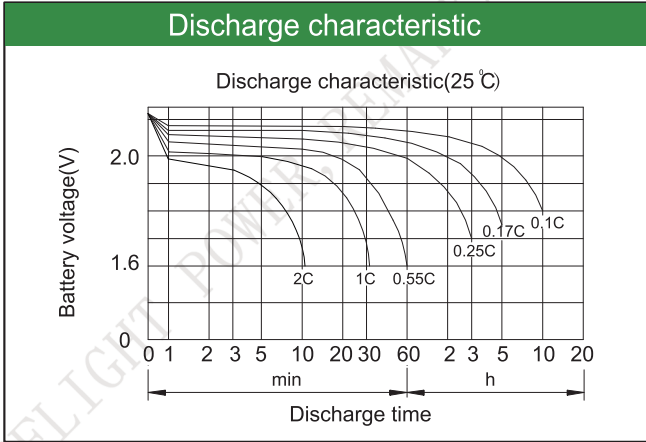
Constant Current Discharge (Amperes) at 25°C(77°F)

E.V/Time	5min	10min	15min	30min	45min	1h	3h	5h	10h
1.60V	/	862	662	462	359	270	123	85.2	47.0
1.65V	/	820	633	441	345	258	119	84.0	46.5
1.70V	/	778	608	420	330	246	115	82.5	46.0
1.75V	/	736	578	398	312	234	111	81.0	45.5
1.80V	/	683	550	375	296	220	106	79.5	45.0

Constant Power Discharge (Watts/cell) at 25°C(77°F)

E.V/Time	5min	10min	15min	30min	45min	1h	2h	3h	5h
1.60V	/	1508	1190	842	679	532	359	256	158
1.65V	/	1437	1145	800	648	510	342	247	155
1.70V	/	1366	1100	757	615	486	327	234	153
1.75V	/	1295	1055	713	582	462	317	224	149
1.80V	/	1270	1025	690	548	437	289	206	141

Note: The above characteristics data are average values obtained Within three charge/discharge cycles not the minimum.



Factory address: Fukang Industrial Zone, Longnan, Ganzhou, Jiangxi Province, China.
 Shenzhen Office: RM208-210, Building D, Tongju industrial Park, No.4, Longping West Road, Longgang District, Shenzhen.
 TEL: +86-755-28288189 sales@sfbattery.com www.sfbattery.com