

### HTL Series Battery

SPACEFLIGHT HTL series battery is 2V Long Life lead acid battery which has been designed with special heavy duty grids and thicker plates which makes the battery provides consistent performance and longer service life at a critical application.

### Applications

- Uninterruptible power supplies
- Telecommunication systems
- Communication equipments
- Emergency Power Systems
- Security systems
- Solar/Wind systems

### General Features

- 20 years designed floating life(25°C)
- Non-spillable construction
- Sealed and maintenance-free
- High reliability and stability
- High purity raw material: long life and low self-discharge

### Standards

- Compliance with IEC, BS, JIS and EU standards
- UL, CE Certified
- ISO45001,ISO9001 and ISO14001 certified production facilities

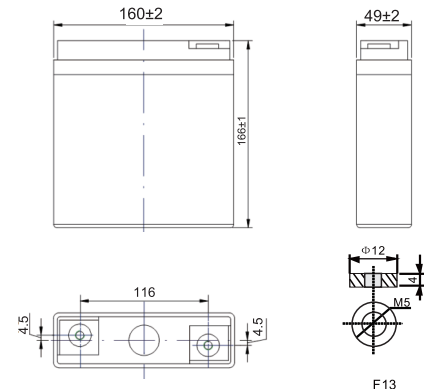
### Specifications

Rated Voltage	2V	
Nominal Capacity	50Ah	(C <sub>10</sub> ,1.8V)
Approx Weight	2.8kg±3%(6.17lbs)	
Terminal	F13	
Rated Capacity(25°C)	50 Ah	(10hr,5A,1.80V)
	44 Ah	(5hr,8.8A,1.75V)
	39 Ah	(3hr,13A,1.70V)
	31 Ah	(1hr,31A,1.60V)
Max.Discharge Current	250A(5s)	
Max.Charge Current	12.5A	
Internal Resistance(25°C)	Approx 2mΩ	
Operating Temp.Range	Discharge	-20~60°C(-4~140°F)
	Charge	-10~50°C(14~122°F)
	Storage	-20~60°C(-4~140°F)
Nominal operating temperature	25±5°C	
Charge Voltage @25°C(77°F)	Cycle Use	Initial Charging Current less than 12.5A. Voltage 2.4V~2.5V at 25°C(77°F)Temp. Coefficient -30mV/°C
	Standby Use	Initial Charging Current less than 12.5A. Voltage 2.25V~2.3V at 25°C(77°F)Temp. Coefficient -20mV/°C
Temperature effects on capacity	40°C (104°F)	103%
	25°C (77°F)	100%
	0°C (32°F)	86%
	-15°C (5°F)	65%
Self Discharge(25°C)	Capacity after 3 months storage	91%
	Capacity after 6 months storage	82%
	Capacity after 12 months storage	65%



### Dimensions

unit:mm



Length	160±2mm (6.29 inches)
Width	49±2mm (1.93 inches)
Container Height	166±2mm (6.54 inches)
Total Height	166±2mm (6.54 inches)

### Battery Construction

Component	Positive plate	Negative plate	Container	Safety valve	Terminal	Separator	Electrolyte
Raw material	Lead dioxide	Lead	ABS(UL94-HB) or FR(UL94-V0)	Rubber	Copper	Fiberglass	Sulfuric acid

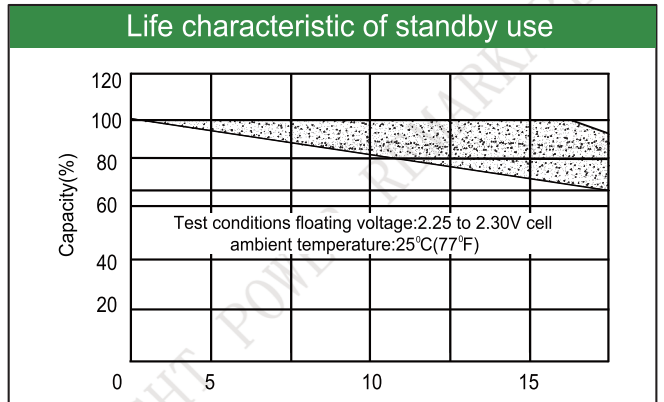
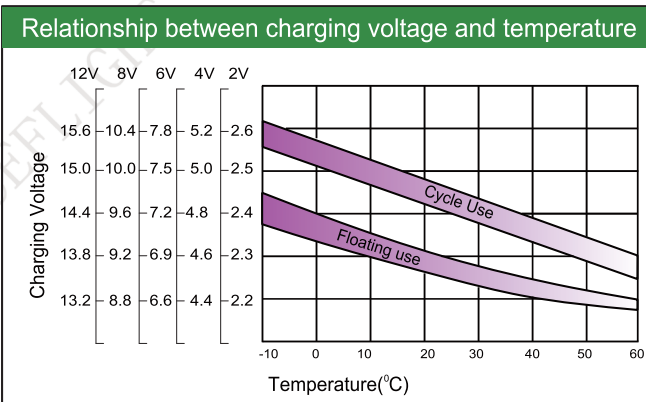
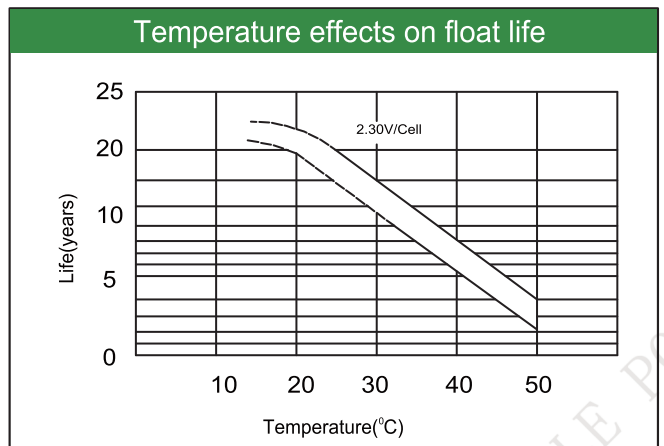
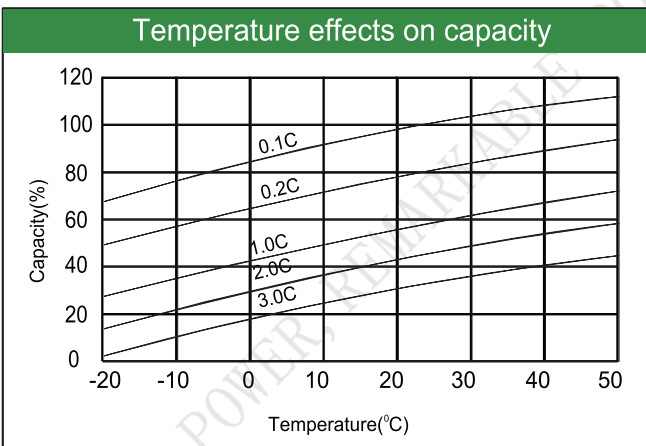
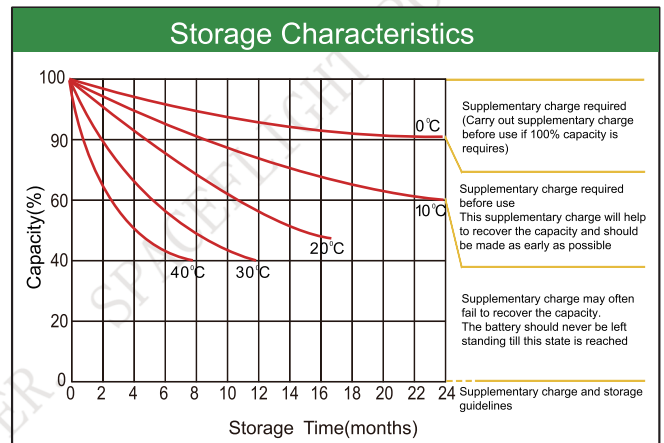
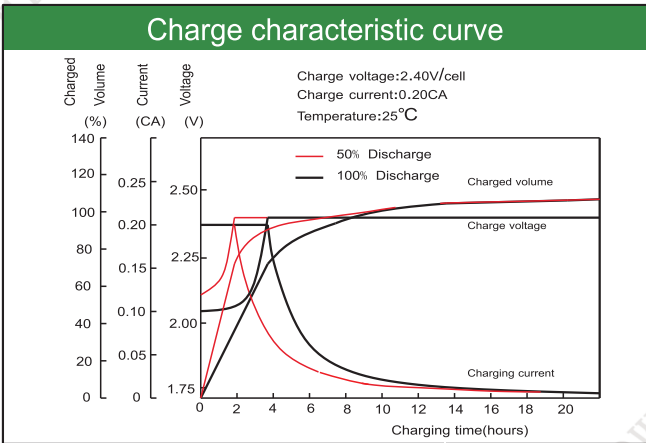
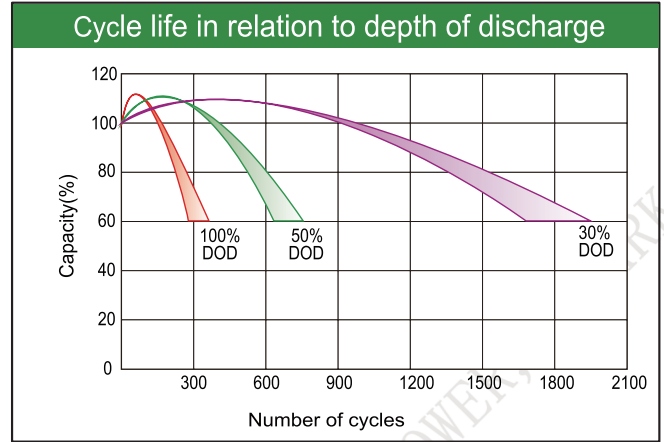
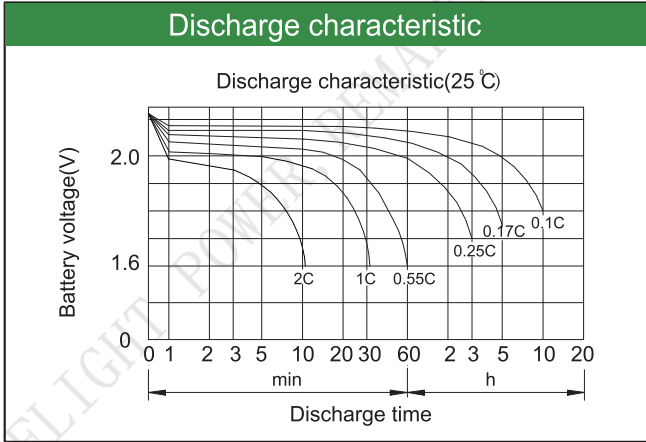
### Constant Current Discharge (Amperes) at 25°C(77°F)

E.V/Time	5min	10min	15min	30min	45min	1h	3h	5h	10h
1.60V	/	115	87.5	56.0	40.5	31.0	13.7	9.25	5.30
1.65V	/	109	83.5	54.1	39.0	30.1	13.4	9.15	5.25
1.70V	/	103	79.5	52.2	37.0	29.2	13.0	9.00	5.20
1.75V	/	96.5	75.0	50.3	35.5	28.2	12.6	8.80	5.10
1.80V	/	90.0	70.0	48.2	33.5	27.1	12.1	8.50	5.00

### Constant Power Discharge (Watts/cell) at 25°C(77°F)

E.V/Time	5min	10min	15min	30min	45min	1h	2h	3h	5h
1.60V	/	217	162	101	76.4	61.2	37.4	26.5	17.1
1.65V	/	205	154	99.2	74.9	59.9	36.6	25.9	16.9
1.70V	/	194	147	97.4	72.6	58.5	35.9	25.4	16.6
1.75V	/	182	140	95.6	69.8	56.3	34.9	24.8	16.4
1.80V	/	169	132	94.6	67.2	55.1	34.0	24.3	16.3

Note: The above characteristics data are average values obtained Within three charge/discharge cycles not the minimum.



Factory address: Fukang Industrial Zone, Longnan, Ganzhou, Jiangxi Province, China.  
 Shenzhen Office: RM208-210, Building D, Tongju industrial Park, No.4, Longping West Road, Longgang District, Shenzhen.  
 TEL: +86-755-28288189      [sales@sfbattery.com](mailto:sales@sfbattery.com)      [www.sfbattery.com](http://www.sfbattery.com)