

### HTL Series Battery

SPACEFLIGHT HTL series battery is 2V Long Life lead acid battery which has been designed with special heavy duty grids and thicker plates which makes the battery provides consistent performance and longer service life at a critical application.

### Applications

- Uninterruptible power supplies
- Telecommunication systems
- Communication equipments
- Emergency Power Systems
- Security systems
- Solar/Wind systems

### General Features

- 20 years designed floating life(25°C)
- Non-spillable construction
- Sealed and maintenance-free
- High reliability and stability
- High purity raw material: long life and low self-discharge

### Standards

- Compliance with IEC, BS, JIS and EU standards
- UL, CE Certified
- ISO45001,ISO9001 and ISO14001 certified production facilities

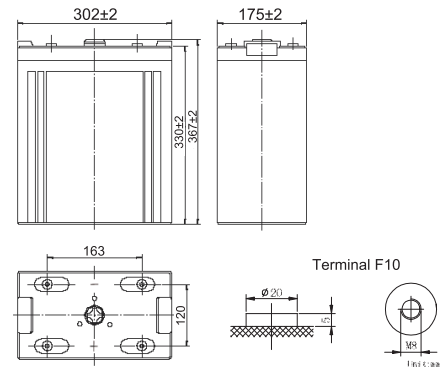
### Specifications

Rated Voltage	2V	
Nominal Capacity	600Ah	(C <sub>10</sub> , 1.8V)
Approx Weight	37kg±3%(81.5lbs)	
Terminal	F10	
Rated Capacity(25°C)	600 Ah	(10hr,60A,1.80V)
	530 Ah	(5hr,106A,1.75V)
	510 Ah	(3hr,170A,1.70V)
	364 Ah	(1hr,364A,1.60V)
Max.Discharge Current	3000A(5s)	
Max.Charge Current	150A	
Internal Resistance(25°C)	Approx 0.65mΩ	
Operating Temp.Range	Discharge	-20~60°C(-4~140°F)
	Charge	-10~50°C(14~122°F)
	Storage	-20~60°C(-4~140°F)
Nominal operating temperature	25±5°C	
Charge Voltage @25°C(77°F)	Cycle Use	Initial Charging Current less than 150A. Voltage 2.4V~2.5V at 25°C(77°F)Temp. Coefficient -30mV/°C
	Standby Use	Initial Charging Current less than 150A. Voltage 2.25V~2.3V at 25°C(77°F)Temp. Coefficient -20mV/°C
Temperature effects on capacity	40°C (104°F)	103%
	25°C (77°F)	100%
	0°C (32°F)	86%
	-15°C (5°F)	65%
Self Discharge(25°C)	Capacity after 3 months storage	91%
	Capacity after 6 months storage	82%
	Capacity after 12 months storage	65%



### Dimensions

unit:mm



Length	302±2mm (11.9 inches)
Width	175±2mm (6.89 inches)
Container Height	330±2mm (13.0 inches)
Total Height	367±2mm (14.45 inches)

### Battery Construction

Component	Positive plate	Negative plate	Container	Safety valve	Terminal	Separator	Electrolyte
Raw material	Lead dioxide	Lead	ABS(UL94-HB) or FR(UL94-V0)	Rubber	Copper	Fiberglass	Sulfuric acid

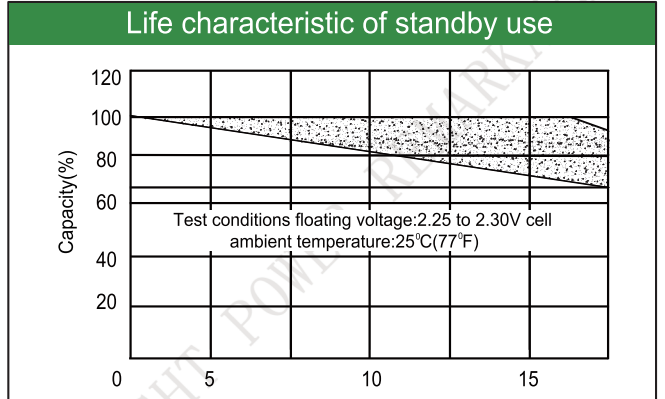
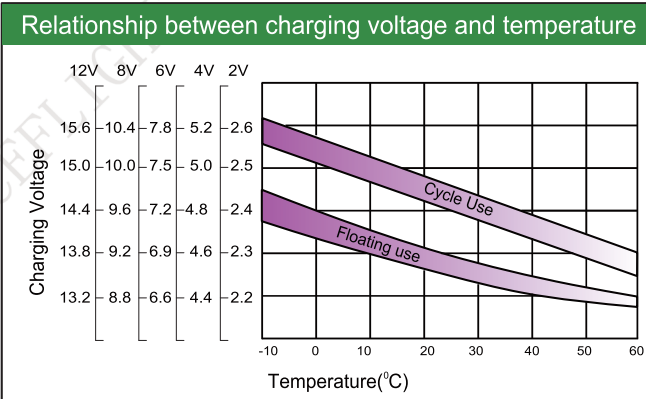
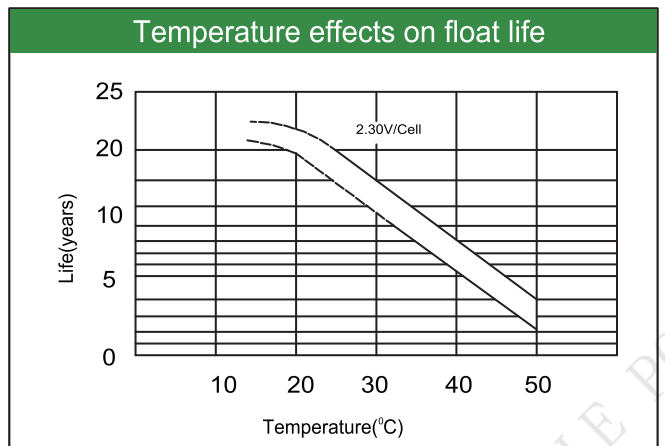
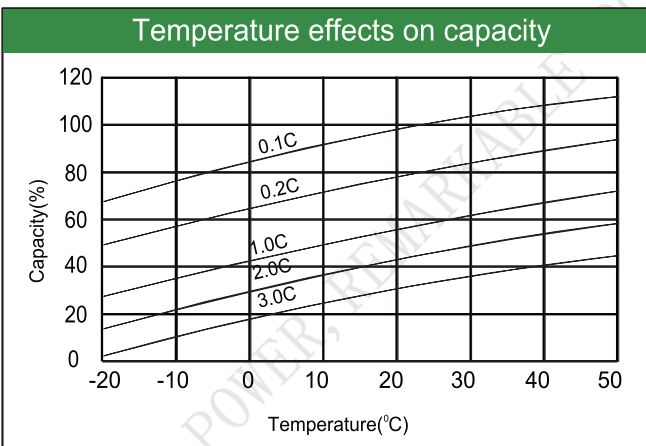
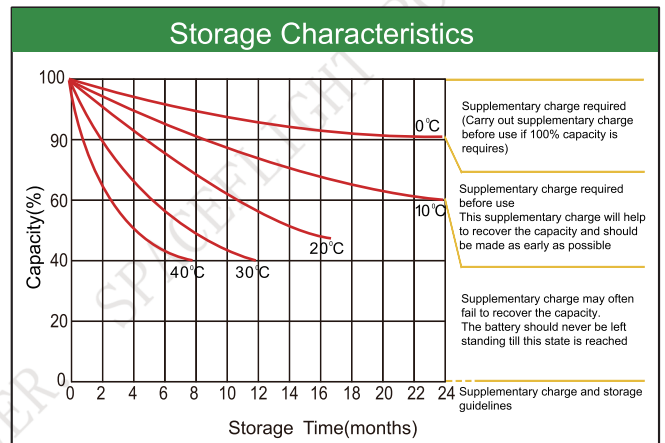
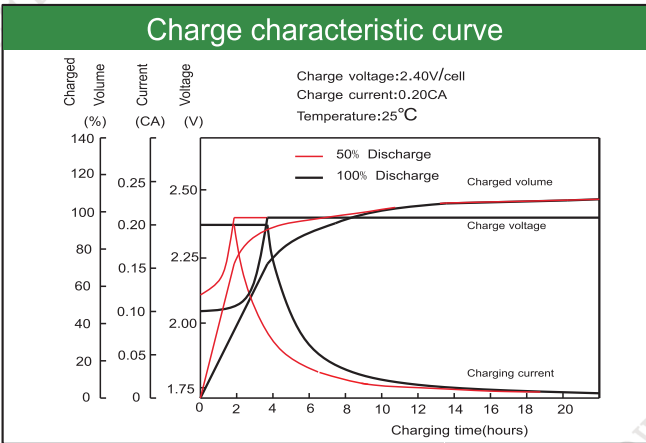
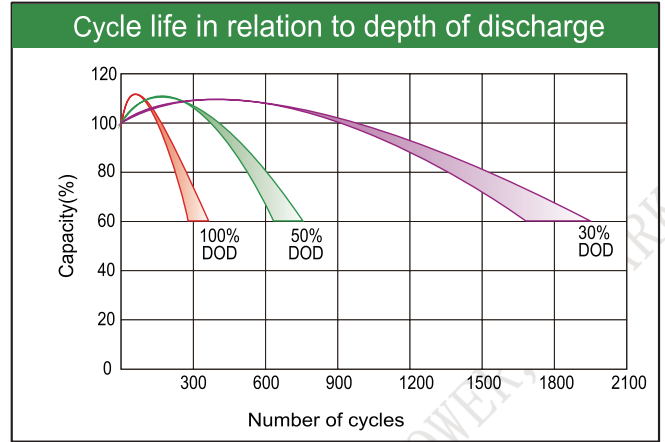
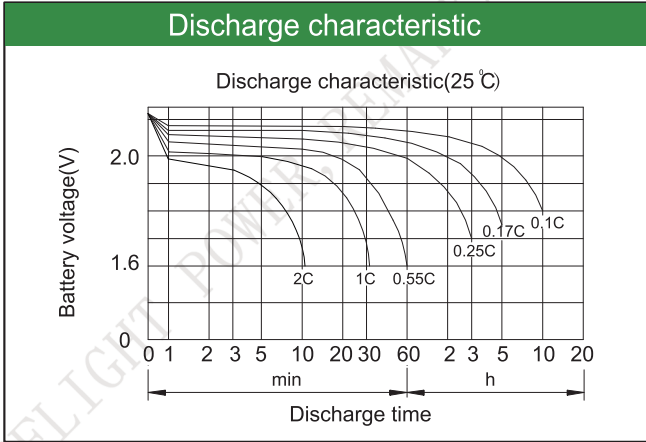
### Constant Current Discharge (Amperes) at 25°C(77°F)

E.V/Time	5min	10min	15min	30min	45min	1h	3h	5h	10h
1.60V	/	1149	883	616	479	364	180	113	64.0
1.65V	/	1093	844	588	460	351	175	111	63.2
1.70V	/	1037	810	560	440	337	170	109	62.0
1.75V	/	981	771	530	416	322	163	106	61.3
1.80V	/	911	733	500	395	307	156	103	60.0

### Constant Power Discharge (Watts/cell) at 25°C(77°F)

E.V/Time	5min	10min	15min	30min	45min	1h	2h	3h	5h
1.60V	/	2010	1586	1123	905	710	483	358	225
1.65V	/	1916	1526	1067	864	680	472	349	222
1.70V	/	1821	1466	1009	820	649	460	340	218
1.75V	/	1727	1406	951	776	617	446	330	214
1.80V	/	1663	1367	920	731	583	418	309	206

Note: The above characteristics data are average values obtained Within three charge/discharge cycles not the minimum.



Factory address: Fukang Industrial Zone, Longnan, Ganzhou, Jiangxi Province, China.  
 Shenzhen Office: RM208-210, Building D, Tongju industrial Park, No.4, Longping West Road, Longgang District, Shenzhen.  
 TEL: +86-755-28288189      [sales@sfbattery.com](mailto:sales@sfbattery.com)      [www.sfbattery.com](http://www.sfbattery.com)