

HTL Series Battery

SPACEFLIGHT HTL series battery is 2V Long Life lead acid battery which has been designed with special heavy duty grids and thicker plates which makes the battery provides consistent performance and longer service life at a critical application.

Applications

- Uninterruptible power supplies
- Telecommunication systems
- Communication equipments
- Emergency Power Systems
- Security systems
- Solar/Wind systems

General Features

- 20 years designed floating life(25°C)
- Non-spillable construction
- Sealed and maintenance-free
- High reliability and stability
- High purity raw material: long life and low self-discharge

Standards

- Compliance with IEC, BS, JIS and EU standards
- UL, CE Certified
- ISO45001,ISO9001 and ISO14001 certified production facilities

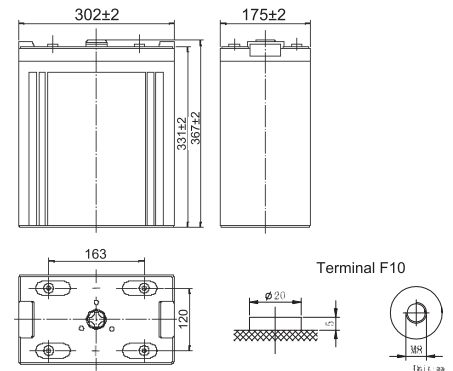
Specifications

Rated Voltage	2V	
Nominal Capacity	700Ah	(C ₁₀ , 1.8V)
Approx Weight	40kg±3%(88.2lbs)	
Terminal	F10	
Rated Capacity(25°C)	700 Ah	(10hr,70A,1.80V)
	625 Ah	(5hr,125A,1.75V)
	555 Ah	(3hr,185A,1.70V)
	450 Ah	(1hr,450A,1.60V)
Max.Discharge Current	3500A(5s)	
Max.Charge Current	175A	
Internal Resistance(25°C)	Approx 0.6mΩ	
Operating Temp.Range	Discharge	-20~60°C(-4~140°F)
	Charge	-10~50°C(14~122°F)
	Storage	-20~60°C(-4~140°F)
Nominal operating temperature	25±5°C	
Charge Voltage @25°C(77°F)	Cycle Use	Initial Charging Current less than 175A. Voltage 2.4V~2.5V at 25°C(77°F)Temp. Coefficient -30mV/°C
	Standby Use	Initial Charging Current less than 175A. Voltage 2.25V~2.3V at 25°C(77°F)Temp. Coefficient -20mV/°C
Temperature effects on capacity	40°C (104°F)	103%
	25°C (77°F)	100%
	0°C (32°F)	86%
	-15°C (5°F)	65%
Self Discharge(25°C)	Capacity after 3 months storage	91%
	Capacity after 6 months storage	82%
	Capacity after 12 months storage	65%



Dimensions

unit:mm



Length	302±2mm (11.9 inches)
Width	175±2mm (6.89 inches)
Container Height	331±2mm (13.0 inches)
Total Height	367±2mm (14.45 inches)

Battery Construction

Component	Positive plate	Negative plate	Container	Safety valve	Terminal	Separator	Electrolyte
Raw material	Lead dioxide	Lead	ABS(UL94-HB) or FR(UL94-V0)	Rubber	Copper	Fiberglass	Sulfuric acid

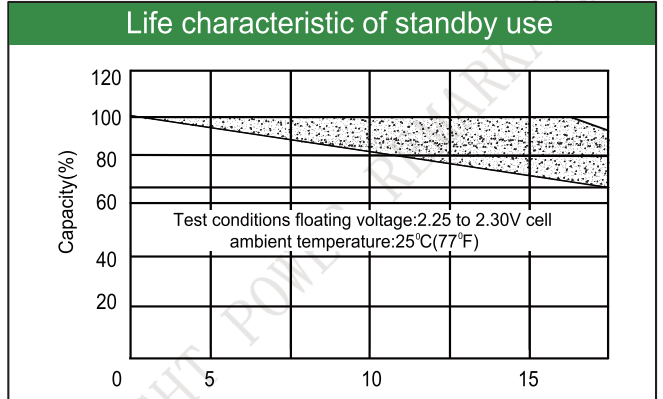
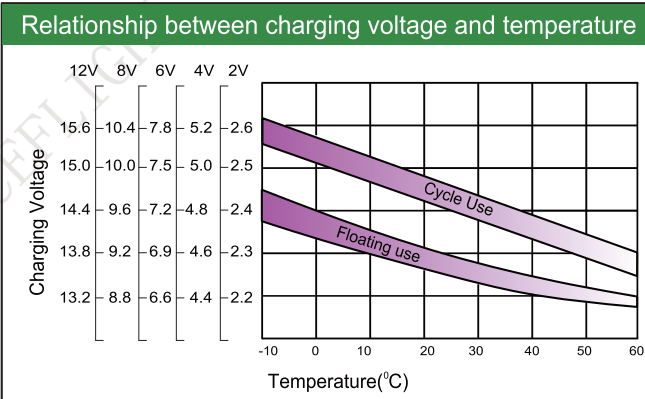
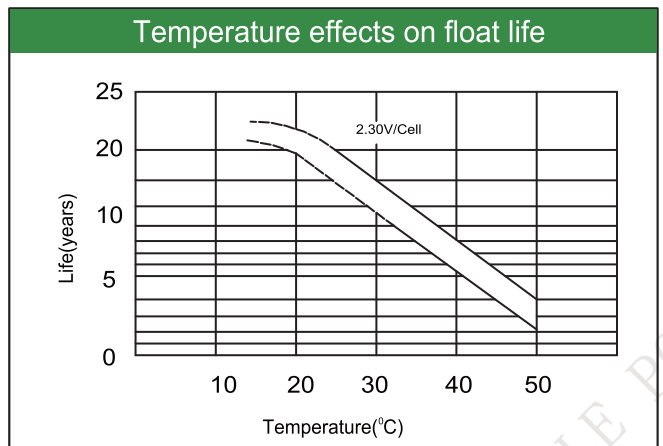
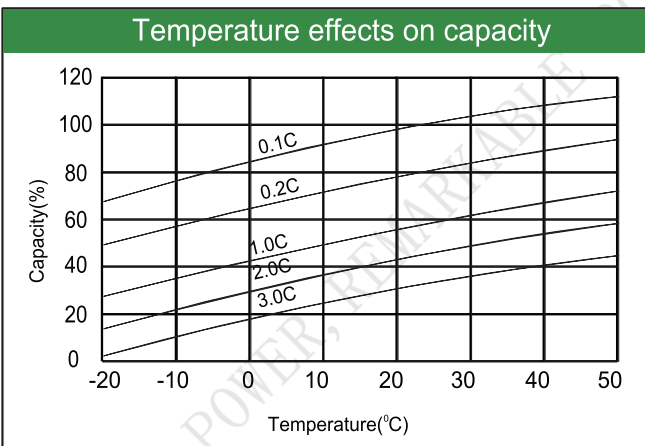
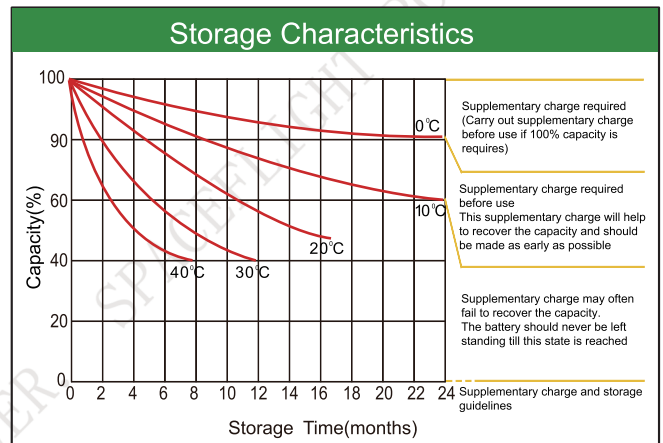
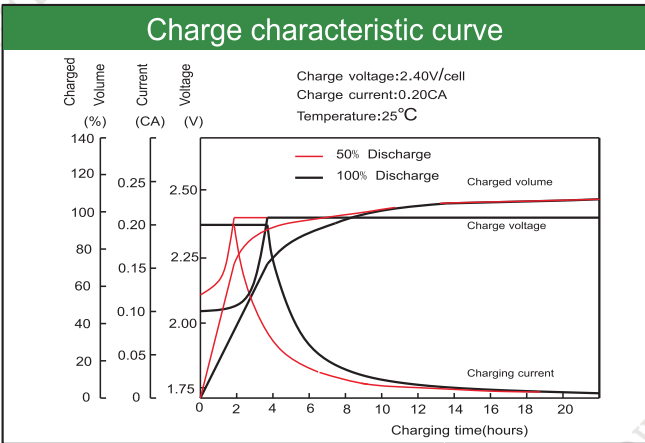
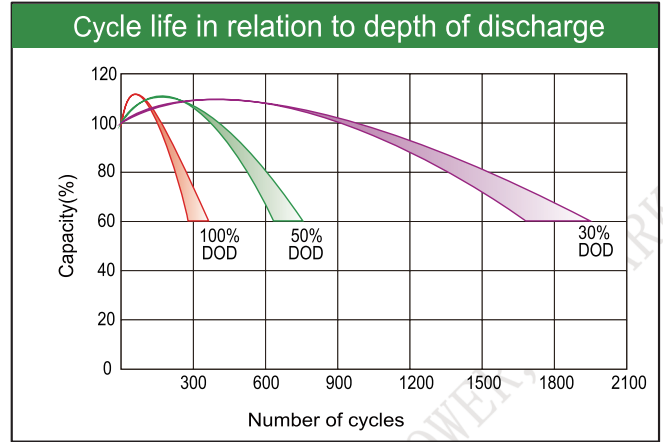
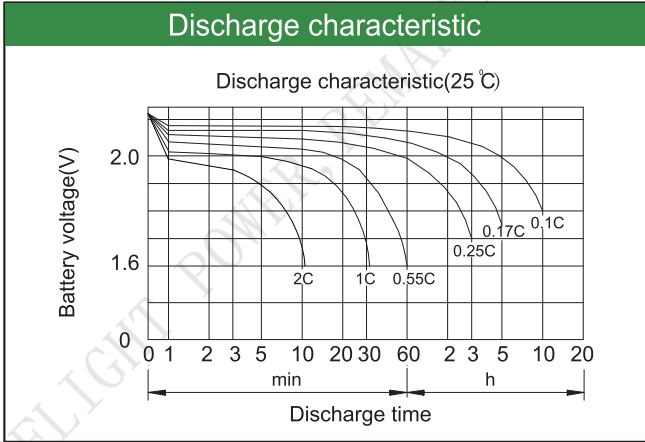
Constant Current Discharge (Amperes) at 25°C(77°F)

E.V/Time	5min	10min	15min	30min	45min	1h	3h	5h	10h
1.60V	/	1340	1030	740	555	450	195	131	74.2
1.65V	/	1275	985	710	535	435	190	129	73.4
1.70V	/	1210	945	680	515	420	185	127	73.2
1.75V	/	1145	900	650	495	405	180	125	72.3
1.80V	/	1075	855	610	472	388	174	122	70.0

Constant Power Discharge (Watts/cell) at 25°C(77°F)

E.V/Time	5min	10min	15min	30min	45min	1h	2h	3h	5h
1.60V	/	2345	1850	1340	1020	835	560	384	252
1.65V	/	2235	1780	1280	975	800	547	375	248
1.70V	/	2125	1710	1220	930	765	534	365	244
1.75V	/	2015	1640	1160	885	730	517	355	240
1.80V	/	1905	1560	1120	835	710	485	343	235

Note: The above characteristics data are average values obtained Within three charge/discharge cycles not the minimum.



Factory address: Fukang Industrial Zone, Longnan, Ganzhou, Jiangxi Province, China.
 Shenzhen Office: RM208-210, Building D, Tongju industrial Park, No.4, Longping West Road, Longgang District, Shenzhen.
 TEL: +86-755-28288189 sales@sfbattery.com www.sfbattery.com