

### HTL Series Battery

SPACEFLIGHT HTL series battery is 2V Long Life lead acid battery which has been designed with special heavy duty grids and thicker plates which makes the battery provides consistent performance and longer service life at a critical application.

### Applications

- Uninterruptible power supplies
- Telecommunication systems
- Communication equipments
- Emergency Power Systems
- Security systems
- Solar/Wind systems

### General Features

- 20 years designed floating life(25°C)
- Non-spillable construction
- Sealed and maintenance-free
- High reliability and stability
- High purity raw material: long life and low self-discharge

### Standards

- Compliance with IEC, BS, JIS and EU standards
- UL, CE Certified
- ISO45001, ISO9001 and ISO14001 certified production facilities

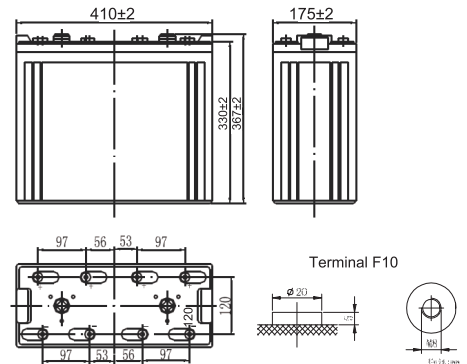
### Specifications

Rated Voltage	2V	
Nominal Capacity	800Ah	(C <sub>10</sub> , 1.8V)
Approx Weight	52kg±3%(114.6lbs)	
Terminal	F10	
Rated Capacity(25°C)	800 Ah	(10hr, 80A, 1.80V)
	710 Ah	(5hr, 142A, 1.75V)
	615 Ah	(3hr, 205A, 1.70V)
	495 Ah	(1hr, 495A, 1.60V)
Max. Discharge Current	4000A(5s)	
Max. Charge Current	200A	
Internal Resistance(25°C)	Approx 0.6mΩ	
Operating Temp. Range	Discharge	-20~60°C (-4~140°F)
	Charge	-10~50°C (14~122°F)
	Storage	-20~60°C (-4~140°F)
Nominal operating temperature	25±5°C	
Charge Voltage	Cycle Use	Initial Charging Current less than 200A. Voltage 2.4V~2.5V at 25°C(77°F)Temp. Coefficient -30mV/°C
	Standby Use	Initial Charging Current less than 200A. Voltage 2.25V~2.3V at 25°C(77°F)Temp. Coefficient -20mV/°C
Temperature effects on capacity	40°C (104°F)	103%
	25°C (77°F)	100%
	0°C (32°F)	86%
	-15°C (5°F)	65%
Self Discharge(25°C)	Capacity after 3 months storage	91%
	Capacity after 6 months storage	82%
	Capacity after 12 months storage	65%



### Dimensions

unit:mm



Length	410±2mm (16.14 inches)
Width	175±2mm (6.89 inches)
Container Height	330±2mm (13.0 inches)
Total Height	367±2mm (14.45 inches)

### Battery Construction

Component	Positive plate	Negative plate	Container	Safety valve	Terminal	Separator	Electrolyte
Raw material	Lead dioxide	Lead	ABS(UL94-HB) or FR(UL94-V0)	Rubber	Copper	Fiberglass	Sulfuric acid

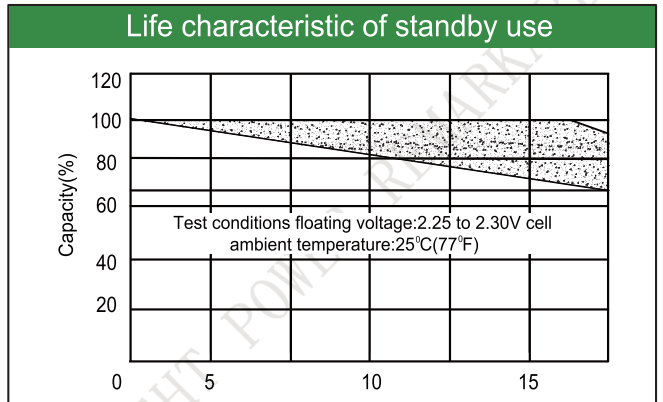
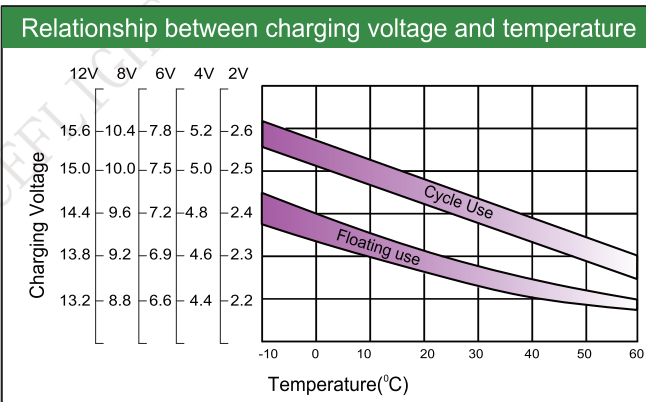
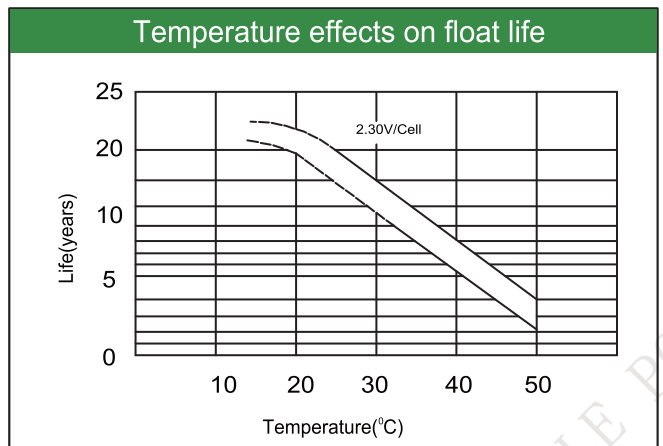
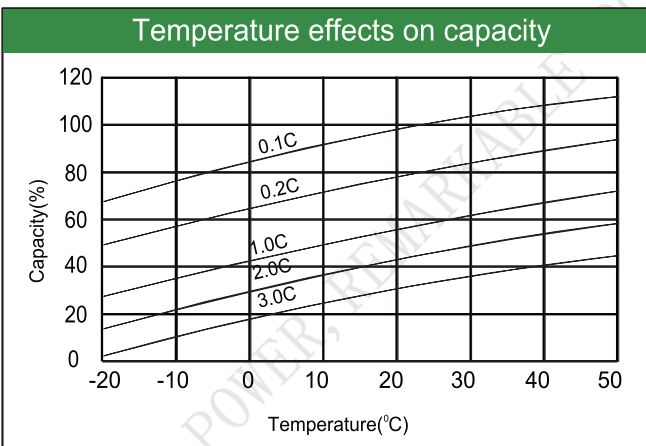
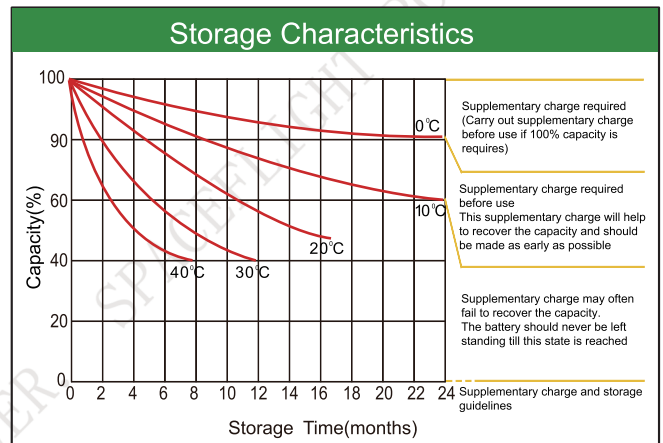
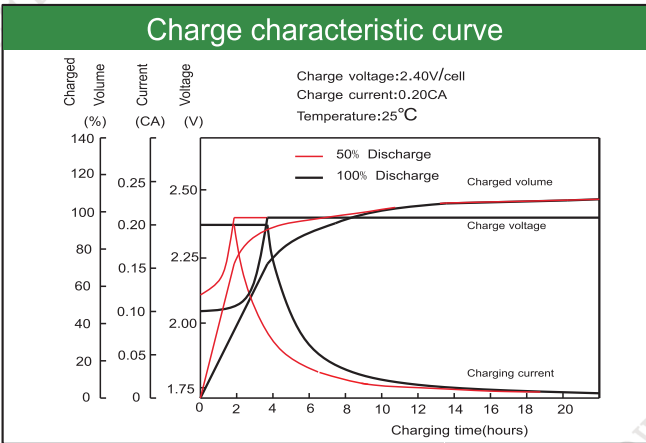
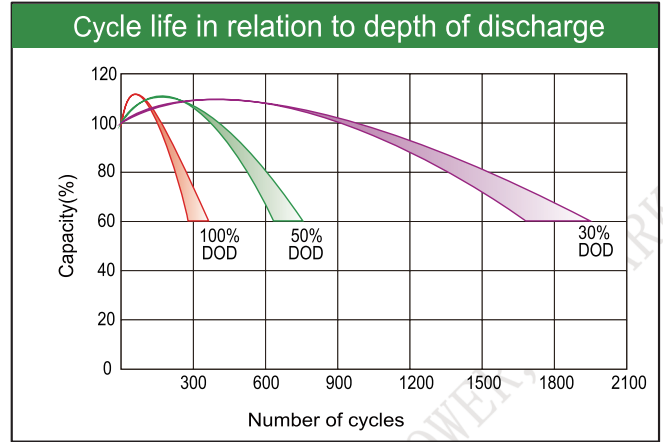
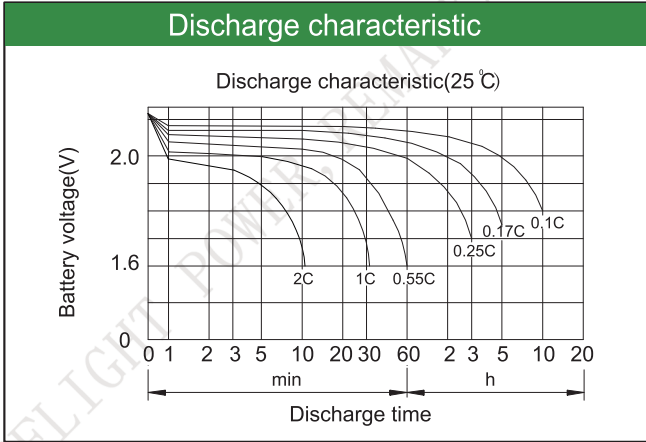
### Constant Current Discharge (Amperes) at 25°C(77°F)

E.V/Time	5min	10min	15min	30min	45min	1h	3h	5h	10h
1.60V	/	1477	1283	828	649	495	220	154	85.5
1.65V	/	1401	1221	791	622	476	213	150	84.1
1.70V	/	1323	1157	752	595	456	205	146	82.8
1.75V	/	1239	1091	714	566	436	199	142	81.5
1.80V	/	1157	1026	660	515	415	193	137	80.0

### Constant Power Discharge (Watts/cell) at 25°C(77°F)

E.V/Time	5min	10min	15min	30min	45min	1h	2h	3h	5h
1.60V	/	2405	2124	1497	1133	936	632	451	303
1.65V	/	2363	2054	1422	1081	896	613	432	298
1.70V	/	2287	1997	1346	1027	855	594	413	292
1.75V	/	2201	1945	1267	971	812	575	394	286
1.80V	/	2117	1889	1205	935	769	556	375	271

Note: The above characteristics data are average values obtained Within three charge/discharge cycles not the minimum.



Factory address: Fukang Industrial Zone, Longnan, Ganzhou, Jiangxi Province, China.  
 Shenzhen Office: RM208-210, Building D, Tongju industrial Park, No.4, Longping West Road, Longgang District, Shenzhen.  
 TEL: +86-755-28288189      [sales@sfbattery.com](mailto:sales@sfbattery.com)      [www.sfbattery.com](http://www.sfbattery.com)