

### HTG Series Battery

SPACEFLIGHT HTG Series Battery is hybrid GEL battery designed with deep cycle technology to give extra-durable cycle performance. HTG series battery with 20 years floating design life at 25°C.

### Applications

- Solar and wind power systems
- Communication systems
- Uninterruptible power supplies
- Golf carts and buggies
- Alarm and security system
- Electric toy and wheelchairs, etc

### General Features

- 20 years designed floating life(25 °C)
- Non-spillable construction
- Sealed and maintenance-free
- Excellent recovery from deep discharge
- High density active materials plates
- Longer Life and low self-discharge

### Standards

- Compliance with IEC, BS, JIS and EU standards.
- UL, CE Certified
- ISO45001,ISO9001 and ISO14001 certified production facilities

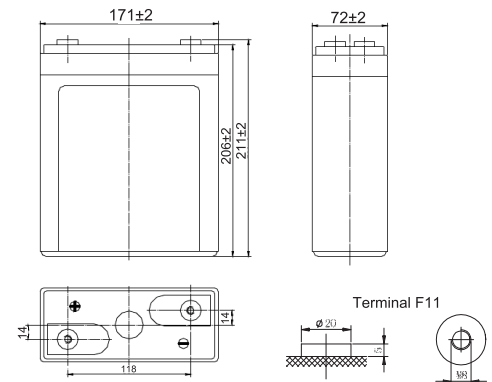
### Specifications

Rated Voltage	2V	
Nominal Capacity	100Ah	(C <sub>10</sub> ,1.8V)
Approx Weight	5.6kg±3%(12.35lbs)	
Terminal	F11	
Rated Capacity(25°C)	100 Ah	(10hr,10A,1.80V)
	88 Ah	(5hr,17.6A,1.75V)
	77.4 Ah	(3hr,25.8A,1.70V)
	65 Ah	(1hr,65A,1.60V)
Max.Discharge Current	500A(5s)	
Max.Charge Current	25A	
Internal Resistance(25°C)	Approx 1.5mΩ	
Operating Temp.Range	Discharge	-20~60 °C(-4~140 °F)
	Charge	-10~50 °C(14~122 °F)
	Storage	-20~60 °C(-4~140 °F)
Nominal operating temperature	25±5 °C	
Charge Voltage	Cycle Use	Initial Charging Current less than 25A. Voltage 2.4V~2.5V at 25 °C(77 °F)Temp. Coefficient -30mV/°C
	Standby Use	Initial Charging Current less than 25A. Voltage 2.25V~2.3V at 25 °C(77 °F)Temp. Coefficient -20mV/°C
Temperature effects on capacity	40 °C (104 °F)	103%
	25 °C (77 °F)	100%
	0 °C (32 °F)	86%
	-15 °C (5 °F)	65%
Self Discharge(25°C)	Capacity after 3 months storage	91%
	Capacity after 6 months storage	82%
	Capacity after 12 months storage	65%



### Dimensions

unit:mm



Length	171±2mm (6.73 inches)
Width	72±2mm (2.83 inches)
Container Height	206±2mm (8.11 inches)
Total Height	211±2mm (8.31 inches)

### Battery Construction

Component	Positive plate	Negative plate	Container	Safety valve	Terminal	Separator	Electrolyte
Raw material	Lead dioxide	Lead	ABS(UL94-HB) or FR(UL94-V0)	Rubber	Copper	AGM	SiO <sub>2</sub> +H <sub>2</sub> SO <sub>4</sub>

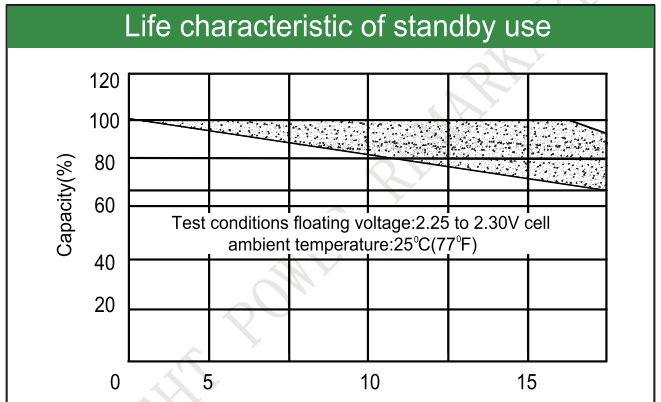
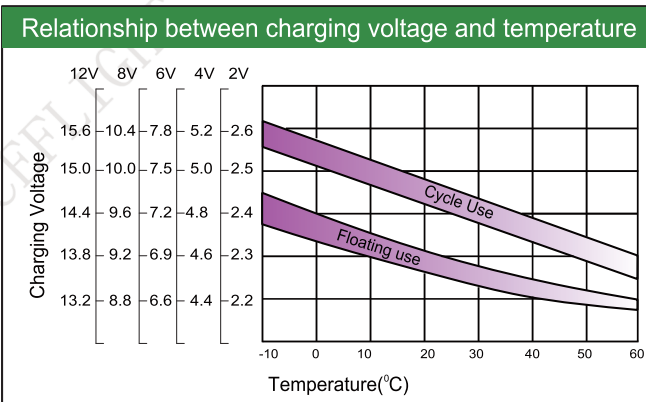
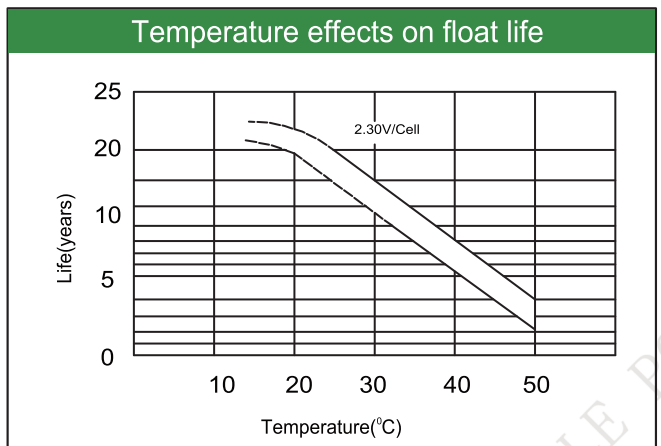
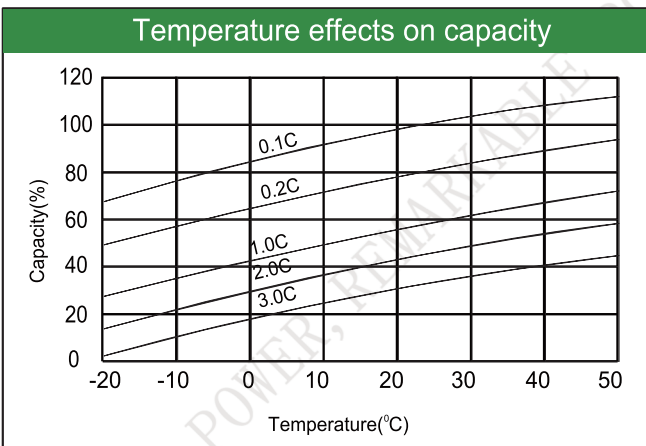
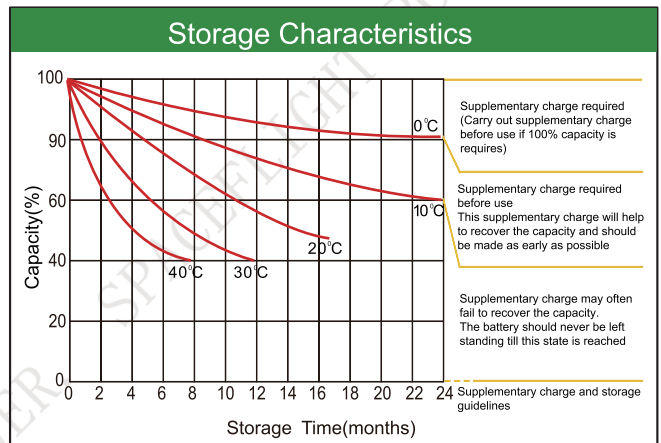
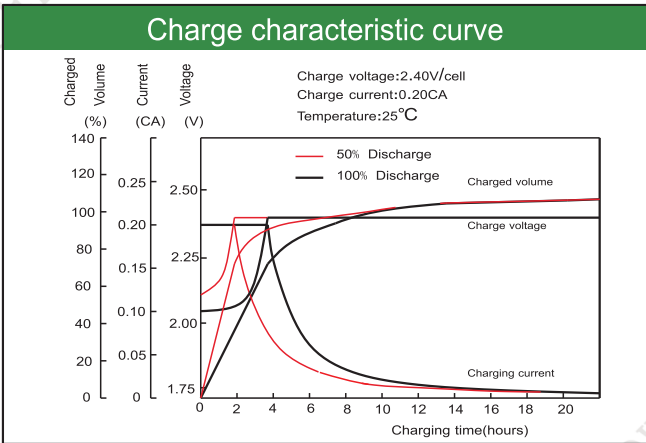
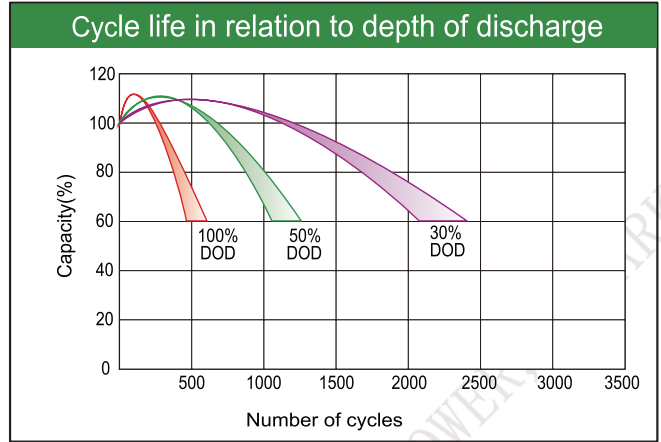
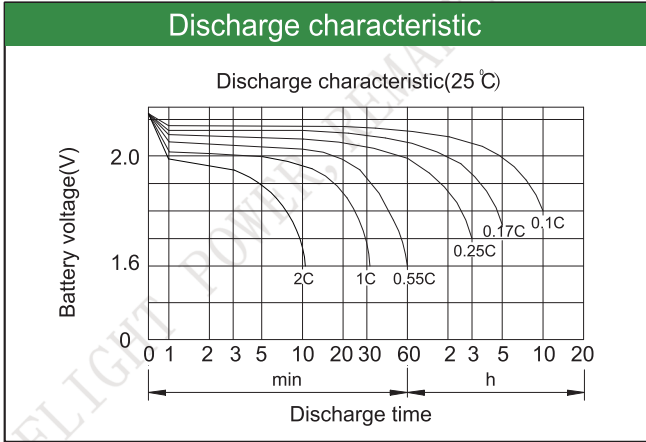
### Constant Current Discharge (Amperes) at 25°C(77°F)

E.V/Time	5min	10min	15min	30min	45min	1h	3h	5h	10h
1.60V	/	230	175	98.0	81.0	65.0	27.5	19.3	10.8
1.65V	/	218	167	94.0	78.0	62.5	26.5	18.8	10.6
1.70V	/	206	159	90.0	74.0	60.0	25.8	18.2	10.4
1.75V	/	193	150	85.0	71.0	57.0	24.7	17.6	10.2
1.80V	/	180	140	80.5	67.0	54.0	23.6	17.1	10.0

### Constant Power Discharge (Watts/cell) at 25°C(77°F)

E.V/Time	5min	10min	15min	30min	45min	1h	2h	3h	5h
1.60V	/	434	326	191	147	122	73.0	53.5	39.3
1.65V	/	410	307	187	140	117	71.0	52.2	38.6
1.70V	/	388	292	177	133	112	69.0	50.8	37.8
1.75V	/	364	279	165	126	105	66.0	49.2	37.0
1.80V	/	338	262	156	119	100	63.0	47.6	36.1

Note: The above characteristics data are average values obtained Within three charge/discharge cycles not the minimum.



Factory address: Fukang Industrial Zone, Longnan, Ganzhou, Jiangxi Province, China.  
 Shenzhen Office: RM208-210, Building D, Tongju industrial Park, No.4, Longping West Road, Longgang District, Shenzhen.  
 TEL: +86-755-28288189      [sales@sfbattery.com](mailto:sales@sfbattery.com)      [www.sfbattery.com](http://www.sfbattery.com)