

### HTG Series Battery

SPACEFLIGHT HTG Series Battery is hybrid GEL battery designed with deep cycle technology to give extra-durable cycle performance. HTG series battery with 20 years floating design life at 25°C.

#### Applications

- Solar and wind power systems
- Communication systems
- Uninterruptible power supplies
- Golf carts and buggies
- Alarm and security system
- Electric toy and wheelchairs, etc

#### General Features

- 20 years designed floating life(25 °C)
- Non-spillable construction
- Sealed and maintenance-free
- Excellent recovery from deep discharge
- High density active materials plates
- Longer Life and low self-discharge

#### Standards

- Compliance with IEC, BS, JIS and EU standards.
- UL, CE Certified
- ISO45001,ISO9001 and ISO14001 certified production facilities

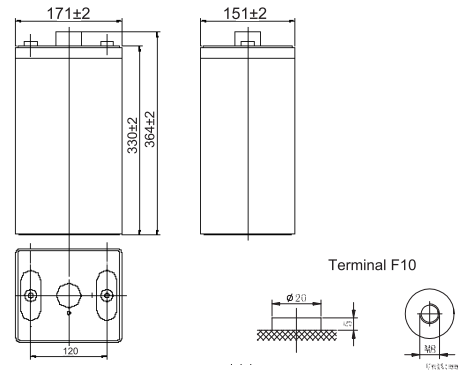
#### Specifications

|                                 |                                  |  |
|---------------------------------|----------------------------------|--|
| Rated Voltage                   | 2V                               |  |
| Nominal Capacity                | 300Ah                            | (C <sub>10</sub> , 1.8V)   |
| Approx Weight                   | 18.5kg±3%(40.8lbs)               |  |
| Terminal                        | F10                              |  |
| Rated Capacity(25°C)            | 300 Ah                           | (10hr,30A,1.80V)   |
|                                 | 270 Ah                           | (5hr,54A,1.75V)  |
|                                 | 249 Ah                           | (3hr,83A,1.70V)  |
|                                 | 190 Ah                           | (1hr,190A,1.60V)   |
| Max.Discharge Current           | 1500A(5s)                        |  |
| Max.Charge Current              | 75A                              |  |
| Internal Resistance(25°C)       | Approx 0.8mΩ                     |  |
| Operating Temp.Range            | Discharge                        | -20~60 °C(-4~140 °F)   |
|                                 | Charge                           | -10~50 °C(14~122 °F)   |
|                                 | Storage                          | -20~60 °C(-4~140 °F)   |
| Nominal operating temperature   | 25±5 °C                          |  |
| Charge Voltage @25°C(77 °F)     | Cycle Use                        | Initial Charging Current less than 75A. Voltage 2.4V~2.5V at 25°C(77°F)Temp. Coefficient -30mV/°C  |
|                                 | Standby Use                      | Initial Charging Current less than 75A. Voltage 2.25V~2.3V at 25°C(77°F)Temp. Coefficient -20mV/°C |
| Temperature effects on capacity | 40 °C (104 °F)                   | 103%   |
|                                 | 25 °C (77 °F)                    | 100%   |
|                                 | 0 °C (32 °F)                     | 86%  |
|                                 | -15 °C (5 °F)                    | 65%  |
| Self Discharge(25°C)            | Capacity after 3 months storage  | 91%  |
|                                 | Capacity after 6 months storage  | 82%  |
|                                 | Capacity after 12 months storage | 65%  |



#### Dimensions

unit:mm



|                  |                       |
|------------------|-----------------------|
| Length           | 171±2mm (6.73 inches) |
| Width            | 151±2mm (5.94 inches) |
| Container Height | 330±2mm (13.0 inches) |
| Total Height     | 364±2mm (14.3 inches) |

#### Battery Construction

| Component    | Positive plate | Negative plate | Container                   | Safety valve | Terminal | Separator | Electrolyte                                      |
|--------------|----------------|----------------|-----------------------------|--------------|----------|-----------|--|
| Raw material | Lead dioxide   | Lead           | ABS(UL94-HB) or FR(UL94-V0) | Rubber       | Copper   | AGM       | SiO <sub>2</sub> +H <sub>2</sub> SO <sub>4</sub> |

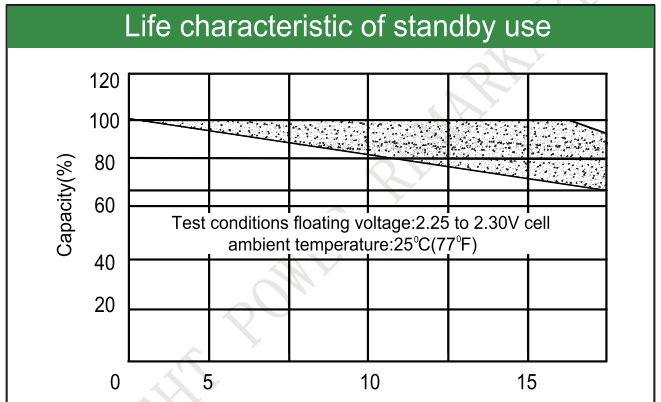
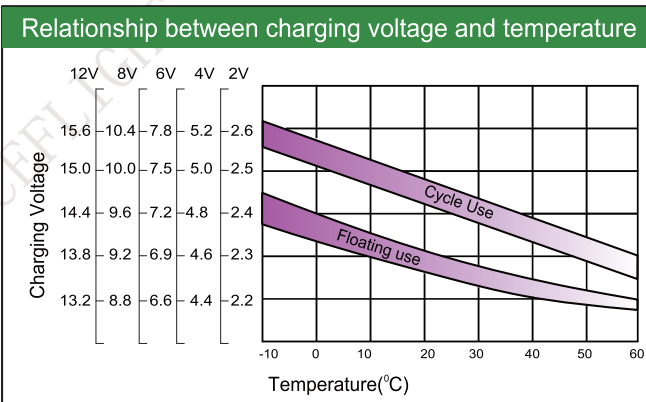
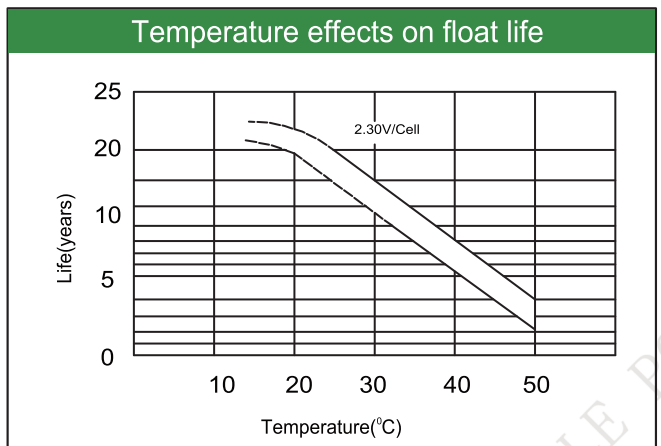
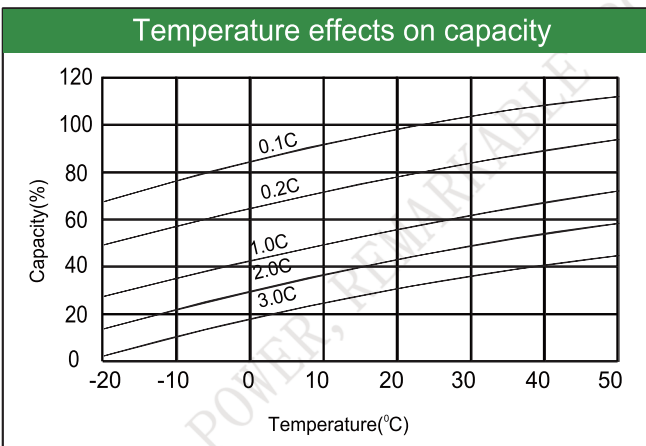
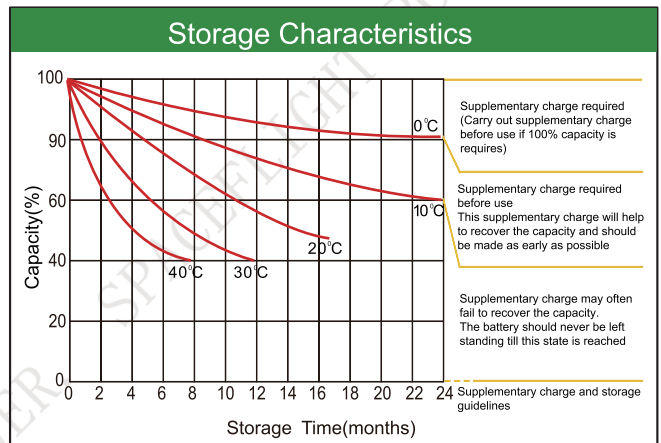
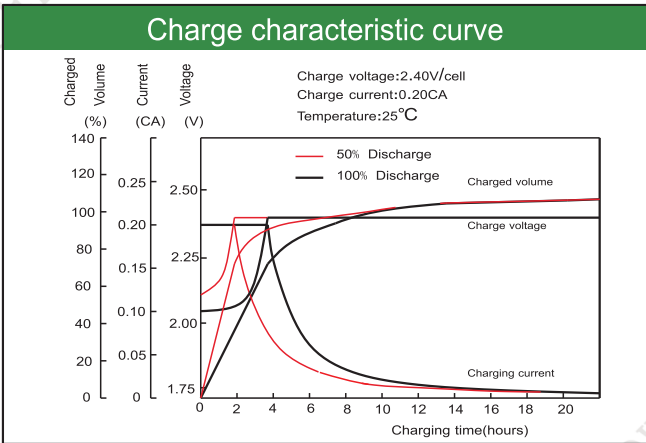
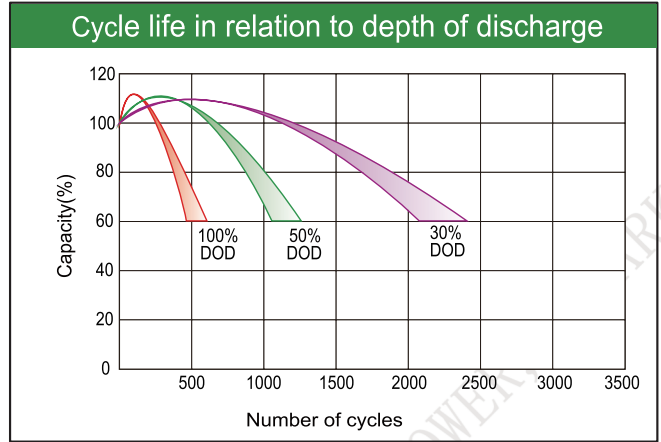
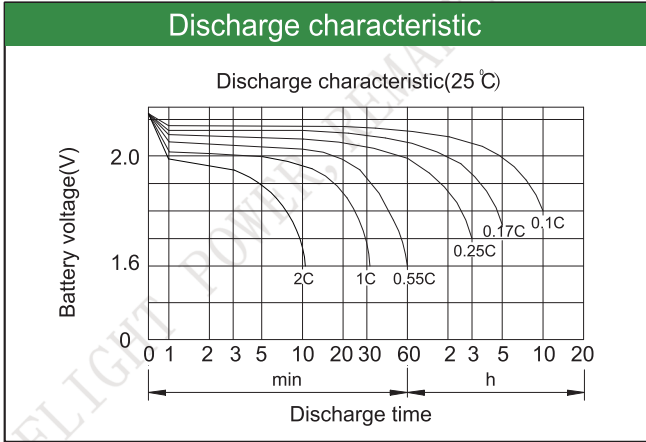
#### Constant Current Discharge (Amperes) at 25°C(77°F)

| E.V/Time | 5min | 10min | 15min | 30min | 45min | 1h  | 3h   | 5h   | 10h  |
|----------|------|-------|-------|-------|-------|-----|------|------|------|
| 1.60V    | /    | 575   | 442   | 308   | 240   | 190 | 89.0 | 58.3 | 32.1 |
| 1.65V    | /    | 547   | 422   | 294   | 230   | 184 | 86.5 | 57.1 | 31.8 |
| 1.70V    | /    | 519   | 405   | 280   | 220   | 178 | 83.0 | 55.6 | 31.3 |
| 1.75V    | /    | 491   | 386   | 265   | 208   | 171 | 80.0 | 54.0 | 30.7 |
| 1.80V    | /    | 456   | 367   | 250   | 198   | 163 | 76.0 | 52.0 | 30.0 |

#### Constant Power Discharge (Watts/cell) at 25°C(77°F)

| E.V/Time | 5min | 10min | 15min | 30min | 45min | 1h  | 2h  | 3h  | 5h  |
|----------|------|-------|-------|-------|-------|-----|-----|-----|-----|
| 1.60V    | /    | 1005  | 793   | 562   | 453   | 371 | 247 | 175 | 115 |
| 1.65V    | /    | 958   | 763   | 534   | 432   | 357 | 241 | 171 | 113 |
| 1.70V    | /    | 911   | 733   | 505   | 410   | 342 | 234 | 166 | 111 |
| 1.75V    | /    | 864   | 703   | 476   | 388   | 328 | 228 | 162 | 108 |
| 1.80V    | /    | 847   | 684   | 460   | 366   | 316 | 221 | 157 | 105 |

Note: The above characteristics data are average values obtained Within three charge/discharge cycles not the minimum.



Factory address: Fukang Industrial Zone, Longnan, Ganzhou, Jiangxi Province, China.  
 Shenzhen Office: RM208-210, Building D, Tongju industrial Park, No.4, Longping West Road, Longgang District, Shenzhen.  
 TEL: +86-755-28288189      [sales@sfbattery.com](mailto:sales@sfbattery.com)      [www.sfbattery.com](http://www.sfbattery.com)