

### HTG Series Battery

SPACEFLIGHT HTG Series Battery is hybrid GEL battery designed with deep cycle technology to give extra-durable cycle performance. HTG series battery with 20 years floating design life at 25°C.

#### Applications

- Solar and wind power systems
- Communication systems
- Uninterruptible power supplies
- Golf carts and buggies
- Alarm and security system
- Electric toy and wheelchairs, etc

#### General Features

- 20 years designed floating life(25 °C)
- Non-spillable construction
- Sealed and maintenance-free
- Excellent recovery from deep discharge
- High density active materials plates
- Longer Life and low self-discharge

#### Standards

- Compliance with IEC, BS, JIS and EU standards.
- UL, CE Certified
- ISO45001,ISO9001 and ISO14001 certified production facilities

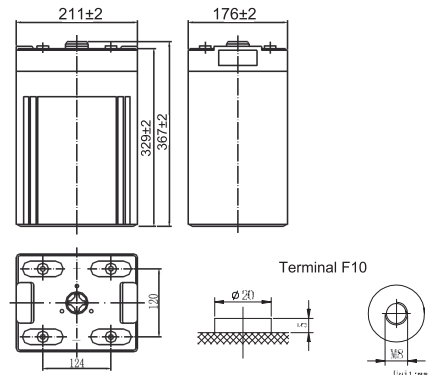
#### Specifications

Rated Voltage	2V	
Nominal Capacity	400Ah	(C <sub>10</sub> , 1.8V)
Approx Weight	25.5kg±3%(56.2lbs)	
Terminal	F10	
Rated Capacity(25°C)	400 Ah	(10hr,40A,1.80V)
	350 Ah	(5hr,70A,1.75V)
	318 Ah	(3hr,106A,1.70V)
	245 Ah	(1hr,245A,1.60V)
Max.Discharge Current	2000A(5s)	
Max.Charge Current	100A	
Internal Resistance(25°C)	Approx 0.75mΩ	
Operating Temp.Range	Discharge	-20~60 °C(-4~140 °F)
	Charge	-10~50 °C(14~122 °F)
	Storage	-20~60 °C(-4~140 °F)
Nominal operating temperature	25±5 °C	
Charge Voltage @25°C(77 °F)	Cycle Use	Initial Charging Current less than 100A. Voltage 2.4V~2.5V at 25°C(77°F)Temp. Coefficient -30mV/°C
	Standby Use	Initial Charging Current less than 100A. Voltage 2.25V~2.3V at 25°C(77°F)Temp. Coefficient -20mV/°C
Temperature effects on capacity	40 °C (104 °F)	103%
	25 °C (77 °F)	100%
	0 °C (32 °F)	86%
	-15 °C (5 °F)	65%
Self Discharge(25°C)	Capacity after 3 months storage	91%
	Capacity after 6 months storage	82%
	Capacity after 12 months storage	65%



#### Dimensions

unit:mm



Length	210±2mm (8.27 inches)
Width	176±2mm (6.93 inches)
Container Height	330±2mm (13.0 inches)
Total Height	367±2mm (14.5 inches)

#### Battery Construction

Component	Positive plate	Negative plate	Container	Safety valve	Terminal	Separator	Electrolyte
Raw material	Lead dioxide	Lead	ABS(UL94-HB) or FR(UL94-V0)	Rubber	Copper	AGM	SiO <sub>2</sub> +H <sub>2</sub> SO <sub>4</sub>

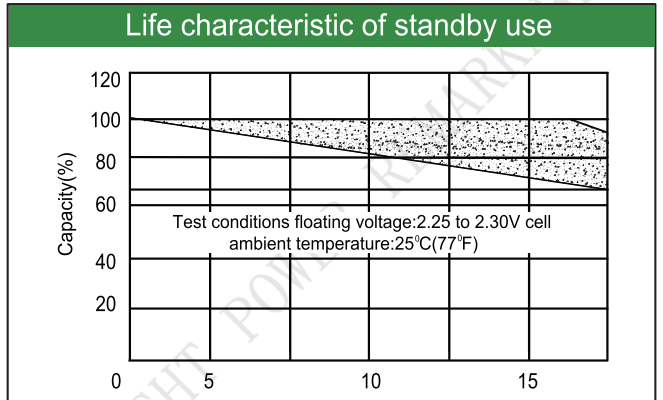
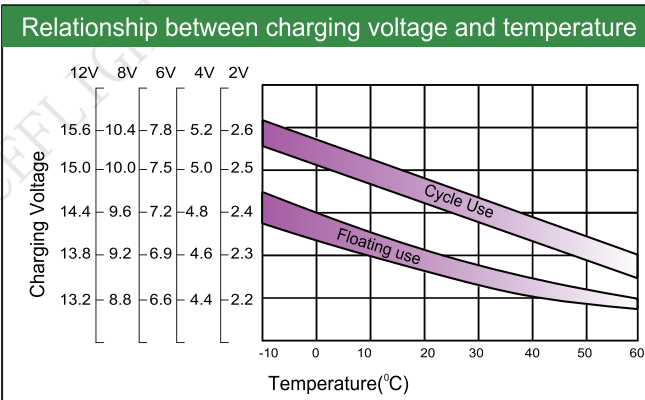
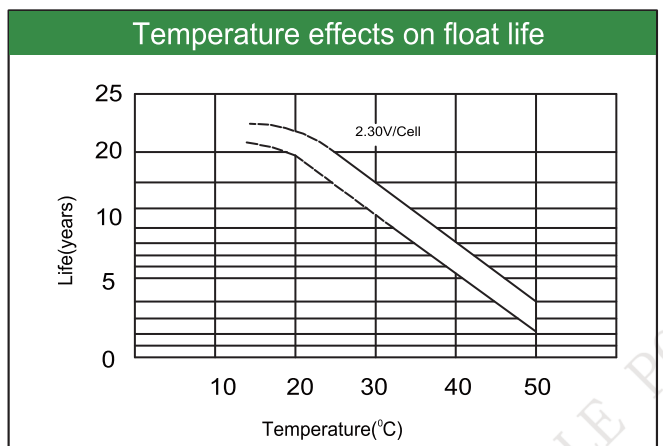
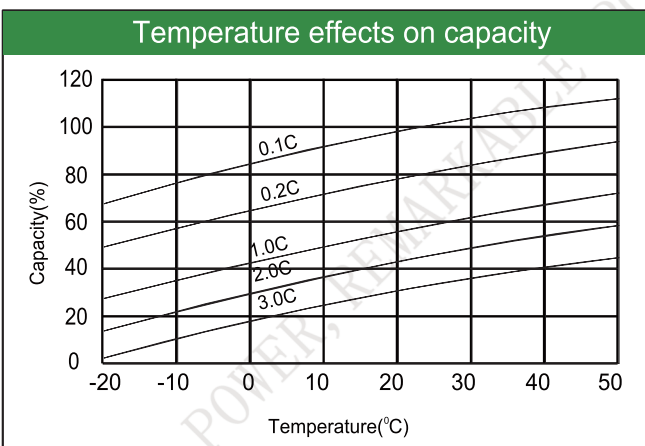
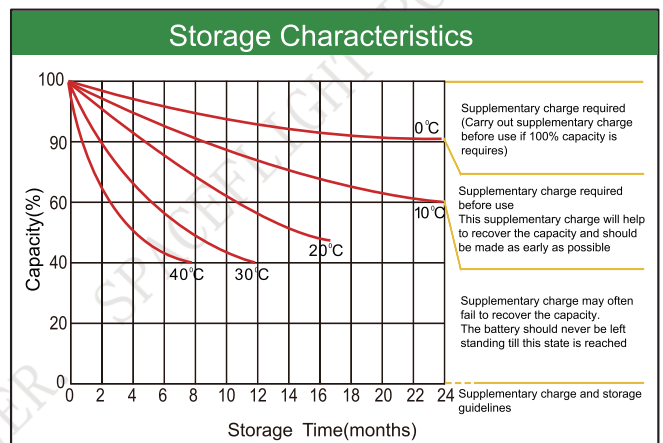
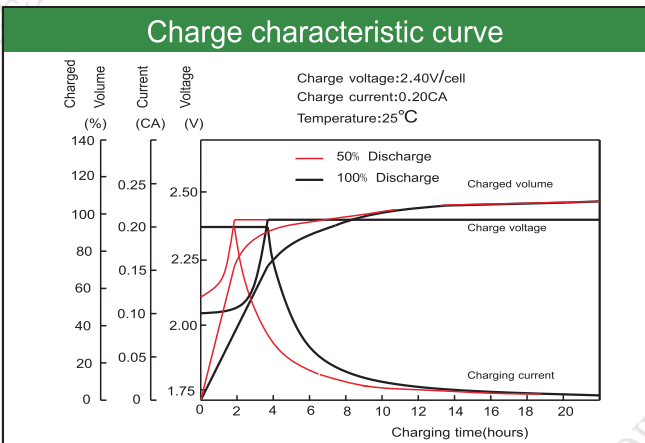
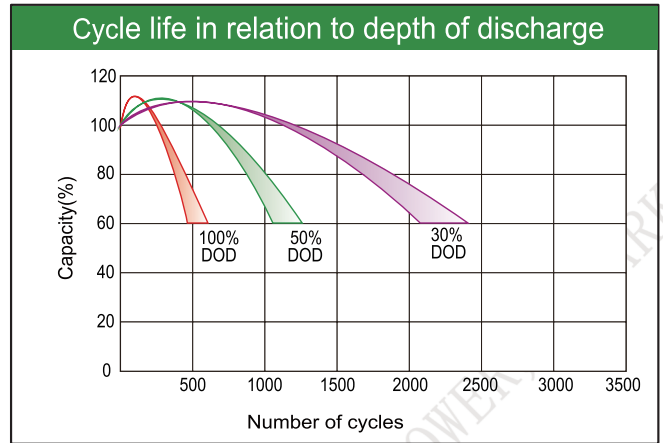
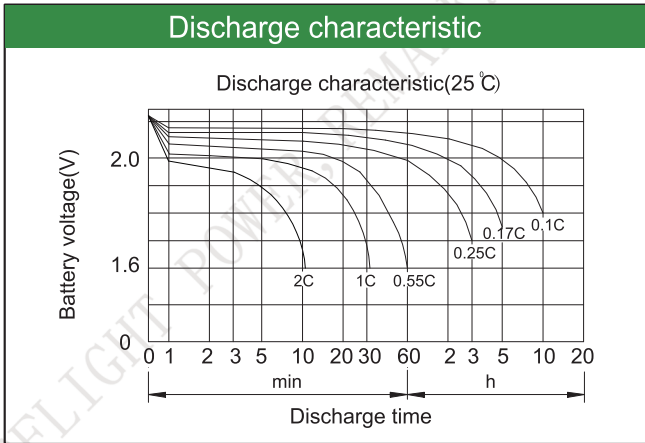
#### Constant Current Discharge (Amperes) at 25°C(77°F)

E.V/Time	5min	10min	15min	30min	45min	1h	3h	5h	10h
1.60V	/	766	589	411	319	245	114	75.5	43.0
1.65V	/	729	563	392	307	236	110	73.8	42.4
1.70V	/	691	540	373	293	227	106	71.8	41.7
1.75V	/	654	514	353	277	217	102	70.0	40.9
1.80V	/	607	489	333	263	206	98	67.0	40.0

#### Constant Power Discharge (Watts/cell) at 25°C(77°F)

E.V/Time	5min	10min	15min	30min	45min	1h	2h	3h	5h
1.60V	/	1340	1057	749	603	465	311	215	140
1.65V	/	1277	1017	711	576	442	288	210	138
1.70V	/	1214	977	673	547	427	272	204	135
1.75V	/	1151	937	634	517	405	262	198	132
1.80V	/	1129	911	613	487	392	246	188	125

Note: The above characteristics data are average values obtained Within three charge/discharge cycles not the minimum.



Factory address: Fukang Industrial Zone, Longnan, Ganzhou, Jiangxi Province, China.  
 Shenzhen Office: RM208-210, Building D, Tongju industrial Park, No.4, Longping West Road, Longgang District, Shenzhen.  
 TEL: +86-755-28288189      [sales@sfbattery.com](mailto:sales@sfbattery.com)      [www.sfbattery.com](http://www.sfbattery.com)