

### HTG Series Battery

SPACEFLIGHT HTG Series Battery is hybrid GEL battery designed with deep cycle technology to give extra-durable cycle performance. HTG series battery with 20 years floating design life at 25°C.

#### Applications

- Solar and wind power systems
- Communication systems
- Uninterruptible power supplies
- Golf carts and buggies
- Alarm and security system
- Electric toy and wheelchairs, etc

#### General Features

- 20 years designed floating life(25 °C)
- Non-spillable construction
- Sealed and maintenance-free
- Excellent recovery from deep discharge
- High density active materials plates
- Longer Life and low self-discharge

#### Standards

- Compliance with IEC, BS, JIS and EU standards.
- UL, CE Certified
- ISO45001,ISO9001 and ISO14001 certified production facilities

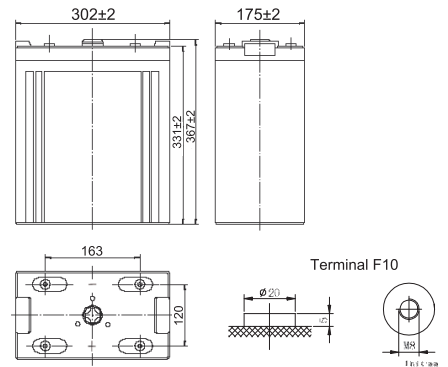
#### Specifications

Rated Voltage	2V	
Nominal Capacity	600Ah	(C <sub>10</sub> ,1.8V)
Approx Weight	37kg±3%(81.5lbs)	
Terminal	F10	
Rated Capacity(25°C)	600 Ah	(10hr,60A,1.80V)
	530 Ah	(5hr,106A,1.75V)
	510 Ah	(3hr,170A,1.70V)
	364 Ah	(1hr,364A,1.60V)
Max.Discharge Current	3000A(5s)	
Max.Charge Current	150A	
Internal Resistance(25°C)	Approx 0.65mΩ	
Operating Temp.Range	Discharge	-20~60 °C(-4~140 °F)
	Charge	-10~50 °C(14~122 °F)
	Storage	-20~60 °C(-4~140 °F)
Nominal operating temperature	25±5 °C	
Charge Voltage @25°C(77 °F)	Cycle Use	Initial Charging Current less than 150A. Voltage 2.4V~2.5V at 25°C(77°F)Temp. Coefficient -30mV/°C
	Standby Use	Initial Charging Current less than 150A. Voltage 2.25V~2.3V at 25°C(77°F)Temp. Coefficient -20mV/°C
Temperature effects on capacity	40 °C (104 °F)	103%
	25 °C (77 °F)	100%
	0 °C (32 °F)	86%
	-15 °C (5 °F)	65%
Self Discharge(25°C)	Capacity after 3 months storage	91%
	Capacity after 6 months storage	82%
	Capacity after 12 months storage	65%



#### Dimensions

unit:mm



Length	302±2mm (11.9 inches)
Width	175±2mm (6.89 inches)
Container Height	330±2mm (13.0 inches)
Total Height	367±2mm (14.45 inches)

#### Battery Construction

Component	Positive plate	Negative plate	Container	Safety valve	Terminal	Separator	Electrolyte
Raw material	Lead dioxide	Lead	ABS(UL94-HB) or FR(UL94-V0)	Rubber	Copper	AGM	SiO <sub>2</sub> +H <sub>2</sub> SO <sub>4</sub>

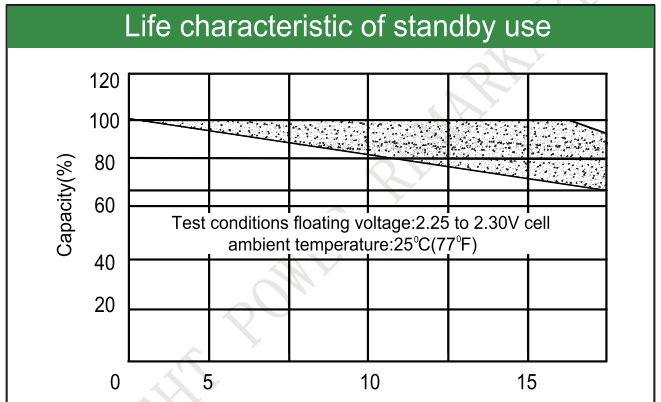
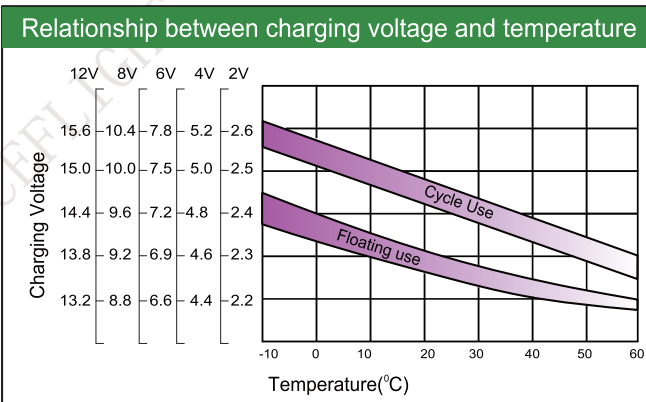
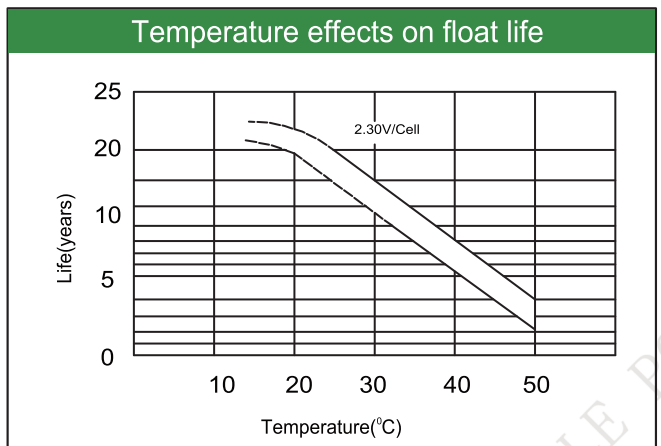
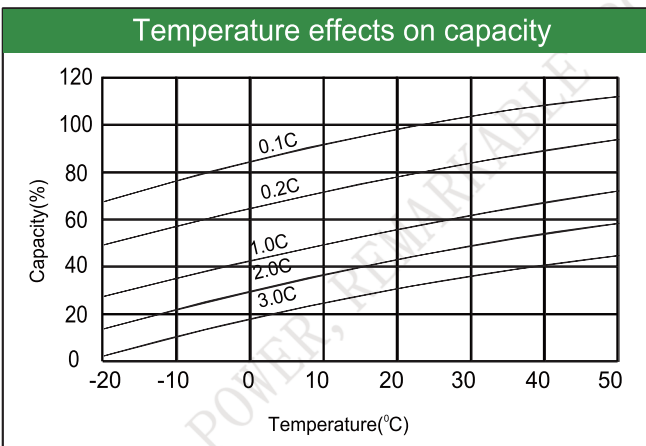
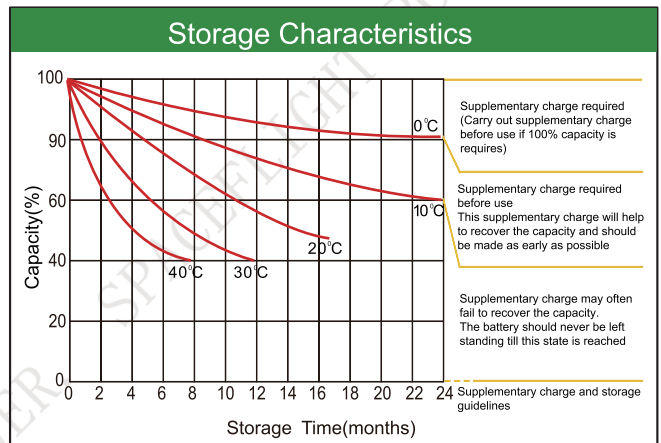
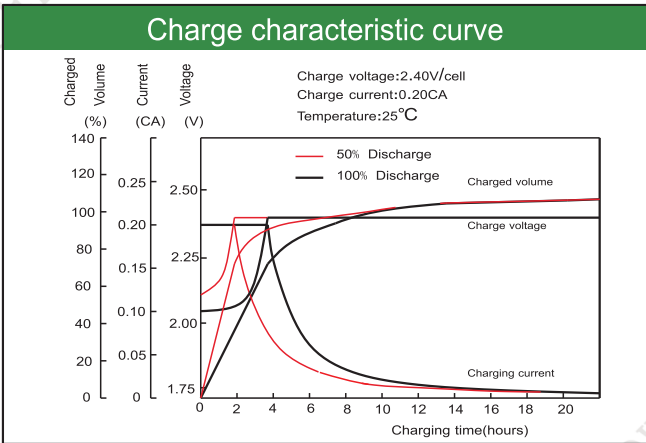
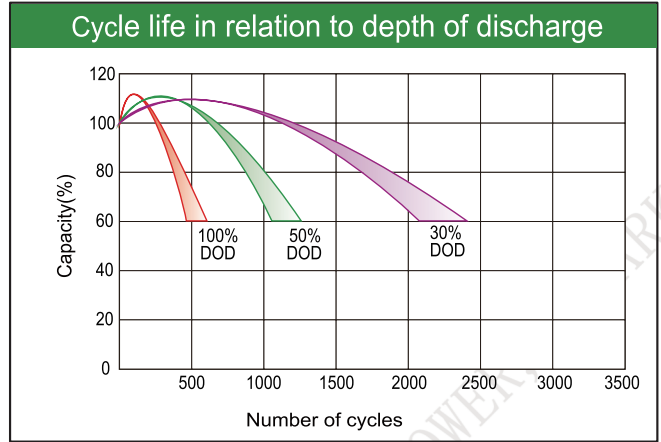
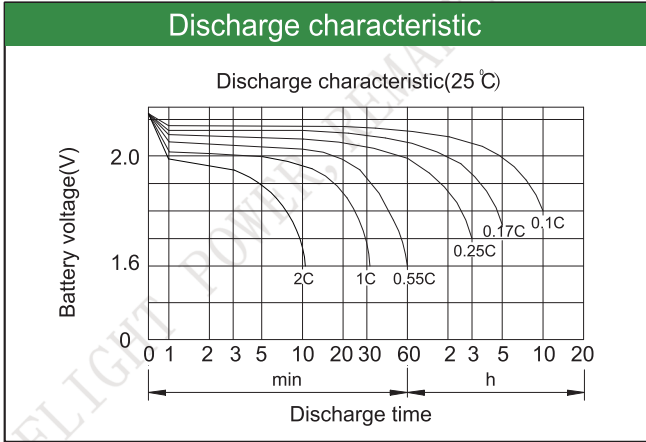
#### Constant Current Discharge (Amperes) at 25°C(77°F)

E.V/Time	5min	10min	15min	30min	45min	1h	3h	5h	10h
1.60V	/	1149	883	616	479	364	180	113	64.0
1.65V	/	1093	844	588	460	351	175	111	63.2
1.70V	/	1037	810	560	440	337	170	109	62.0
1.75V	/	981	771	530	416	322	163	106	61.3
1.80V	/	911	733	500	395	307	156	103	60.0

#### Constant Power Discharge (Watts/cell) at 25°C(77°F)

E.V/Time	5min	10min	15min	30min	45min	1h	2h	3h	5h
1.60V	/	2010	1586	1123	905	710	483	358	225
1.65V	/	1916	1526	1067	864	680	472	349	222
1.70V	/	1821	1466	1009	820	649	460	340	218
1.75V	/	1727	1406	951	776	617	446	330	214
1.80V	/	1663	1367	920	731	583	418	309	206

Note: The above characteristics data are average values obtained Within three charge/discharge cycles not the minimum.



Factory address: Fukang Industrial Zone, Longnan, Ganzhou, Jiangxi Province, China.  
 Shenzhen Office: RM208-210, Building D, Tongju industrial Park, No.4, Longping West Road, Longgang District, Shenzhen.  
 TEL: +86-755-28288189      [sales@sfbattery.com](mailto:sales@sfbattery.com)      [www.sfbattery.com](http://www.sfbattery.com)